

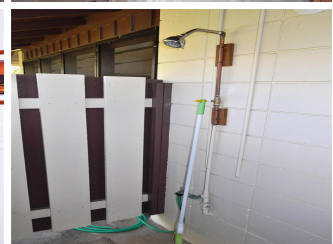
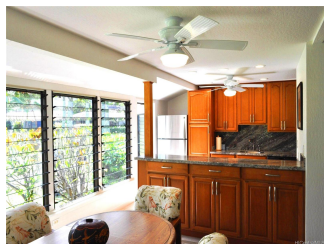
Mokuleia Beach Colony 68-615 Farrington Highway Unit 18B, Waialua 96791 * Mokuleia

Beach Colony * \$499,000

Sold Price: \$480,000	Sold Date: 06-13-2019	Sold Ratio: 96%
Beds: 1	MLS#: <u>201905316</u>, FS	Year Built: 1966
Bath: 1/0	Status: Sold	Remodeled: 2018
Living Sq. Ft.: 842	List Date & DOM: 02-27-2019 & 64	Total Parking: 1
Land Sq. Ft.: 5,116	Condition: Excellent	Assessed Value
Lanai Sq. Ft.: 0	Frontage: Ocean, Sandy Beach	Building: \$200,900
Sq. Ft. Other: 0	Tax/Year: \$98/2019	Land: \$353,500
Total Sq. Ft. 842	Neighborhood: Mokuleia	Total: \$554,400
Maint./Assoc. \$805 / \$0	Flood Zone : Zone AE - Tool	Stories / CPR: One / No
Parking: Assigned, Guest, Open - 1, Street	Frontage: Ocean, Sandy Beach	
Zoning : 05 - R-5 Residential District	View: Garden, Mountain	

Public Remarks: Meticulously renovated and maintained, by an engineer, owner occupant, this 1 bdr 1 bath, duplex cabana is located in one of the most unique properties in Hawaii. A PRIVATE, GATED, BEACH FRONT CONDOMINIUM OF 26 DUPLEX CABANAS ON OVER 6 ACRES, ON A RURAL NEIGHBORHOOD, ON OAHU'S WORLD FAMOUS NORTH SHORE. Manicured landscaped grounds, walking paths, heated salt water pool and tennis courts. This airy home enjoys morning sun, trade wind breezes and beautiful garden views. Steps to a dreamy, empty, sandy beach. It includes all appliances, ceiling fans and an open floor plan with spacious living room, dining room and kitchen. Great value, priced below tax assessment! **Sale**

Conditions: None **Schools:** [Waialua](#), [Waialua](#), [Waialua](#) * [Request Showing](#), [Photos](#), [History](#), [Maps](#), [Deed](#), [Watch List](#), [Tax Info](#)





Address	Price	Bd & Bth	Living / Avg.	Land Avg.	Lanai	Occ.	FL	DOM
68-615 Farrington Highway 18B	\$499,000	1 & 1/0	842 \$593	5,116 \$98	0	31%	1	64

Address	Tax Maint. Ass.	Assessed Land	Assessed Building	Assessed Total	Ratio	Year & Remodeled
68-615 Farrington Highway 18B	\$98 \$805 \$0	\$353,500	\$200,900	\$554,400	90%	1966 & 2018

Address	Sold Price	Sold Date	Sold Ratio	Original Ratio	Sold Terms
68-615 Farrington Highway 18B	\$480,000	06-13-2019	96%	96%	Conventional

<p>68-615 Farrington Highway 18B - MLS#: 201905316 - Meticulously renovated and maintained, by an engineer, owner occupant, this 1 bdr 1 bath, duplex cabana is located in one of the most unique properties in Hawaii. A PRIVATE, GATED, BEACH FRONT CONDOMINIUM OF 26 DUPLEX CABANAS ON OVER 6 ACRES, ON A RURAL NEIGHBORHOOD, ON OAHU'S WORLD FAMOUS NORTH SHORE. Manicured landscaped grounds, walking paths, heated salt water pool and tennis courts. This airy home enjoys morning sun, trade wind breezes and beautiful garden views. Steps to a dreamy, empty, sandy beach. It includes all appliances, ceiling fans and an open floor plan with spacious living room, dining room and kitchen. Great value, priced below tax assessment! Region: North Shore Neighborhood: Mokuleia Condition: Excellent Parking: Assigned, Guest, Open - 1, Street Total Parking: 1 View: Garden, Mountain Frontage: Ocean, Sandy Beach Pool: Zoning: 05 - R-5 Residential District Sale Conditions: None Schools: Waialua, Waialua, Waialua * Request Showing, Photos, History, Maps, Deed, Watch List, Tax Info</p>					
---	--	--	--	--	--

DOM = Days on Market, Occ. = Occupancy, FL = Floor Number