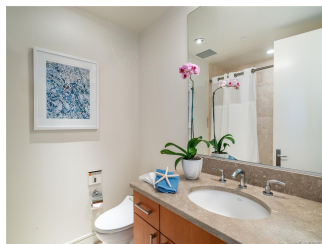
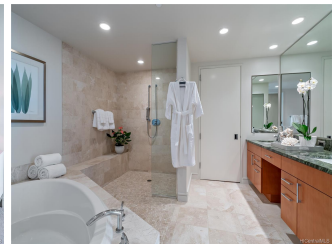
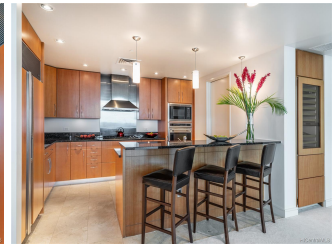
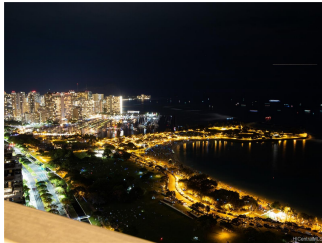


**Hokua at 1288 Ala Moana 1288 Ala Moana Boulevard Unit PH 39K, Honolulu 96814 \* Hokua  
at 1288 Ala Moana \* \$5,800,000 \* Originally \$5,985,000**

Beds: <b>3</b>	MLS#: <b><a href="#">201907579</a>, FS</b>	Year Built: <b>2006</b>
Bath: <b>3/1</b>	Status: <b>Expired</b>	Remodeled:
Living Sq. Ft.: <b>2,574</b>	List Date & DOM: <b>03-16-2019 &amp; 365</b>	Total Parking: <b>3</b>
Land Sq. Ft.: <b>0</b>	Condition: <b>Excellent</b>	<a href="#">Assessed Value</a>
Lanai Sq. Ft.: <b>38</b>	Frontage: <b>Other</b>	Building: <b>\$4,720,500</b>
Sq. Ft. Other: <b>0</b>	Tax/Year: <b>\$3,785/2019</b>	Land: <b>\$176,800</b>
Total Sq. Ft. <b>2,612</b>	Neighborhood: <b>Kakaako</b>	Total: <b>\$4,897,300</b>
Maint./Assoc. <b>\$2,433 / \$0</b>	<a href="#">Flood Zone</a> : <b>Zone AE - Tool</b>	Stories / CPR: <b>21+ / No</b>
Parking: <b>Assigned, Covered - 3+, Garage, Guest, Secured Entry</b>	Frontage: <b>Other</b>	
<a href="#">Zoning</a> : <b>Kak - Kakaako Community Development Project</b>	View: <b>City, Coastline, Diamond Head, Marina/Canal, Mountain, Ocean, Sunrise, Sunset</b>	

**Public Remarks:** Breathtaking and unobstructed views of ocean, Diamond Head, and Ala Moana Beach Park from every room. This Penthouse 39K is Sitting just below the top floor and cooler side of building facing the Diamond Head side ocean. Each of the bedroom comes with full ensuite bathroom and the master bedroom has two super large walk-in closets. This unit also comes with three generous size side-by-side parking stalls and a large walk-in storage near elevator. Hokua is an ultra-luxury condo in Honolulu conveniently located right by the Ala Moana shopping center, restaurants, shops and beaches. **Sale Conditions:** None **Schools:** [Kaahumanu](#), [Washington](#), [Mckinley](#) \* [Request Showing](#), [Photos](#), [History](#), [Maps](#), [Deed](#), [Watch List](#), [Tax Info](#)





Address	Price	Bd & Bth	Living / Avg.	Land   Avg.	Lanai	Occ.	FL	DOM
<a href="#">1288 Ala Moana Boulevard PH 39K</a>	<b>\$5,800,000</b>	3 & 3/1	2,574   \$2,253	0   \$inf	38	85%	39	365

Address	Tax   Maint.   Ass.	Assessed Land	Assessed Building	Assessed Total	Ratio	Year & Remodeled
<a href="#">1288 Ala Moana Boulevard PH 39K</a>	\$3,785   \$2,433   \$0	\$176,800	\$4,720,500	\$4,897,300	118%	2006 & NA

[1288 Ala Moana Boulevard PH 39K](#) - MLS#: [201907579](#) - Original price was \$5,985,000 - Breathtaking and unobstructed views of ocean, Diamond Head, and Ala Moana Beach Park from every room. This Penthouse 39K is Sitting just below the top floor and cooler side of building facing the Diamond Head side ocean. Each of the bedroom comes with full ensuite bathroom and the master bedroom has two super large walk-in closets. This unit also comes with three generous size side-by-side parking stalls and a large walk-in storage near elevator. Hokua is an ultra-luxury condo in Honolulu conveniently located right by the Ala Moana shopping center, restaurants, shops and beaches. **Region:** Metro **Neighborhood:** Kakaako **Condition:** Excellent **Parking:** Assigned, Covered - 3+, Garage, Guest, Secured Entry **Total Parking:** 3 **View:** City, Coastline, Diamond Head, Marina/Canal, Mountain, Ocean, Sunrise, Sunset **Frontage:** Other **Pool:** **Zoning:** Kak - Kakaako Community Development Project **Sale Conditions:** None **Schools:** [Kaahumanu](#), [Washington](#), [Mckinley](#) \* [Request Showing](#), [Photos](#), [History](#), [Maps](#), [Deed](#), [Watch List](#), [Tax Info](#)

DOM = Days on Market, Occ. = Occupancy, FL = Floor Number