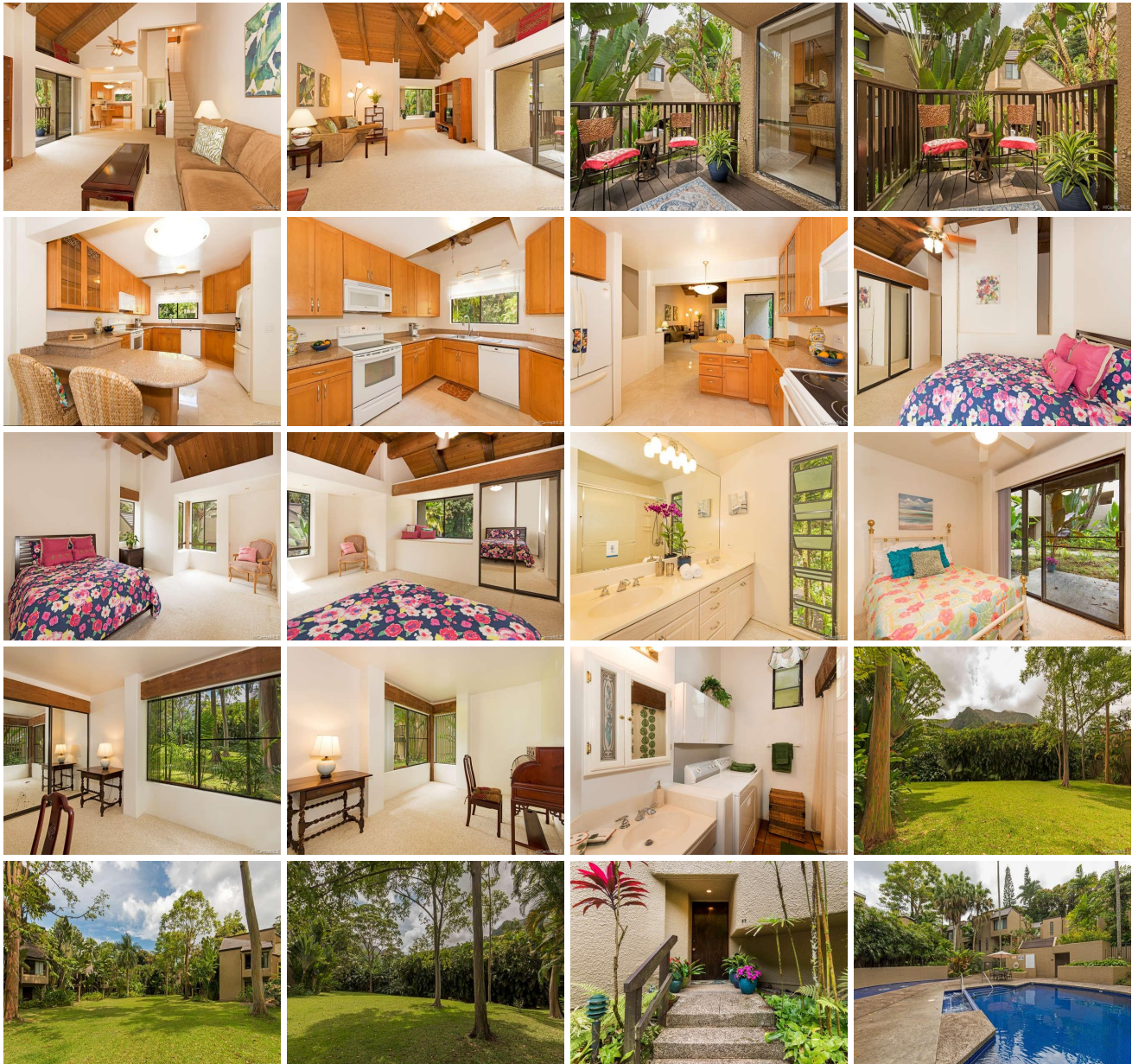


Eden at Haiku Woods A 46-369 Haiku Road Unit F9, Kaneohe 96744 * Eden at Haiku Woods

A * \$582,000 * Originally \$611,000

Sold Price: \$580,000	Sold Date: 10-03-2019	Sold Ratio: 100%
Beds: 3	MLS#: <u>201908762</u>, FS	Year Built: 1976
Bath: 2/0	Status: Sold	Remodeled: 2012
Living Sq. Ft.: 1,452	List Date & DOM: 04-01-2019 & 153	Total Parking: 2
Land Sq. Ft.: 345,605	Condition: Above Average	Assessed Value
Lanai Sq. Ft.: 120	Frontage:	Building: \$365,600
Sq. Ft. Other: 0	Tax/Year: \$139/2019	Land: \$239,200
Total Sq. Ft. 1,572	Neighborhood: Haiku Plantation	Total: \$604,800
Maint./Assoc. \$1,055 / \$0	Flood Zone : Zone D - Tool	Stories / CPR: Three / No
Parking: Assigned, Covered - 2, Guest	Frontage:	
Zoning : 05 - R-5 Residential District	View: Garden, Mountain	

Public Remarks: GREAT PRICE! \$68k less than last sold 3 bedroom! 1 PORTABLE AC unit INCLUDED. Spacious, END unit, 2 COVERED parking side x side plus a guest parking in front of this unit. High ceilings with gorgeous views of the Rainbow Eucalyptus trees & green Ko'olau mountains. Kitchen remodeled & expanded with built in breakfast bar. Large practical INDOOR STORAGE ROOM with many possibilities. Master bedroom, walk in closet & ensuite bathroom with double sinks and walk in shower. A pool, hot tub, wading pool, sauna & amazing greenery are highlights of this convenient, well maintained complex with NEW ROOFS & EXTERIOR PAINT. Easy access to the Windward Mall, Likelike, Pali, H-3, Kaneohe Marine Base & District Park with Haleiwa Joe's right across the street! Pet Friendly too so bring your fur babies! **Sale Conditions:** None
Schools: , , * [Request Showing](#), [Photos](#), [History](#), [Maps](#), [Deed](#), [Watch List](#), [Tax Info](#)





Address	Price	Bd & Bth	Living / Avg.	Land Avg.	Lanai	Occ.	FL	DOM
46-369 Haiku Road F9	\$582,000	3 & 2/0	1,452 \$401	345,605 \$2	120	80%	1	153

Address	Tax Maint. Ass.	Assessed Land	Assessed Building	Assessed Total	Ratio	Year & Remodeled
46-369 Haiku Road F9	\$139 \$1,055 \$0	\$239,200	\$365,600	\$604,800	96%	1976 & 2012

Address	Sold Price	Sold Date	Sold Ratio	Original Ratio	Sold Terms
46-369 Haiku Road F9	\$580,000	10-03-2019	100%	95%	VA

[46-369 Haiku Road F9](#) - MLS#: [201908762](#) - Original price was \$611,000 - GREAT PRICE! \$68k less than last sold 3 bedroom! 1 PORTABLE AC unit INCLUDED. Spacious, END unit, 2 COVERED parking side x side plus a guest parking in front of this unit. High ceilings with gorgeous views of the Rainbow Eucalyptus trees & green Ko'olau mountains. Kitchen remodeled & expanded with built in breakfast bar. Large practical INDOOR STORAGE ROOM with many possibilities. Master bedroom, walk in closet & ensuite bathroom with double sinks and walk in shower. A pool, hot tub, wading pool, sauna & amazing greenery are highlights of this convenient, well maintained complex with NEW ROOFS & EXTERIOR PAINT. Easy access to the Windward Mall, Likelike, Pali, H-3, Kaneohe Marine Base & District Park with Haleiwa Joe's right across the street! Pet Friendly too so bring your fur babies! **Region:** Kaneohe **Neighborhood:** Haiku Plantation **Condition:** Above Average **Parking:** Assigned, Covered - 2, Guest **Total Parking:** 2 **View:** Garden, Mountain **Frontage:** Pool: **Zoning:** 05 - R-5 Residential District **Sale Conditions:** None **Schools:** , , * [Request Showing](#), [Photos](#), [History](#), [Maps](#), [Deed](#), [Watch List](#), [Tax Info](#)

DOM = Days on Market, Occ. = Occupancy, FL = Floor Number