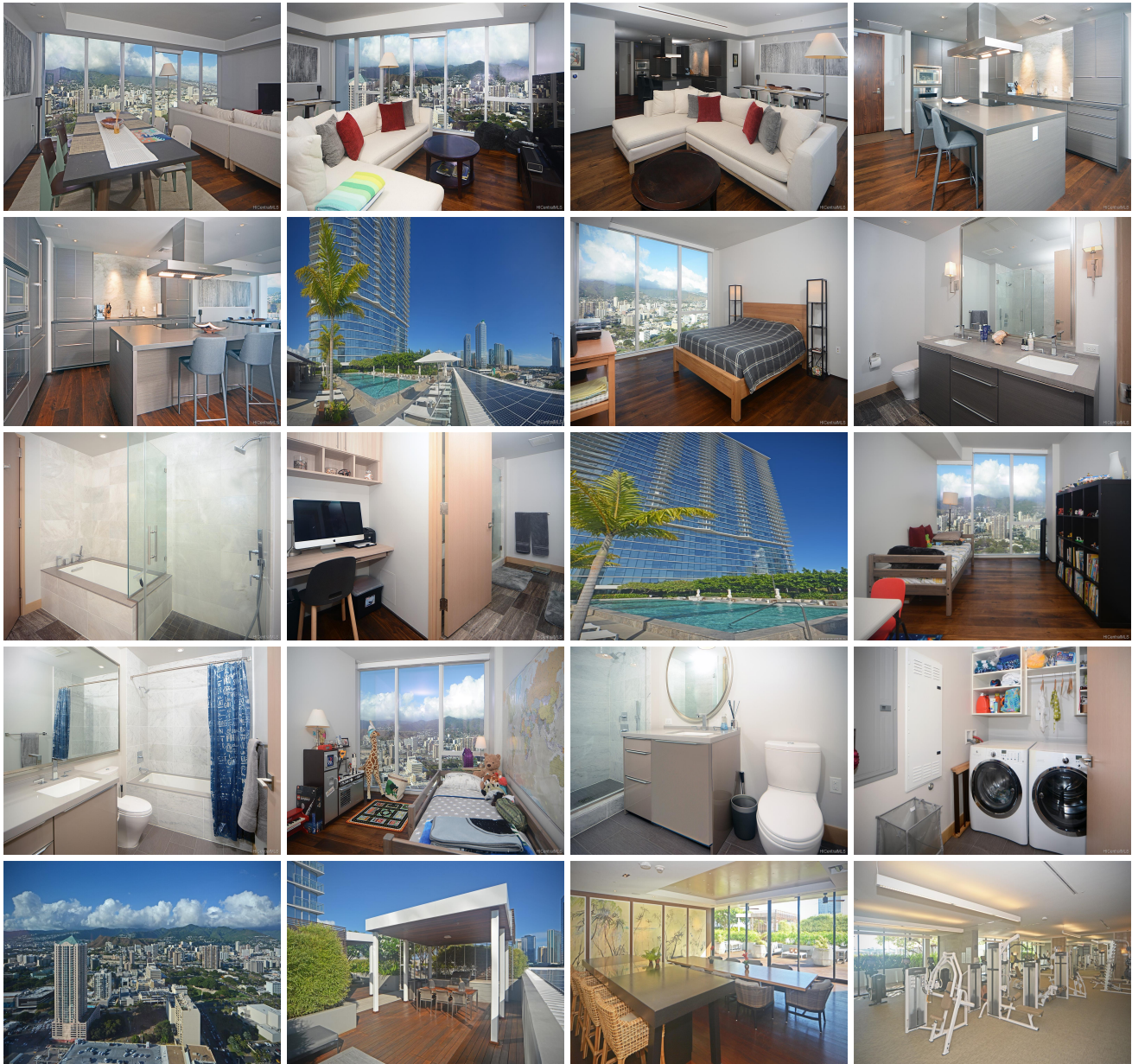
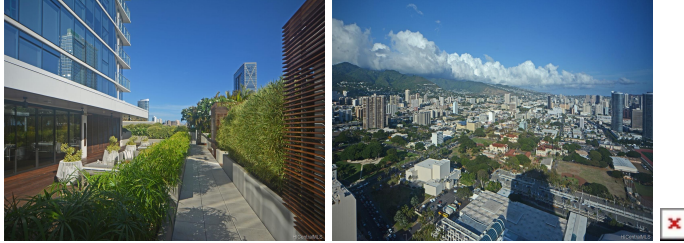


**Symphony Honolulu 888 Kapiolani Boulevard Unit 4408, Honolulu 96813 \* Symphony  
Honolulu \* \$1,200,000 \* Originally \$2,000,000**

Sold Price: \$1,625,000	Sold Date: 01-10-2020	Sold Ratio: 135%
Beds: <b>3</b>	MLS#: <b><u>201911230</u>, FS</b>	Year Built: <b>2016</b>
Bath: <b>3/0</b>	Status: <b>Sold</b>	Remodeled:
Living Sq. Ft.: <b>1,653</b>	List Date & DOM: <b>04-20-2019 &amp; 229</b>	Total Parking: <b>2</b>
Land Sq. Ft.: <b>0</b>	Condition: <b>Excellent</b>	<a href="#">Assessed Value</a>
Lanai Sq. Ft.: <b>0</b>	Frontage:	Building: <b>\$1,761,900</b>
Sq. Ft. Other: <b>0</b>	Tax/Year: <b>\$478/2018</b>	Land: <b>\$93,600</b>
Total Sq. Ft. <b>1,653</b>	Neighborhood: <b>Kakaako</b>	Total: <b>\$1,855,500</b>
Maint./Assoc. <b>\$1,086 / \$0</b>	<a href="#">Flood Zone</a> : <b>Zone X - Tool</b>	Stories / CPR: <b>21+ / No</b>
Parking: <b>Assigned, Covered - 2, Guest, Secured Entry</b>	Frontage:	
<a href="#">Zoning</a> : <b>KA - State jurisdiction, refer</b>	View: <b>City, Mountain, Sunrise</b>	

**Public Remarks:** Luxury Live Auction! Bidding to start from \$1,200,000! Immaculate Penthouse unit at Symphony Honolulu. Rare 3 bed, 3 bath layout with floor to ceiling windows and the only Penthouse with darker cabinets and flooring finishes. Facing mauka with incredible view of Punchbowl Crater and the Koolau Mountain range on the cool side of the building. One of the best deals going for maintenance fees when comparing newer buildings in Kakaako! Some of the amenities in this secured building include BBQ Cabanas, swimming pool, sauna and fitness center. Also, world class entertainment across the street at the Neal Blaisdell Center and adjacent to Velocity Honolulu for the finest luxury cars on Oahu... **Sale Conditions:** None **Schools:** [Royal](#), [Central](#), [Mckinley](#) \* [Request Showing](#), [Photos](#), [History](#), [Maps](#), [Deed](#), [Watch List](#), [Tax Info](#)





Address	Price	Bd & Bth	Living / Avg.	Land   Avg.	Lanai	Occ.	FL	DOM
<a href="#">888 Kapiolani Boulevard 4408</a>	<b>\$1,200,000</b>	3 & 3/0	1,653   \$726	0   \$inf	0	63%	44	229

Address	Tax   Maint.   Ass.	Assessed Land	Assessed Building	Assessed Total	Ratio	Year & Remodeled
<a href="#">888 Kapiolani Boulevard 4408</a>	\$478   \$1,086   \$0	\$93,600	\$1,761,900	\$1,855,500	65%	2016 & NA

Address	Sold Price	Sold Date	Sold Ratio	Original Ratio	Sold Terms
<a href="#">888 Kapiolani Boulevard 4408</a>	\$1,625,000	01-10-2020	135%	81%	Cash

[888 Kapiolani Boulevard 4408](#) - MLS#: [201911230](#) - Original price was \$2,000,000 - Luxury Live Auction! Bidding to start from \$1,200,000! Immaculate Penthouse unit at Symphony Honolulu. Rare 3 bed, 3 bath layout with floor to ceiling windows and the only Penthouse with darker cabinets and flooring finishes. Facing mauka with incredible view of Punchbowl Crater and the Koolau Mountain range on the cool side of the building. One of the best deals going for maintenance fees when comparing newer buildings in Kakaako! Some of the amenities in this secured building include BBQ Cabanas, swimming pool, sauna and fitness center. Also, world class entertainment across the street at the Neal Blaisdell Center and adjacent to Velocity Honolulu for the finest luxury cars on Oahu... **Region:** Metro **Neighborhood:** Kakaako **Condition:** Excellent **Parking:** Assigned, Covered - 2, Guest, Secured Entry **Total Parking:** 2 **View:** City, Mountain, Sunrise **Frontage:** **Pool:** **Zoning:** KA - State jurisdiction, refer **Sale Conditions:** None **Schools:** [Royal](#), [Central](#), [Mckinley](#) \* [Request Showing](#), [Photos](#), [History](#), [Maps](#), [Deed](#), [Watch List](#), [Tax Info](#)

DOM = Days on Market, Occ. = Occupancy, FL = Floor Number