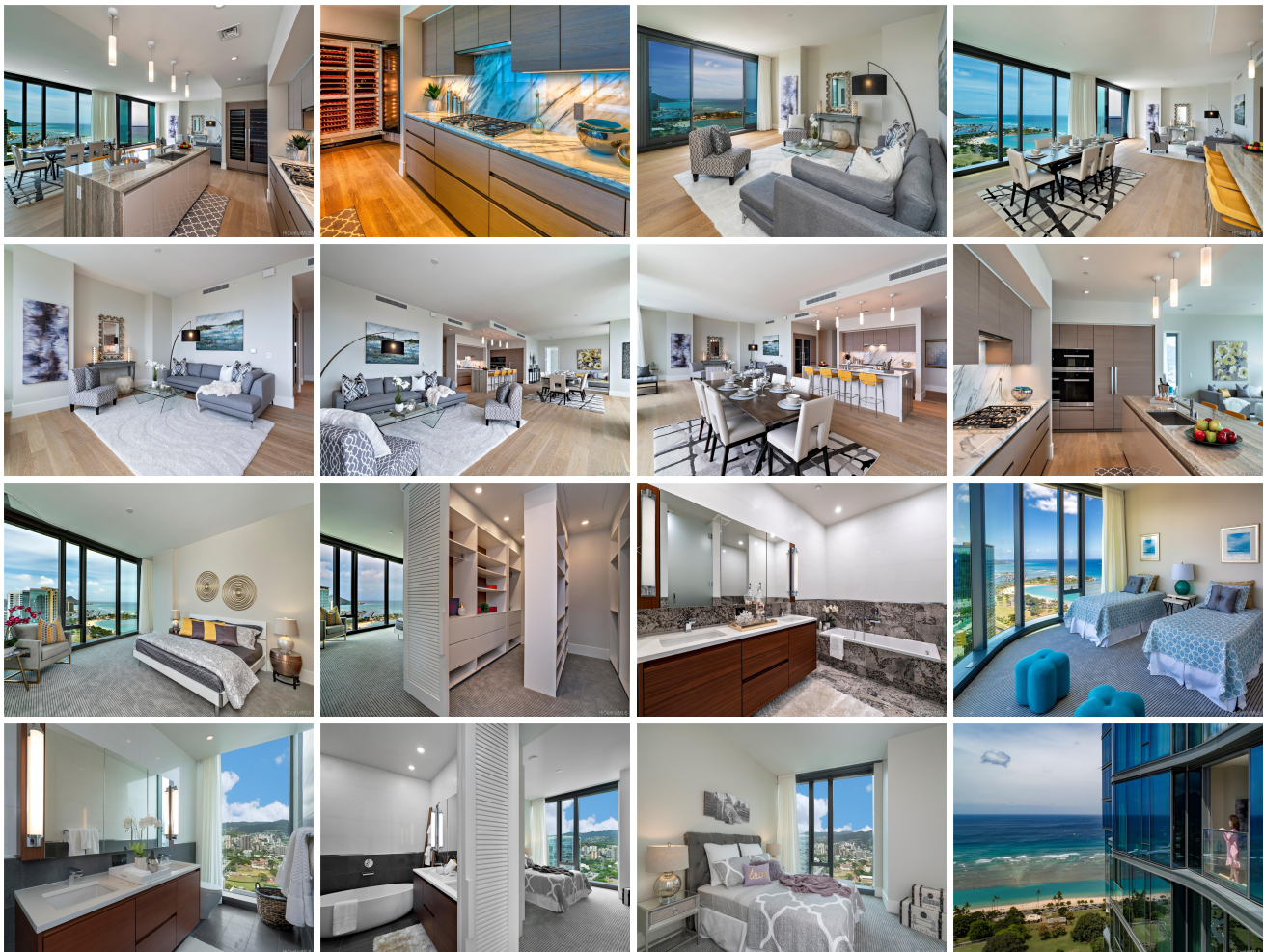


Anaha - 1108 Auahi 1108 Auahi Street Unit PH 3602, Honolulu 96814 * Anaha - 1108 Auahi

*** \$4,980,000**

Sold Price: \$4,650,000	Sold Date: 09-27-2019	Sold Ratio: 93%
Beds: 4	MLS#: 201913534, FS	Year Built: 2017
Bath: 4/1	Status: Sold	Remodeled:
Living Sq. Ft.: 2,906	List Date & DOM: 05-09-2019 & 120	Total Parking: 2
Land Sq. Ft.: 0	Condition: Excellent	Assessed Value
Lanai Sq. Ft.: 0	Frontage: Other	Building: \$3,908,100
Sq. Ft. Other: 0	Tax/Year: \$1,802/2018	Land: \$130,700
Total Sq. Ft. 2,906	Neighborhood: Kakaako	Total: \$4,038,800
Maint./Assoc. \$3,613 / \$0	Flood Zone : Zone AE - Tool	Stories / CPR: 21+ / No
Parking: Covered - 2	Frontage: Other	
Zoning : Kak - Kakaako Community Development Project	View: Diamond Head, Ocean	

Public Remarks: Unwind in this rare four bedroom, four and one-half bath penthouse unit in Anaha, Honolulu's newest luxury condo. With approximately 3,000 sq. ft. of living space, this spacious unit feels like a house and is a must-see. The expansive open floor plan with 10-ft ceilings and spectacular floor-to-ceiling windows showcase panoramic views of the ocean, mountains, and Diamond Head. Each of the unit's four bedrooms has floor-to-ceiling windows and its own private ensuite bathroom. This home features two full-sized wine cellars, top-of-the-line Miele appliances, European cabinetry, quartz counters, hardwood flooring, custom lighting, walk-in closets, separate laundry room, and upgraded interior finishes. Enjoy the building's resort-like amenities including a large gym with both sauna and steam room, heated pool, Jacuzzi, barbecue area, playground, meeting room, party room, dining deck, dog park, tennis court, beach volleyball, putting green, and golf simulator room. **Sale Conditions:** None **Schools:** [Kaahumanu](#), [Washington](#), [Mckinley](#) * [Request Showing](#), [Photos](#), [History](#), [Maps](#), [Deed](#), [Watch List](#), [Tax Info](#)





Address	Price	Bd & Bth	Living / Avg.	Land Avg.	Lanai	Occ.	FL	DOM
1108 Auahi Street PH 3602	\$4,980,000	4 & 4/1	2,906 \$1,714	0 \$inf	0	50%	36	120

Address	Tax Maint. Ass.	Assessed Land	Assessed Building	Assessed Total	Ratio	Year & Remodeled
1108 Auahi Street PH 3602	\$1,802 \$3,613 \$0	\$130,700	\$3,908,100	\$4,038,800	123%	2017 & NA

Address	Sold Price	Sold Date	Sold Ratio	Original Ratio	Sold Terms
1108 Auahi Street PH 3602	\$4,650,000	09-27-2019	93%	93%	Cash

[1108 Auahi Street PH 3602](#) - MLS#: [201913534](#) - Unwind in this rare four bedroom, four and one-half bath penthouse unit in Anaha, Honolulu's newest luxury condo. With approximately 3,000 sq. ft. of living space, this spacious unit feels like a house and is a must-see. The expansive open floor plan with 10-ft ceilings and spectacular floor-to-ceiling windows showcase panoramic views of the ocean, mountains, and Diamond Head. Each of the unit's four bedrooms has floor-to-ceiling windows and its own private ensuite bathroom. This home features two full-sized wine cellars, top-of-the-line Miele appliances, European cabinetry, quartz counters, hardwood flooring, custom lighting, walk-in closets, separate laundry room, and upgraded interior finishes. Enjoy the building's resort-like amenities including a large gym with both sauna and steam room, heated pool, Jacuzzi, barbecue area, playground, meeting room, party room, dining deck, dog park, tennis court, beach volleyball, putting green, and golf simulator room. **Region:** Metro **Neighborhood:** Kakaako **Condition:** Excellent **Parking:** Covered - 2 **Total Parking:** 2 **View:** Diamond Head, Ocean **Frontage:** Other **Pool:** **Zoning:** Kak - Kakaako Community Development Project **Sale Conditions:** None **Schools:** [Kaahumanu](#), [Washington](#), [Mckinley](#) * [Request Showing](#), [Photos](#), [History](#), [Maps](#), [Deed](#), [Watch List](#), [Tax Info](#)

DOM = Days on Market, Occ. = Occupancy, FL = Floor Number