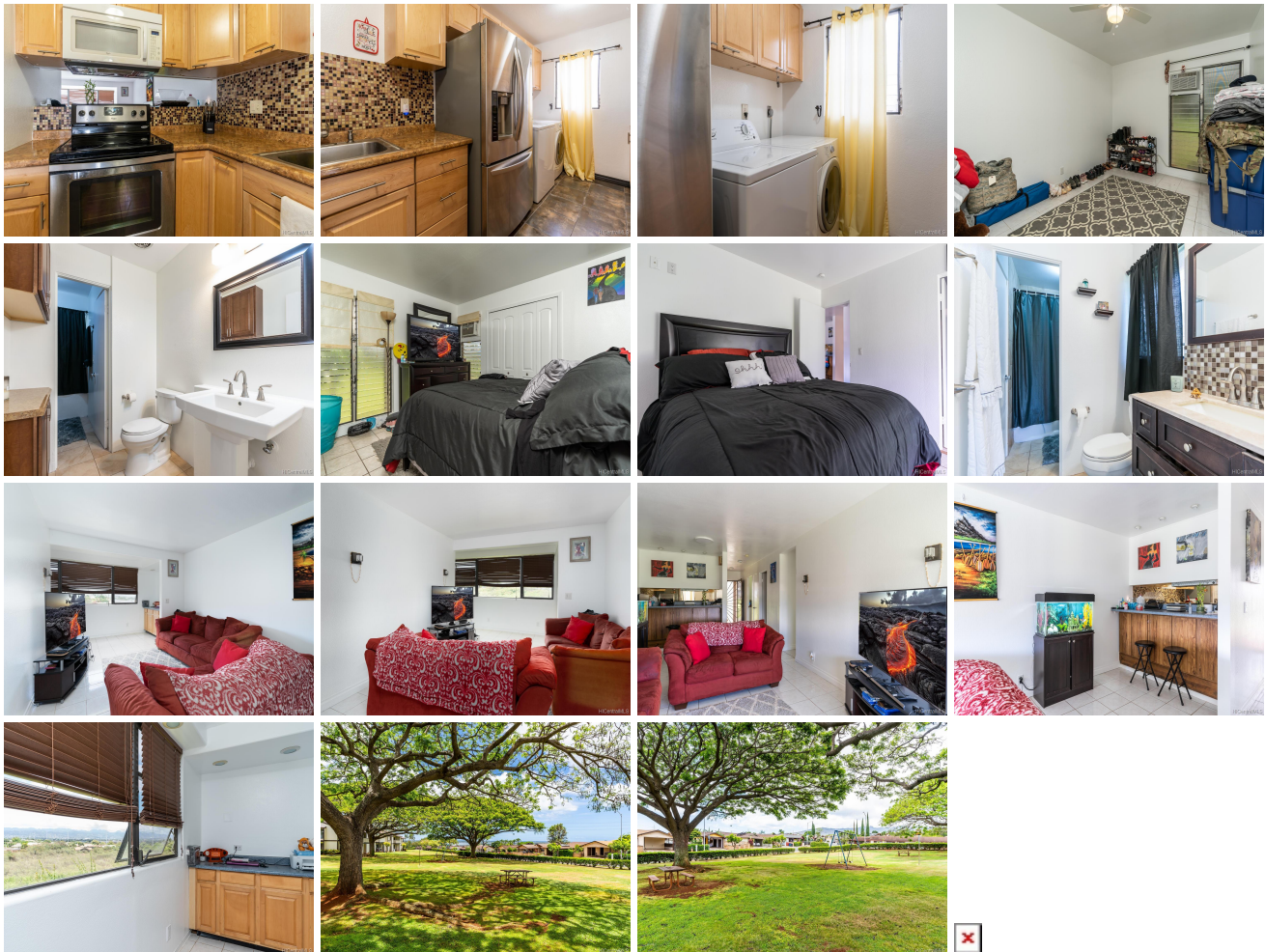


Parkview Village Condo 94-615 Kahakea Street Unit 6G, Waipahu 96797 * Parkview Village

Condo * \$380,000

Sold Price: \$380,000 Beds: 2 Bath: 1/1 Living Sq. Ft.: 875 Land Sq. Ft.: 917,199 Lanai Sq. Ft.: 0 Sq. Ft. Other: 0 Total Sq. Ft. 875 Maint./Assoc. \$437 / \$11 Parking: Assigned, Open - 2 Zoning: 11 - A-1 Low Density Apartment	Sold Date: 07-17-2019 MLS#: 201914956, FS Status: Sold List Date & DOM: 05-31-2019 & 18 Condition: Above Average Frontage: Tax/Year: \$77/2019 Neighborhood: Village Park Flood Zone: Zone D - Tool	Sold Ratio: 100% Year Built: 1981 Remodeled: Total Parking: 2 Assessed Value Building: \$96,700 Land: \$270,200 Total: \$366,900 Stories / CPR: One / No Frontage: View: Garden
---	--	--

Public Remarks: This cozy 2 bedroom, 1.5 bath ground floor unit in Parkview Village is a great opportunity for a first-time home-buyer or investor. A well-maintained unit with a functional floor plan, ceramic tile flooring throughout, A/C window units in each bedroom, updated kitchen with stainless steel appliances, washer/dryer, and an enclosed lanai for additional living space. Without a building behind, there are great breezes that flow through the unit. Quick access to the freeway, elementary school, park, Kunia Box Car Racing, and a shopping center with Wal Mart, Times, eateries, and various shops. **Sale Conditions:** None **Schools:** [Kaleiopuu](#), [Waipahu](#), [Waipahu](#) * [Request Showing](#), [Photos](#), [History](#), [Maps](#), [Deed](#), [Watch List](#), [Tax Info](#)



Address	Price	Bd & Bth	Living / Avg.	Land Avg.	Lanai	Occ.	FL	DOM
94-615 Kahakea Street 6G	\$380,000	2 & 1/1	875 \$434	917,199 \$0	0	64%	1	18

Address	Tax Maint. Ass.	Assessed Land	Assessed Building	Assessed Total	Ratio	Year & Remodeled
94-615 Kahakea Street 6G	\$77 \$437 \$11	\$270,200	\$96,700	\$366,900	104%	1981 & NA

Address	Sold Price	Sold Date	Sold Ratio	Original Ratio	Sold Terms
94-615 Kahakea Street 6G	\$380,000	07-17-2019	100%	100%	Conventional

[94-615 Kahakea Street 6G](#) - MLS#: [201914956](#) - This cozy 2 bedroom, 1.5 bath ground floor unit in Parkview Village is a great opportunity for a first-time home-buyer or investor. A well-maintained unit with a functional floor plan, ceramic tile flooring throughout, A/C window units in each bedroom, updated kitchen with stainless steel appliances, washer/dryer, and an enclosed lanai for additional living space. Without a building behind, there are great breezes that flow through the unit. Quick access to the freeway, elementary school, park, Kunia Box Car Racing, and a shopping center with Wal Mart, Times, eateries, and various shops. **Region:** Waipahu **Neighborhood:** Village Park **Condition:** Above Average **Parking:** Assigned, Open - 2 **Total Parking:** 2 **View:** Garden **Frontage:** **Pool:** **Zoning:** 11 - A-1 Low Density Apartment **Sale Conditions:** None **Schools:** [Kaleiopuu](#), [Waipahu](#), [Waipahu](#) * [Request Showing](#), [Photos](#), [History](#), [Maps](#), [Deed](#), [Watch List](#), [Tax Info](#)

DOM = Days on Market, Occ. = Occupancy, FL = Floor Number