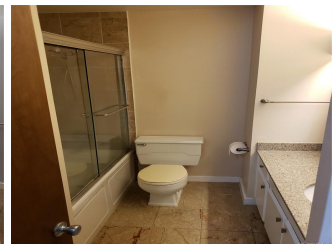
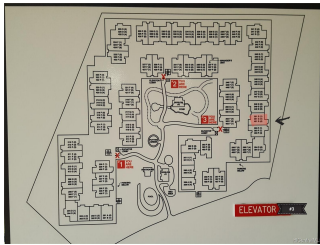


**PoINCIANA Manor 1015 Aolaa Place Unit 351, Kailua 96734 \* PoINCIANA Manor \* \$495,000 \***

**Originally \$518,000**

Sold Price: \$485,000	Sold Date: 10-22-2019	Sold Ratio: 98%
Beds: <b>2</b>	MLS#: <b><u>201915197</u>, FS</b>	Year Built: <b>1975</b>
Bath: <b>2/0</b>	Status: <b>Sold</b>	Remodeled:
Living Sq. Ft.: <b>959</b>	List Date & DOM: <b>06-05-2019 &amp; 86</b>	Total Parking: <b>2</b>
Land Sq. Ft.: <b>220,762</b>	Condition: <b>Above Average</b>	<a href="#">Assessed Value</a>
Lanai Sq. Ft.: <b>82</b>	Frontage:	Building: <b>\$360,500</b>
Sq. Ft. Other: <b>0</b>	Tax/Year: <b>\$160/2018</b>	Land: <b>\$202,800</b>
Total Sq. Ft. <b>1,041</b>	Neighborhood: <b>Kailua Town</b>	Total: <b>\$563,300</b>
Maint./Assoc. <b>\$720 / \$0</b>	<a href="#">Flood Zone</a> : <b>Zone X - Tool</b>	Stories / CPR: <b>One / No</b>
Parking: <b>Assigned, Covered - 2, Guest</b>	Frontage:	
<a href="#">Zoning</a> : <b>12 - A-2 Medium Density Apartme</b>	View: <b>Garden</b>	

**Public Remarks:** 2 bedroom 2 bath 2 parking unit in PoINCIANA Manor. Large open Living Area with Lanai access. Unit features Pergo/carpet & tile flooring. Includes quality mirrored sliding doors on bedroom closets. Large master bedroom with attached master bath. Stainless Steel Appliances, Unit to be sold "As-Is". Walking distance to Kailua Beach & Kailua Town. Amenities include beautiful grounds, swimming pool with patio, clubhouse, BBQ. On site resident manager. Includes 2 covered assigned parking stalls and storage locker. **Sale Conditions:** None **Schools:** , , \* [Request Showing](#), [Photos](#), [History](#), [Maps](#), [Deed](#), [Watch List](#), [Tax Info](#)





Address	Price	Bd & Bth	Living / Avg.	Land   Avg.	Lanai	Occ.	FL	DOM
<a href="#">1015 Aoloa Place 351</a>	<b>\$495,000</b>	2 & 2/0	959   \$516	220,762   \$2	82	56%	1	86

Address	Tax   Maint.   Ass.	Assessed Land	Assessed Building	Assessed Total	Ratio	Year & Remodeled
<a href="#">1015 Aoloa Place 351</a>	\$160   \$720   \$0	\$202,800	\$360,500	\$563,300	88%	1975 & NA

Address	Sold Price	Sold Date	Sold Ratio	Original Ratio	Sold Terms
<a href="#">1015 Aoloa Place 351</a>	\$485,000	10-22-2019	98%	94%	Conventional

<p><a href="#">1015 Aoloa Place 351</a> - MLS#: <a href="#">201915197</a> - Original price was \$518,000 - 2 bedroom 2 bath 2 parking unit in Poinciana Manor. Large open Living Area with Lanai access. Unit features Pergo/carpet &amp; tile flooring. Includes quality mirrored sliding doors on bedroom closets. Large master bedroom with attached master bath. Stainless Steel Appliances, Unit to be sold "As-Is". Walking distance to Kailua Beach &amp; Kailua Town. Amenities include beautiful grounds, swimming pool with patio, clubhouse, BBQ. On site resident manager. Includes 2 covered assigned parking stalls and storage locker. <b>Region:</b> Kailua <b>Neighborhood:</b> Kailua Town <b>Condition:</b> Above Average <b>Parking:</b> Assigned, Covered - 2, Guest <b>Total Parking:</b> 2 <b>View:</b> Garden <b>Frontage:</b> <b>Pool:</b> <b>Zoning:</b> 12 - A-2 Medium Density Apartme <b>Sale Conditions:</b> None <b>Schools:</b> , , * <a href="#">Request Showing, Photos, History, Maps, Deed, Watch List, Tax Info</a></p>						
--	--	--	--	--	--	--

DOM = Days on Market, Occ. = Occupancy, FL = Floor Number