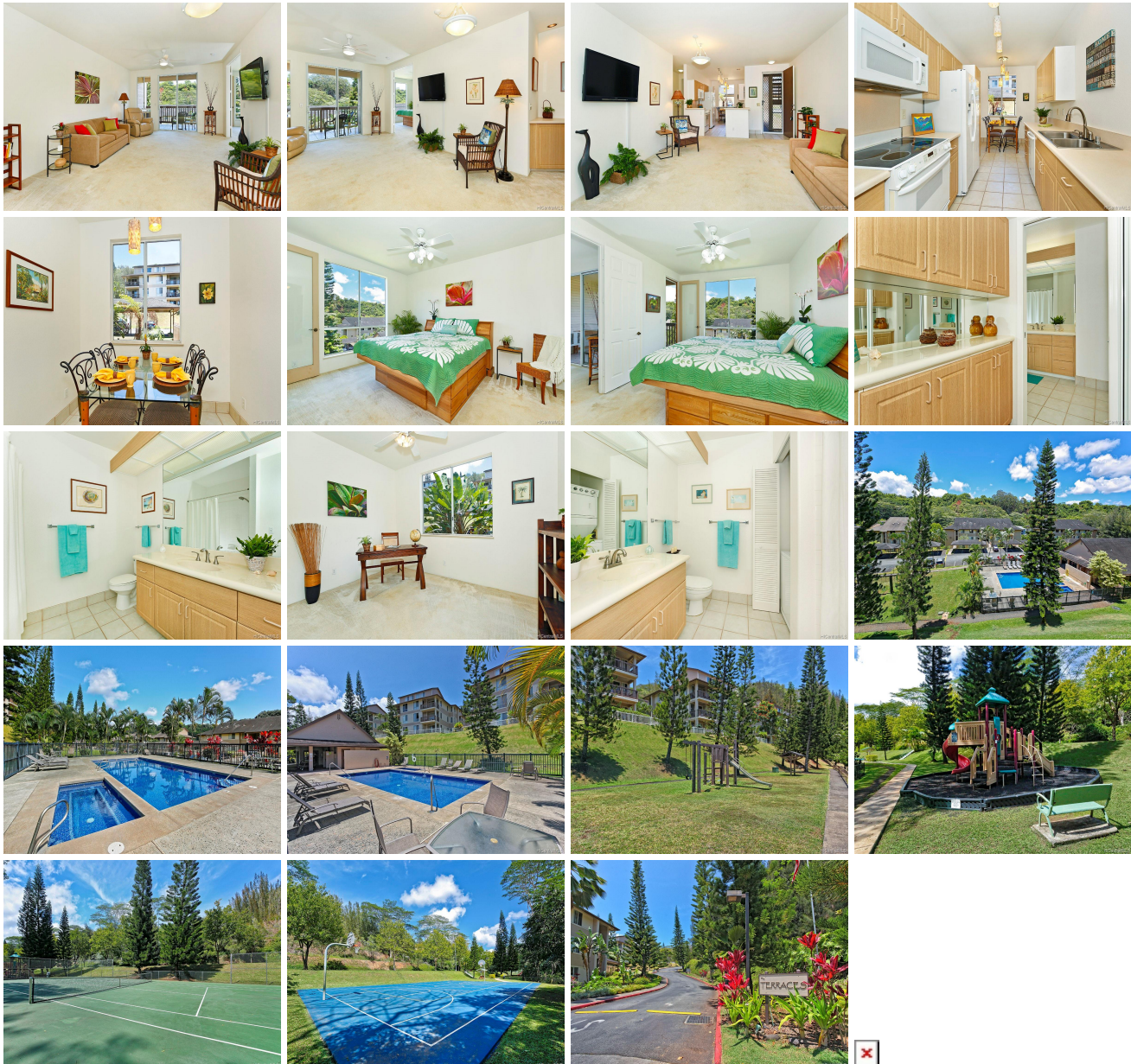


**Terraces At Launani Valley 95-968 Wikao Street Unit H203, Mililani 96789 \* Terraces At Launani Valley \* \$445,000 \* Originally \$455,000**

Sold Price: \$430,000	Sold Date: 09-06-2019	Sold Ratio: 97%
Beds: <b>2</b>	MLS#: <b><u>201917149</u></b> , FS	Year Built: <b>1995</b>
Bath: <b>2/0</b>	Status: <b>Sold</b>	Remodeled:
Living Sq. Ft.: <b>1,056</b>	List Date & DOM: <b>06-17-2019 &amp; 36</b>	Total Parking: <b>2</b>
Land Sq. Ft.: <b>0</b>	Condition: <b>Above Average</b>	<a href="#">Assessed Value</a>
Lanai Sq. Ft.: <b>126</b>	Frontage:	Building: <b>\$243,300</b>
Sq. Ft. Other: <b>0</b>	Tax/Year: <b>\$107/2019</b>	Land: <b>\$216,600</b>
Total Sq. Ft. <b>1,182</b>	Neighborhood: <b>Launani Valley</b>	Total: <b>\$459,900</b>
Maint./Assoc. <b>\$490 / \$65</b>	<a href="#">Flood Zone</a> : <b>Zone D - Tool</b>	Stories / CPR: <b>Three / No</b>
Parking: <b>Assigned, Covered - 1, Guest, Open - 1</b>	Frontage:	
<a href="#">Zoning</a> : <b>05 - R-5 Residential District</b>	View: <b>Mountain</b>	

**Public Remarks:** Experience the peaceful tropical setting in lush Launani Valley in this wonderful 2/2 unit at the Terraces! From the moment you walk in, you feel the sense of home with the open floor plan the 9' ceilings, the delightful kitchen w/dining area and the spacious master bedroom that has a door to the lanai. Having a single level unit with no stairs from the parking stalls to the front door and throughout is a very special feature! The 2nd bedroom looks out toward the front, both bathrooms are incredibly generous & a lanai with pretty views & cool breezes. Amenities include: Pool, spa, clubhouse with party room & BBQ grills, children's playground, tennis & basketball courts, on-site manager, security patrol, & walking/jogging paths. Home warranty included. Welcome Home! **Sale Conditions:** None **Schools:** [Wheeler](#), [Wheeler](#), [Leilehua](#) \* [Request Showing](#), [Photos](#), [History](#), [Maps](#), [Deed](#), [Watch List](#), [Tax Info](#)



Address	Price	Bd & Bth	Living / Avg.	Land   Avg.	Lanai	Occ.	FL	DOM
<a href="#">95-968 Wikao Street H203</a>	<b>\$445,000</b>	2 & 2/0	1,056   \$421	0   \$inf	126	71%	2	36

Address	Tax   Maint.   Ass.	Assessed Land	Assessed Building	Assessed Total	Ratio	Year & Remodeled
<a href="#">95-968 Wikao Street H203</a>	\$107   \$490   \$65	\$216,600	\$243,300	\$459,900	97%	1995 & NA

Address	Sold Price	Sold Date	Sold Ratio	Original Ratio	Sold Terms
<a href="#">95-968 Wikao Street H203</a>	\$430,000	09-06-2019	97%	95%	VA

[95-968 Wikao Street H203](#) - MLS#: [201917149](#) - Original price was \$455,000 - Experience the peaceful tropical setting in lush Launani Valley in this wonderful 2/2 unit at the Terraces! From the moment you walk in, you feel the sense of home with the open floor plan the 9' ceilings, the delightful kitchen w/dining area and the spacious master bedroom that has a door to the lanai. Having a single level unit with no stairs from the parking stalls to the front door and throughout is a very special feature! The 2nd bedroom looks out toward the front, both bathrooms are incredibly generous & a lanai with pretty views & cool breezes. Amenities include: Pool, spa, clubhouse with party room & BBQ grills, children's playground, tennis & basketball courts, on-site manager, security patrol, & walking/jogging paths. Home warranty included. Welcome Home!

**Region:** Central **Neighborhood:** Launani Valley **Condition:** Above Average **Parking:** Assigned, Covered - 1, Guest, Open - 1 **Total Parking:** 2 **View:** Mountain **Frontage:** **Pool:** **Zoning:** 05 - R-5 Residential District **Sale Conditions:** None

**Schools:** [Wheeler](#), [Wheeler](#), [Leilehua](#) \* [Request Showing](#), [Photos](#), [History](#), [Maps](#), [Deed](#), [Watch List](#), [Tax Info](#)

DOM = Days on Market, Occ. = Occupancy, FL = Floor Number