

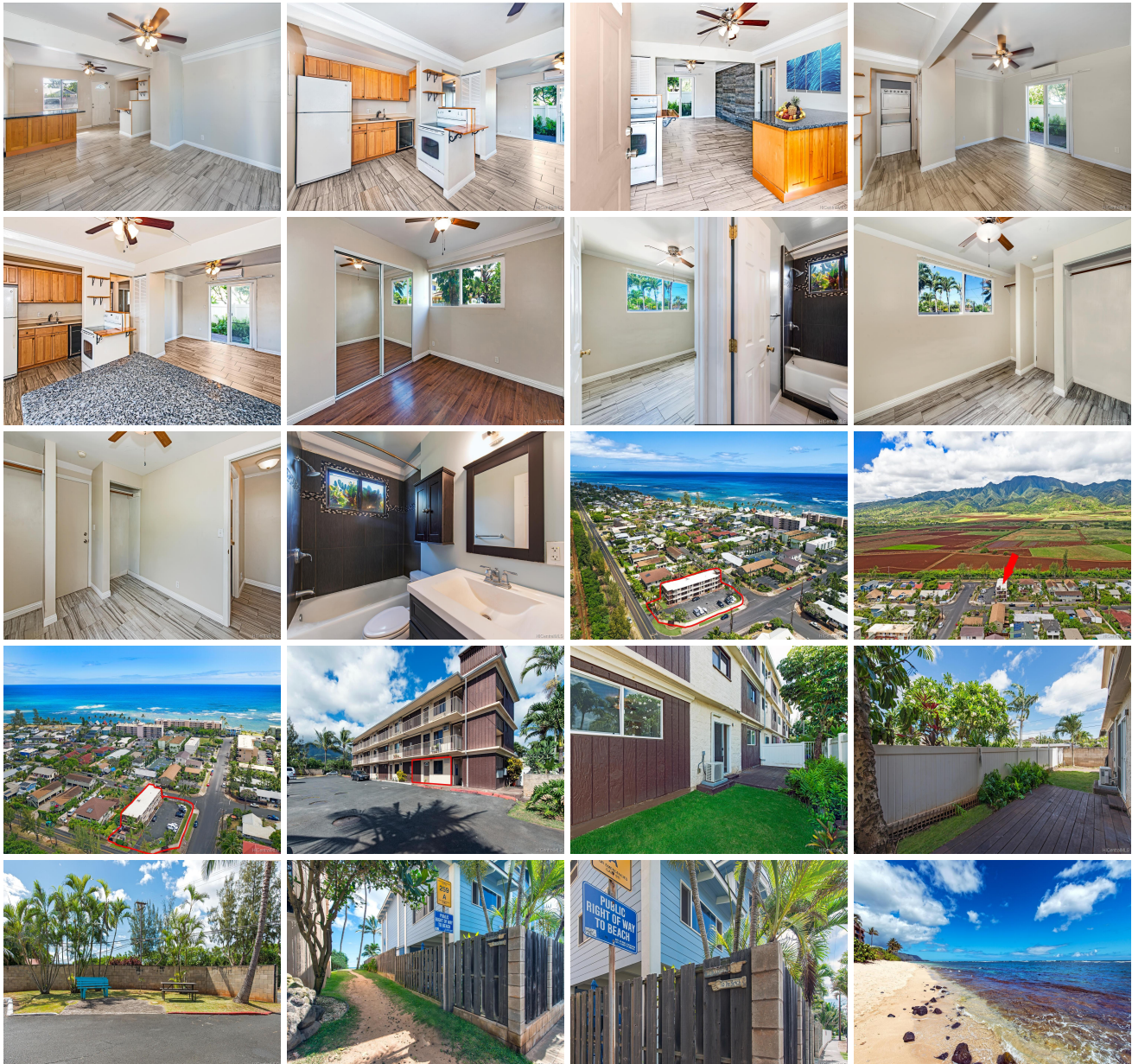
Mokuleia Shores 68-041 Waialua Beach Road Unit 104, Waialua 96791 * Mokuleia Shores *

\$349,000

Sold Price: \$335,000	Sold Date: 08-29-2019	Sold Ratio: 96%
Beds: 2	MLS#: <u>201918242</u>, FS	Year Built: 1975
Bath: 1/0	Status: Sold	Remodeled: 2005
Living Sq. Ft.: 699	List Date & DOM: 06-25-2019 & 8	Total Parking: 1
Land Sq. Ft.: 14,636	Condition: Excellent	Assessed Value
Lanai Sq. Ft.: 0	Frontage:	Building: \$169,800
Sq. Ft. Other: 0	Tax/Year: \$86/2019	Land: \$104,200
Total Sq. Ft. 699	Neighborhood: Waialua	Total: \$274,000
Maint./Assoc. \$561 / \$0	Flood Zone : Zone AE - Tool	Stories / CPR: 4-7 / No
Parking: Assigned, Guest	Frontage:	
Zoning : 11 - A-1 Low Density Apartment	View: None, Sunrise	

Public Remarks: Enjoy beach living in this corner end ground floor unit condominium on the beautiful North Shore of Oahu! With your own large outdoor grass yard and platform wood deck to entertain guest. This beautiful 2-bedroom, 1 bathroom unit in a pet friendly bldg. along with 1 parking stall. Stay cool with a central split AC unit on those hot summer days. Incredible location for an ultra-convenient beach lifestyle, near bike path and steps to a beautiful white sandy beach. Close to Schofield Barracks. Just minutes to Historic Haleiwa Town. Live the island lifestyle & play in Hawaii! Sold As IS. **Sale**

Conditions: None **Schools:** [Waialua](#), [Waialua](#), [Waialua](#) * [Request Showing](#), [Photos](#), [History](#), [Maps](#), [Deed](#), [Watch List](#), [Tax Info](#)





Address	Price	Bd & Bth	Living / Avg.	Land Avg.	Lanai	Occ.	FL	DOM
68-041 Waialua Beach Road 104	\$349,000	2 & 1/0	699 \$499	14,636 \$24	0	50%	104	8

Address	Tax Maint. Ass.	Assessed Land	Assessed Building	Assessed Total	Ratio	Year & Remodeled
68-041 Waialua Beach Road 104	\$86 \$561 \$0	\$104,200	\$169,800	\$274,000	127%	1975 & 2005

Address	Sold Price	Sold Date	Sold Ratio	Original Ratio	Sold Terms
68-041 Waialua Beach Road 104	\$335,000	08-29-2019	96%	96%	Conventional

[68-041 Waialua Beach Road 104](#) - MLS#: [201918242](#) - Enjoy beach living in this corner end ground floor unit condominium on the beautiful North Shore of Oahu! With your own large outdoor grass yard and platform wood deck to entertain guest. This beautiful 2-bedroom, 1 bathroom unit in a pet friendly bldg. along with 1 parking stall. Stay cool with a central split AC unit on those hot summer days. Incredible location for an ultra-convenient beach lifestyle, near bike path and steps to a beautiful white sandy beach. Close to Schofield Barracks. Just minutes to Historic Haleiwa Town. Live the island lifestyle & play in Hawaii! Sold As IS. **Region:** North Shore **Neighborhood:** Waialua **Condition:** Excellent **Parking:** Assigned, Guest **Total Parking:** 1 **View:** None, Sunrise **Frontage:** Pool: **Zoning:** 11 - A-1 Low Density Apartment **Sale Conditions:** None **Schools:** [Waialua](#), [Waialua](#), [Waialua](#) * [Request Showing](#), [Photos](#), [History](#), [Maps](#), [Deed](#), [Watch List](#), [Tax Info](#)

DOM = Days on Market, Occ. = Occupancy, FL = Floor Number