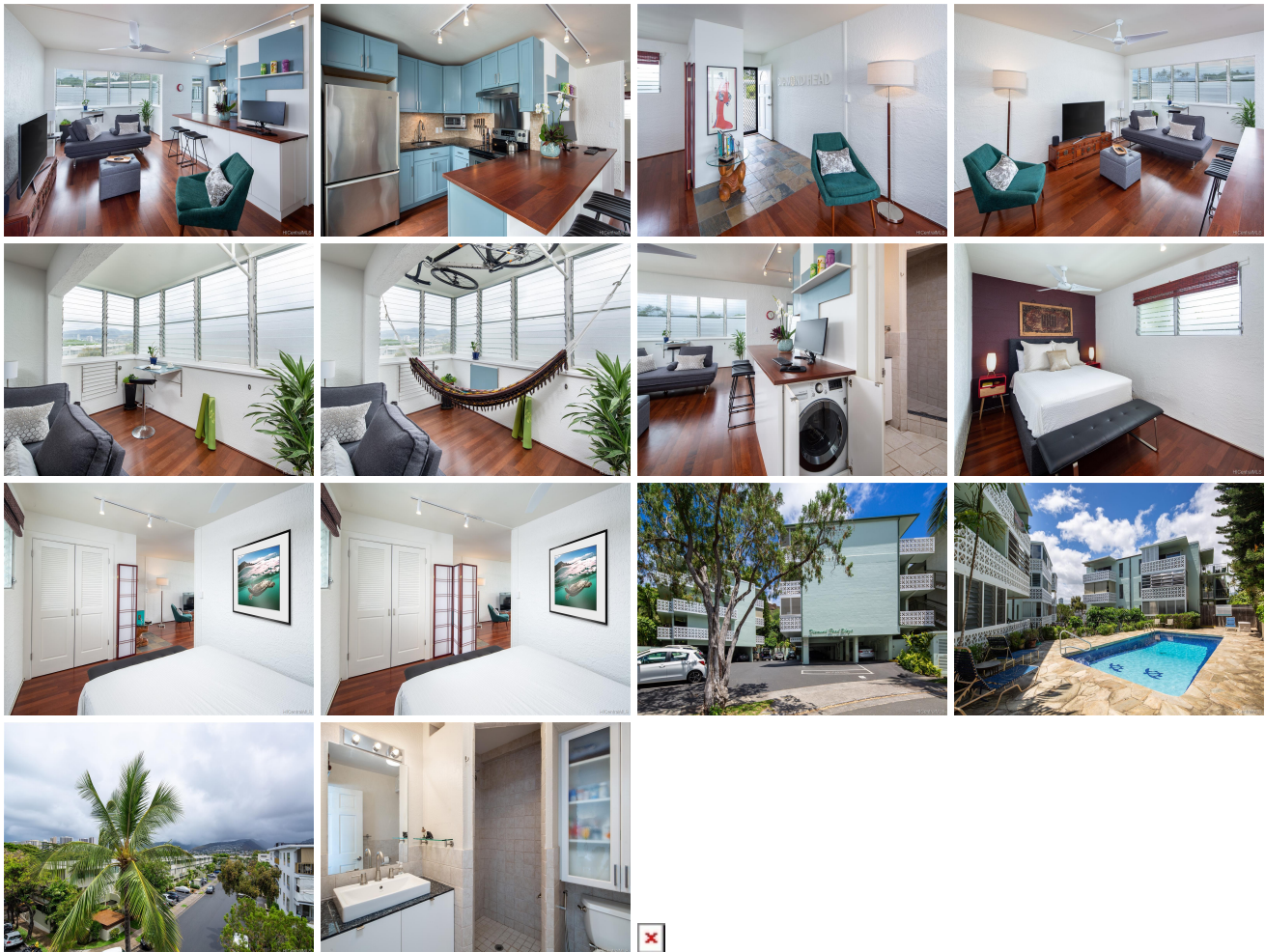


## Diamond Head Plaza 3061 Pualei Circle Unit 303, Honolulu 96815 \* Diamond Head Plaza \*

**\$510,000**

Sold Price: \$502,750	Sold Date: 09-05-2019	Sold Ratio: 99%
Beds: <b>1</b>	MLS#: <b>201918444, FS</b>	Year Built: <b>1965</b>
Bath: <b>1/0</b>	Status: <b>Sold</b>	Remodeled: <b>2019</b>
Living Sq. Ft.: <b>615</b>	List Date & DOM: <b>06-27-2019 &amp; 41</b>	Total Parking: <b>1</b>
Land Sq. Ft.: <b>0</b>	Condition: <b>Excellent</b>	<a href="#">Assessed Value</a>
Lanai Sq. Ft.: <b>0</b>	Frontage: <b>Other</b>	Building: <b>\$288,800</b>
Sq. Ft. Other: <b>0</b>	Tax/Year: <b>\$108/2019</b>	Land: <b>\$162,500</b>
Total Sq. Ft. <b>615</b>	Neighborhood: <b>Diamond Head</b>	Total: <b>\$451,300</b>
Maint./Assoc. <b>\$460 / \$0</b>	<a href="#">Flood Zone</a> : <b>Zone X - Tool</b>	Stories / CPR: <b>Three / No</b>
Parking: <b>Covered - 1, Street</b>	Frontage: <b>Other</b>	
<a href="#">Zoning</a> : <b>12 - A-2 Medium Density Apartme</b>	View: <b>City, Mountain</b>	

**Public Remarks:** Amazing find in Pualei Circle neighborhood! Nestled at the foot of Diamond Head within minutes to the beaches, shopping and nightlife of Waikiki as well Kapiolani Park. Beautiful upgrades with a smart design taking advantage of the trade winds and views. Marvel at the panoramic mountain views over the tree tops of Pualei Circle. Quality renovations include hardwood floors throughout, granite counter tops, built in combo washer/dryer and enclosed lanai create a spacious home with lots of light. One covered parking and pet friendly are added bonuses of this home at the Diamond Head Plaza in this special neighborhood. **Sale Conditions:** None **Schools:** [Waikiki](#), [Kaimuki](#), [Kalani](#) \* [Request Showing](#), [Photos](#), [History](#), [Maps](#), [Deed](#), [Watch List](#), [Tax Info](#)



Address	Price	Bd & Bth	Living / Avg.	Land   Avg.	Lanai	Occ.	FL	DOM
<a href="#">3061 Pualei Circle 303</a>	<a href="#">\$510,000</a>	1 & 1/0	615   \$829	0   \$inf	0	59%	3	41

Address	Tax   Maint.   Ass.	Assessed Land	Assessed Building	Assessed Total	Ratio	Year & Remodeled
<a href="#">3061 Pualei Circle 303</a>	\$108   \$460   \$0	\$162,500	\$288,800	\$451,300	113%	1965 & 2019

Address	Sold Price	Sold Date	Sold Ratio	Original Ratio	Sold Terms
<a href="#">3061 Pualei Circle 303</a>	\$502,750	09-05-2019	99%	99%	Cash

[3061 Pualei Circle 303](#) - MLS#: [201918444](#) - Amazing find in Pualei Circle neighborhood! Nestled at the foot of Diamond Head within minutes to the beaches, shopping and nightlife of Waikiki as well Kapiolani Park. Beautiful upgrades with a smart design taking advantage of the trade winds and views. Marvel at the panoramic mountain views over the tree tops of Pualei Circle. Quality renovations include hardwood floors throughout, granite counter tops, built in combo washer/dryer and enclosed lanai create a spacious home with lots of light. One covered parking and pet friendly are added bonuses of this home at the Diamond Head Plaza in this special neighborhood. **Region:** Diamond Head **Neighborhood:** Diamond Head **Condition:** Excellent **Parking:** Covered - 1, Street **Total Parking:** 1 **View:** City, Mountain **Frontage:** Other **Pool:** **Zoning:** 12 - A-2 Medium Density Apartme **Sale Conditions:** None **Schools:** [Waikiki](#), [Kaimuki](#), [Kalani](#) \* [Request Showing](#), [Photos](#), [History](#), [Maps](#), [Deed](#), [Watch List](#), [Tax Info](#)

DOM = Days on Market, Occ. = Occupancy, FL = Floor Number