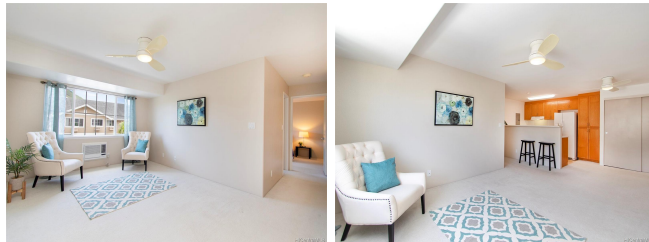


**Lalea At Hawaii Kai Iii 7156 Hawaii Kai Drive Unit 211, Honolulu 96825 \* Lalea At Hawaii Kai Iii \* \$595,000 \* Originally \$608,000**

Sold Price: \$588,000	Sold Date: 10-29-2019	Sold Ratio: 99%
Beds: <b>2</b>	MLS#: <b>201921403, FS</b>	Year Built: <b>1998</b>
Bath: <b>1/0</b>	Status: <b>Sold</b>	Remodeled:
Living Sq. Ft.: <b>850</b>	List Date & DOM: <b>07-25-2019 &amp; 53</b>	Total Parking: <b>2</b>
Land Sq. Ft.: <b>0</b>	Condition: <b>Above Average</b>	<a href="#">Assessed Value</a>
Lanai Sq. Ft.: <b>0</b>	Frontage:	Building: <b>\$272,500</b>
Sq. Ft. Other: <b>0</b>	Tax/Year: <b>\$166/2019</b>	Land: <b>\$336,300</b>
Total Sq. Ft. <b>850</b>	Neighborhood: <b>West Marina</b>	Total: <b>\$608,800</b>
Maint./Assoc. <b>\$334 / \$0</b>	<a href="#">Flood Zone</a> : <b>Zone D - Tool</b>	Stories / CPR: <b>Two / No</b>
Parking: <b>Assigned, Open - 2</b>	Frontage:	
<a href="#">Zoning</a> : <b>12 - A-2 Medium Density Apartme</b>	View: <b>None, Mountain</b>	

**Public Remarks:** Lovely 2 bedroom townhouse in desirable Lalea at Hawaii Kai. Nestled between a grassy park with gazebo, pool with party room and gorgeous mountain views. This unit has 2 parking stalls, AC units throughout, fresh paint, open concept kitchen, large bathroom and more. Enjoy the conveniences of being close to beaches, theaters, restaurants and shopping. This complex is pet friendly. Tax assessed values are from 2019, property taxes are from 2018 **Sale Conditions:** None **Schools:** [Hahaione](#), [Niu Valley](#), [Kaiser](#) \* [Request Showing](#), [Photos](#), [History](#), [Maps](#), [Deed](#), [Watch List](#), [Tax Info](#)



Address	Price	Bd & Bth	Living / Avg.	Land   Avg.	Lanai	Occ.	FL	DOM
<a href="#">7156 Hawaii Kai Drive 211</a>	<b>\$595,000</b>	2 & 1/0	850   \$700	0   \$inf	0	73%	2	53

Address	Tax   Maint.   Ass.	Assessed Land	Assessed Building	Assessed Total	Ratio	Year & Remodeled
<a href="#">7156 Hawaii Kai Drive 211</a>	\$166   \$334   \$0	\$336,300	\$272,500	\$608,800	98%	1998 & NA

Address	Sold Price	Sold Date	Sold Ratio	Original Ratio	Sold Terms
<a href="#">7156 Hawaii Kai Drive 211</a>	\$588,000	10-29-2019	99%	97%	Conventional

[7156 Hawaii Kai Drive 211](#) - MLS#: **201921403** - Original price was \$608,000 - Lovely 2 bedroom townhouse in desirable Lalea at Hawaii Kai. Nestled between a grassy park with gazebo, pool with party room and gorgeous mountain views. This unit has 2 parking stalls, AC units throughout, fresh paint, open concept kitchen, large bathroom and more. Enjoy the conveniences of being close to beaches, theaters, restaurants and shopping. This complex is pet friendly. Tax assessed values are from 2019, property taxes are from 2018 **Region:** Hawaii Kai **Neighborhood:** West Marina **Condition:** Above Average **Parking:** Assigned, Open - 2 **Total Parking:** 2 **View:** None, Mountain **Frontage:** **Pool:** **Zoning:** 12 - A-2 Medium Density Apartme **Sale Conditions:** None **Schools:** [Hahaione](#), [Niu Valley](#), [Kaiser](#) \* [Request Showing](#), [Photos](#), [History](#), [Maps](#), [Deed](#), [Watch List](#), [Tax Info](#)

DOM = Days on Market, Occ. = Occupancy, FL = Floor Number