

Pats At Punaluu 53-567 Kamehameha Highway Unit 314, Hauula 96717 * Pats At Punaluu *

\$385,000

Beds: **1**
Bath: **1/0**
Living Sq. Ft.: **726**
Land Sq. Ft.: **126,672**

MLS#: **201921872, FS**
Status: **Cancelled**
List Date & DOM: **07-31-2019 & 177**
Condition: **Excellent**

Year Built: **1975**
Remodeled:
Total Parking: **1**
[Assessed Value](#)

Lanai Sq. Ft.: **240**

Ocean, Sandy Beach, Waterfront
Frontage:

Building: **\$209,000**

Sq. Ft. Other: **0**

Tax/Year: **\$98/2018**

Land: **\$97,000**

Total Sq. Ft. **966**

Neighborhood: **Punaluu**

Total: **\$306,000**

Maint./Assoc. **\$873 / \$0**

[Flood Zone](#): **Zone AE - Tool**

Stories / CPR: **One / No**

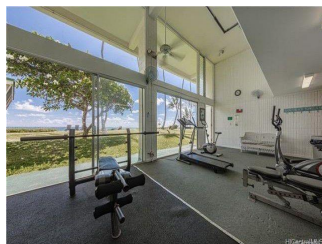
Parking: **Assigned, Open - 1**

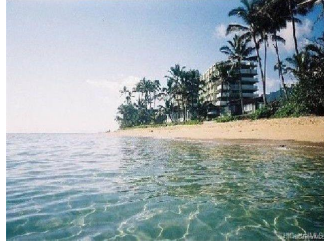
Frontage: **Ocean, Sandy Beach, Waterfront**

[Zoning](#): **12 - A-2 Medium Density Apartme**

View: **Mountain, Ocean, Sunrise**

Public Remarks: WOW! This incredible ocean condo is ready for you to move right in & enjoy the amazing sunrises from the lanai overlooking the crystal clear waters off this white sandy beach in Punaluu! Completely remodeled with the finest of taste, you will appreciate all the upgrades this condominium home has to offer! New AC is an added bonus! Newer high end appliances, granite countertops, flooring, remodeled bathroom etc.! There is a nice pool, BBQ area, little work out room, lounging area on the grass with tables & umbrellas to enjoy by the beach! 24 hr. Security & your own parking space! Swim, snorkel, kayak & fish right out front! Welcome to the Windward side Oahu which offers a variety of activities without the crowds! Close to shops and restaurants, Polynesian Cultural Center, BYU & More! **Sale Conditions:** None **Schools:** , , * [Request Showing](#), [Photos](#), [History](#), [Maps](#), [Deed](#), [Watch List](#), [Tax Info](#)





Address	Price	Bd & Bth	Living / Avg.	Land Avg.	Lanai	Occ.	FL	DOM
53-567 Kamehameha Highway 314	\$385,000	1 & 1/0	726 \$530	126,672 \$3	240	42%	3	177

Address	Tax Maint. Ass.	Assessed Land	Assessed Building	Assessed Total	Ratio	Year & Remodeled
53-567 Kamehameha Highway 314	\$98 \$873 \$0	\$97,000	\$209,000	\$306,000	126%	1975 & NA

[53-567 Kamehameha Highway 314](#) - MLS#: [201921872](#) - WOW! This incredible oceanfront condo is ready for you to move right in & enjoy the amazing sunrises from the lanai overlooking the crystal clear waters off this white sandy beach in Punaluu! Completely remodeled with the finest of taste, you will appreciate all the upgrades this condominium home has to offer! New AC is an added bonus! Newer high end appliances, granite countertops, flooring, remodeled bathroom etc.! There is a nice pool, BBQ area, little work out room, lounging area on the grass with tables & umbrellas to enjoy by the beach! 24 hr. Security & your own parking space! Swim, snorkel, kayak & fish right out front! Welcome to the Windward side Oahu which offers a variety of activities without the crowds! Close to shops and restaurants, Polynesian Cultural Center, BYU & More! **Region:** Kaneohe **Neighborhood:** Punaluu **Condition:** Excellent **Parking:** Assigned, Open - 1 **Total Parking:** 1 **View:** Mountain, Ocean, Sunrise **Frontage:** Ocean,Sandy Beach,Waterfront **Pool:** **Zoning:** 12 - A-2 Medium Density Apartme **Sale Conditions:** None **Schools:** , , * [Request Showing](#), [Photos](#), [History](#), [Maps](#), [Deed](#), [Watch List](#), [Tax Info](#)

DOM = Days on Market, Occ. = Occupancy, FL = Floor Number