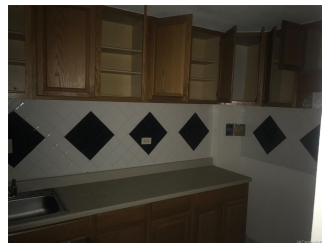


## Su Casa 94-245 Leowahine Street Unit 1012, Waipahu 96797 \* Su Casa \* \$203,500

Sold Price: \$188,443	Sold Date: 11-04-2019	Sold Ratio: 93%
Beds: <b>3</b>	MLS#: <b>201922928, FS</b>	Year Built: <b>1968</b>
Bath: <b>1/0</b>	Status: <b>Sold</b>	Remodeled:
Living Sq. Ft.: <b>799</b>	List Date & DOM: <b>08-13-2019 &amp; 22</b>	Total Parking: <b>1</b>
Land Sq. Ft.: <b>165,746</b>	Condition: <b>Fair, Needs Major Repair</b>	<a href="#">Assessed Value</a>
Lanai Sq. Ft.: <b>0</b>	Frontage:	Building: <b>\$118,800</b>
Sq. Ft. Other: <b>0</b>	Tax/Year: <b>\$68/2018</b>	Land: <b>\$115,800</b>
Total Sq. Ft. <b>799</b>	Neighborhood: <b>Waipahu-lower</b>	Total: <b>\$234,600</b>
Maint./Assoc. <b>\$410 / \$0</b>	<a href="#">Flood Zone</a> : <b>Zone D - Tool</b>	Stories / CPR: / <b>No</b>
Parking: <b>Open - 1</b>	Frontage:	
<a href="#">Zoning</a> : <b>12 - A-2 Medium Density Apartme</b>	View: <b>None</b>	

**Public Remarks:** Great value on this fixer-upper starter home or investment property in the heart of Waipahu. Gated building. PRICED TO SELL! Ground Floor 3 bedroom, 1 bathroom condo, no stairs to walk up. Approximately 799 square feet with 1 parking space. Walking distance to the new rail system, stores, churches, and bus stop. Near freeway access. Vacant and easy to show with no notice. Make your offer today **Sale Conditions:** Lender Sale **Schools:** , , \* [Request Showing](#), [Photos](#), [History](#), [Maps](#), [Deed](#), [Watch List](#), [Tax Info](#)



Address	Price	Bd & Bth	Living / Avg.	Land   Avg.	Lanai	Occ.	FL	DOM
<a href="#">94-245 Leowahine Street 1012</a>	<a href="#">\$203,500</a>	3 & 1/0	799   \$255	165,746   \$1	0	52%	1	22

Address	Tax   Maint.   Ass.	Assessed Land	Assessed Building	Assessed Total	Ratio	Year & Remodeled
<a href="#">94-245 Leowahine Street 1012</a>	\$68   \$410   \$0	\$115,800	\$118,800	\$234,600	87%	1968 & NA

Address	Sold Price	Sold Date	Sold Ratio	Original Ratio	Sold Terms
<a href="#">94-245 Leowahine Street 1012</a>	\$188,443	11-04-2019	93%	93%	Conventional

[94-245 Leowahine Street 1012](#) - MLS#: [201922928](#) - Great value on this fixer-upper starter home or investment property in the heart of Waipahu. Gated building. PRICED TO SELL! Ground Floor 3 bedroom, 1 bathroom condo, no stairs to walk up. Approximately 799 square feet with 1 parking space. Walking distance to the new rail system, stores, churches, and bus stop. Near freeway access. Vacant and easy to show with no notice. Make your offer today **Region:** Waipahu **Neighborhood:** Waipahu-lower **Condition:** Fair, Needs Major Repair **Parking:** Open - 1 **Total Parking:** 1 **View:** None **Frontage:** **Pool:** **Zoning:** 12 - A-2 Medium Density Apartme **Sale Conditions:** Lender Sale **Schools:** , , \* [Request Showing](#), [Photos](#), [History](#), [Maps](#), [Deed](#), [Watch List](#), [Tax Info](#)

DOM = Days on Market, Occ. = Occupancy, FL = Floor Number