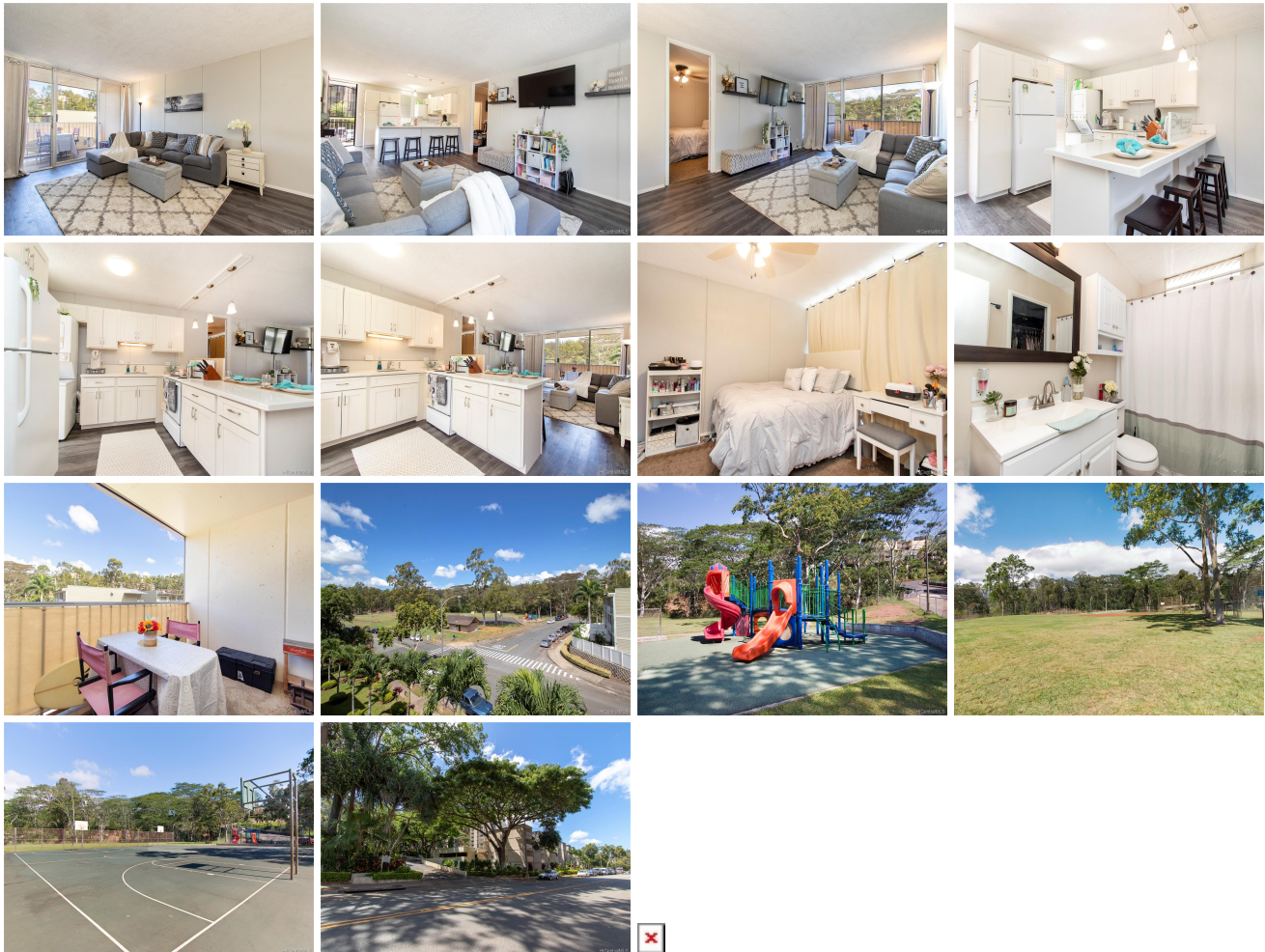


**Cathedral Pt-Melemanu 95-055 Waikalani Drive Unit H404, Mililani 96789 \* Cathedral Pt-Melemanu \* \$225,000**

Sold Price: \$230,000	Sold Date: 10-15-2019	Sold Ratio: 102%
Beds: <b>1</b>	MLS#: <b><u>201923551</u></b> , FS	Year Built: <b>1973</b>
Bath: <b>1/0</b>	Status: <b>Sold</b>	Remodeled:
Living Sq. Ft.: <b>607</b>	List Date & DOM: <b>08-21-2019 &amp; 13</b>	Total Parking: <b>1</b>
Land Sq. Ft.: <b>0</b>	Condition: <b>Excellent</b>	<a href="#">Assessed Value</a>
Lanai Sq. Ft.: <b>97</b>	Frontage: <b>Other</b>	Building: <b>\$103,300</b>
Sq. Ft. Other: <b>0</b>	Tax/Year: <b>\$25/2018</b>	Land: <b>\$74,600</b>
Total Sq. Ft. <b>704</b>	Neighborhood: <b>Waipio Acres-waikalani Woodlands</b>	Total: <b>\$177,900</b>
Maint./Assoc. <b>\$491 / \$0</b>	<a href="#">Flood Zone</a> : <b>Zone D - Tool</b>	Stories / CPR: <b>4-7 / No</b>
Parking: <b>Assigned, Open - 1</b>	Frontage: <b>Other</b>	
<a href="#">Zoning</a> : <b>11 - A-1 Low Density Apartment</b>	View: <b>None</b>	

**Public Remarks:** GORGEOUS, renovated condo in Mililani for under \$250K! This fantastic 1 bed/1 bath/1 parking condo is in IMMACULATE condition and features new luxury vinyl plank floors and new carpet in bedroom, renovated kitchen with quartz counters, upgraded bathroom with new vanity and refinished tub, walk-in closet, park views, in-unit washer/dryer and more! Take a dip in the pool and enjoy the nearby park with playground and basketball courts. Just minutes from Schofield, Mililani town and easy access to H2 Freeway. HURRY, BEFORE THIS ONE IS GONE! **Sale Conditions:** None **Schools:** [Kipapa](#), [Mililani](#), [Mililani](#) \* [Request Showing](#), [Photos](#), [History](#), [Maps](#), [Deed](#), [Watch List](#), [Tax Info](#)



Address	Price	Bd & Bth	Living / Avg.	Land   Avg.	Lanai	Occ.	FL	DOM
<a href="#">95-055 Waikalani Drive H404</a>	<a href="#">\$225,000</a>	1 & 1/0	607   \$371	0   \$inf	97	45%	4	13

Address	Tax   Maint.   Ass.	Assessed Land	Assessed Building	Assessed Total	Ratio	Year & Remodeled
<a href="#">95-055 Waikalani Drive H404</a>	\$25   \$491   \$0	\$74,600	\$103,300	\$177,900	126%	1973 & NA

Address	Sold Price	Sold Date	Sold Ratio	Original Ratio	Sold Terms
<a href="#">95-055 Waikalani Drive H404</a>	\$230,000	10-15-2019	102%	102%	Conventional

[95-055 Waikalani Drive H404](#) - MLS#: [201923551](#) - GORGEOUS, renovated condo in Mililani for under \$250K! This fantastic 1 bed/1 bath/1 parking condo is in IMMACULATE condition and features new luxury vinyl plank floors and new carpet in bedroom, renovated kitchen with quartz counters, upgraded bathroom with new vanity and refinished tub, walk-in closet, park views, in-unit washer/dryer and more! Take a dip in the pool and enjoy the nearby park with playground and basketball courts. Just minutes from Schofield, Mililani town and easy access to H2 Freeway. HURRY, BEFORE THIS ONE IS GONE!

**Region:** Central **Neighborhood:** Waipio Acres-waikalani Woodlands **Condition:** Excellent **Parking:** Assigned, Open - 1 **Total Parking:** 1 **View:** None **Frontage:** Other **Pool:** **Zoning:** 11 - A-1 Low Density Apartment **Sale Conditions:** None **Schools:** [Kipapa](#), [Mililani](#), [Mililani](#) \* [Request Showing](#), [Photos](#), [History](#), [Maps](#), [Deed](#), [Watch List](#), [Tax Info](#)

DOM = Days on Market, Occ. = Occupancy, FL = Floor Number