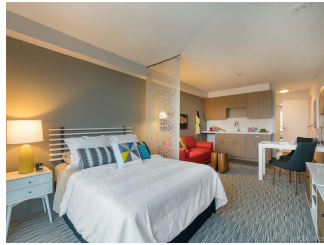


Hale Ka Lae 7000 Hawaii Kai Drive Unit 3708, Honolulu 96814 * Hale Ka Lae * \$728,500

| | | |
|---|---|--------------------------------|
| Sold Price: \$728,500 | Sold Date: 10-30-2019 | Sold Ratio: 100% |
| Beds: 3 | MLS#: 201925953, FS | Year Built: 2016 |
| Bath: 2/0 | Status: Sold | Remodeled: |
| Living Sq. Ft.: 1,145 | List Date & DOM: 10-27-2019 & 3 | Total Parking: 2 |
| Land Sq. Ft.: 0 | Condition: Excellent | Assessed Value |
| Lanai Sq. Ft.: 0 | Frontage: | Building: \$0 |
| Sq. Ft. Other: 0 | Tax/Year: \$0/2019 | Land: \$0 |
| Total Sq. Ft. 1,145 | Neighborhood: West Marina | Total: \$0 |
| Maint./Assoc. \$641 / \$0 | Flood Zone : Zone D - Tool | Stories / CPR: / No |
| Parking: Covered - 2 | Frontage: | |
| Zoning : 12 - A-2 Medium Density Apartme | View: Marina/Canal | |

Public Remarks: Uniquely designed FLEX UNIT! 3 rooms & 2 baths but the third room is a multi-purpose Den w/ closet. This unit offers an opportunity for multi-generational living. The unit comes with a master suite with a wet bar with the option of a separate entry in the foyer so that only the washer dryer & main entry is shared. Each of these suites has two mailboxes and two suite numbers, allowing their separate privacy. Hale Ka Lae puts residents comfortably at the hub of everything that matters in Hawaii Kai. Great school district being part of the International Baccalaureate Diploma Program. Perfect proximity to beaches, parks, waterways and hiking trails. Easy access to shopping malls, restaurants, and medical facilities. An even easier stroll to Costco next door! A must see! **Sale Conditions:** None **Schools:** [Hahaione](#), [Niu Valley](#), [Kaiser](#) * [Request Showing](#), [Photos](#), [History](#), [Maps](#), [Deed](#), [Watch List](#), [Tax Info](#)



| Address | Price | Bd & Bth | Living / Avg. | Land Avg. | Lanai | Occ. | FL | DOM |
|--|---------------------------|----------|---------------|-------------|-------|------|----|-----|
| 7000 Hawaii Kai Drive 3708 | \$728,500 | 3 & 2/0 | 1,145 \$636 | 0 \$inf | 0 | 0% | 7 | 3 |

| Address | Tax Maint. Ass. | Assessed Land | Assessed Building | Assessed Total | Ratio | Year & Remodeled |
|--|---------------------|---------------|-------------------|----------------|-------|------------------|
| 7000 Hawaii Kai Drive 3708 | \$0 \$641 \$0 | \$0 | \$0 | \$0 | inf% | 2016 & NA |

| Address | Sold Price | Sold Date | Sold Ratio | Original Ratio | Sold Terms |
|--|------------|------------|------------|----------------|------------|
| 7000 Hawaii Kai Drive 3708 | \$728,500 | 10-30-2019 | 100% | 100% | Other |

[7000 Hawaii Kai Drive 3708](#) - MLS#: [201925953](#) - Uniquely designed FLEX UNIT! 3 rooms & 2 baths but the third room is a multi-purpose Den w/ closet. This unit offers an opportunity for multi-generational living. The unit comes with a master suite with a wet bar with the option of a separate entry in the foyer so that only the washer dryer & main entry is shared. Each of these suites has two mailboxes and two suite numbers, allowing their separate privacy. Hale Ka Lae puts residents comfortably at the hub of everything that matters in Hawaii Kai. Great school district being part of the International Baccalaureate Diploma Program. Perfect proximity to beaches, parks, waterways and hiking trails. Easy access to shopping malls, restaurants, and medical facilities. An even easier stroll to Costco next door! A must see! **Region:** Hawaii Kai **Neighborhood:** West Marina **Condition:** Excellent **Parking:** Covered - 2 **Total Parking:** 2 **View:** Marina/Canal **Frontage:** **Pool:** **Zoning:** 12 - A-2 Medium Density Apartme **Sale Conditions:** None **Schools:** [Hahaione](#), [Niu Valley](#), [Kaiser](#) * [Request Showing](#), [Photos](#), [History](#), [Maps](#), [Deed](#), [Watch List](#), [Tax Info](#)

DOM = Days on Market, Occ. = Occupancy, FL = Floor Number