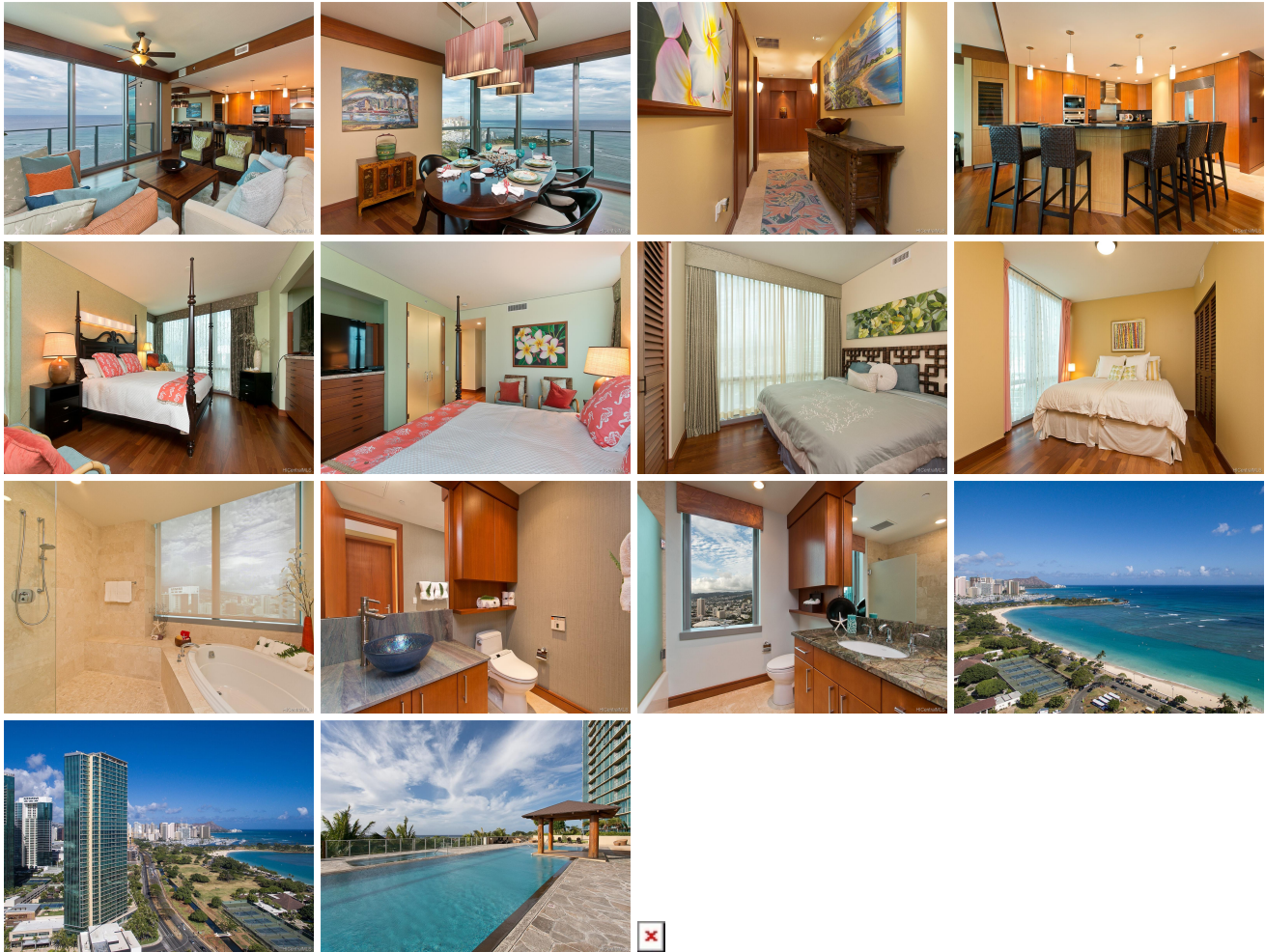


**Hokua At 1288 Ala Moana 1288 Ala Moana Boulevard Unit 38L, Honolulu 96814 \* Hokua At 1288 Ala Moana \* \$4,600,000 \* Originally \$4,950,000**

|   |   |                                |
|---|---|--------------------------------|
| Beds: <b>3</b>  | MLS#: <b>201926679, FS</b>  | Year Built: <b>2006</b>        |
| Bath: <b>2/1</b>  | Status: <b>Expired</b>  | Remodeled: <b>2009</b>         |
| Living Sq. Ft.: <b>2,222</b>  | List Date & DOM: <b>09-19-2019 &amp; 365</b>                            | Total Parking: <b>2</b>        |
| Land Sq. Ft.: <b>0</b>  | Condition: <b>Excellent</b>   | <a href="#">Assessed Value</a> |
| Lanai Sq. Ft.: <b>56</b>  | Frontage: <b>Ocean</b>  | Building: <b>\$4,259,100</b>   |
| Sq. Ft. Other: <b>0</b>   | Tax/Year: <b>\$3,360/2019</b>   | Land: <b>\$152,500</b>         |
| Total Sq. Ft. <b>2,278</b>  | Neighborhood: <b>Kakaako</b>  | Total: <b>\$4,411,600</b>      |
| Maint./Assoc. <b>\$2,016 / \$0</b>  | <a href="#">Flood Zone</a> : <b>Zone AE - Tool</b>                      | Stories / CPR: <b>21+ / No</b> |
| Parking: <b>Assigned, Covered - 2</b>                                       | Frontage: <b>Ocean</b>  |                                |
| <a href="#">Zoning</a> : <b>Kak - Kakaako Community Development Project</b> | View: <b>City, Diamond Head, Marina/Canal, Mountain, Ocean, Sunrise</b> |                                |

**Public Remarks:** Don't miss this opportunity to own this luxurious oceanfront 3 bedrooms Penthouse unit at Hokua known as the top amenities, the best concierge services. It's a Diamond Head side corner unit with breathtaking views of Diamond Head, Magic Island, Ocean and City. It's completely redesigned by award winner architect Richard Peterson, this unit features a gourmet kitchen, African mahogany paneling, Brazilian cherry hardwood floor, built-in closet system, automated window coverage and more! Be a owner and enjoy a Tropical Lifestyle in Paradise. **Sale Conditions:** None **Schools:** , , \* [Request Showing, Photos, History, Maps, Deed, Watch List, Tax Info](#)



| Address                                      | Price              | Bd & Bth | Living / Avg.   | Land   Avg. | Lanai | Occ. | FL | DOM |
|--|--------------------|----------|-----------------|-------------|-------|------|----|-----|
| <a href="#">1288 Ala Moana Boulevard 38L</a> | <b>\$4,600,000</b> | 3 & 2/1  | 2,222   \$2,070 | 0   \$inf   | 56    | 85%  | 38 | 365 |

| Address                                      | Tax   Maint.   Ass.     | Assessed Land | Assessed Building | Assessed Total | Ratio | Year & Remodeled |
|--|-------------------------|---------------|-------------------|----------------|-------|------------------|
| <a href="#">1288 Ala Moana Boulevard 38L</a> | \$3,360   \$2,016   \$0 | \$152,500     | \$4,259,100       | \$4,411,600    | 104%  | 2006 & 2009      |

[1288 Ala Moana Boulevard 38L](#) - MLS#: [201926679](#) - Original price was \$4,950,000 - Don't miss this opportunity to own this luxurious oceanfront 3 bedrooms Penthouse unit at Hokua known as the top amenities, the best concierge services. It's a Diamond Head side corner unit with breathtaking views of Diamond Head, Magic Island, Ocean and City. It's completely redesigned by award winner architect Richard Peterson, this unit features a gourmet kitchen, African mahogany paneling, Brazilian cherry hardwood floor, built-in closet system, automated window coverage and more! Be a owner and enjoy a Tropical Lifestyle in Paradise. **Region:** Metro **Neighborhood:** Kakaako **Condition:** Excellent **Parking:** Assigned, Covered - 2 **Total Parking:** 2 **View:** City, Diamond Head, Marina/Canal, Mountain, Ocean, Sunrise **Frontage:** Ocean **Pool:** **Zoning:** Kak - Kakaako Community Development Project **Sale Conditions:** None **Schools:** , , \* [Request Showing](#), [Photos](#), [History](#), [Maps](#), [Deed](#), [Watch List](#), [Tax Info](#)

DOM = Days on Market, Occ. = Occupancy, FL = Floor Number