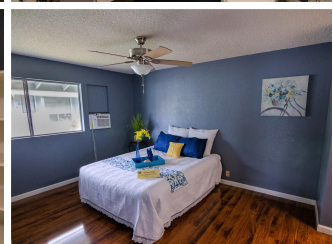
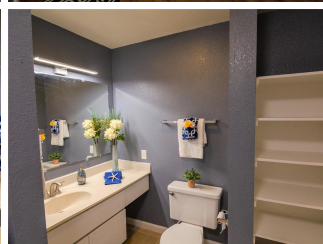
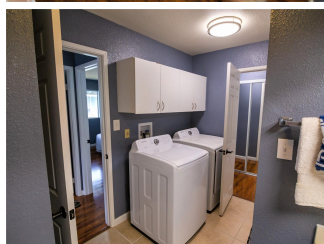
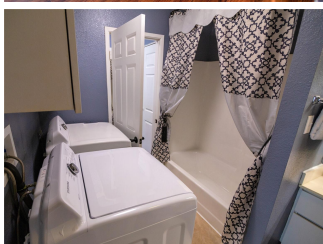
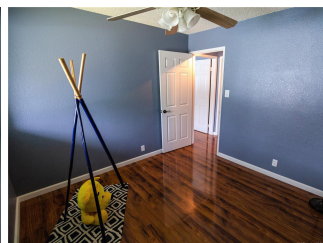
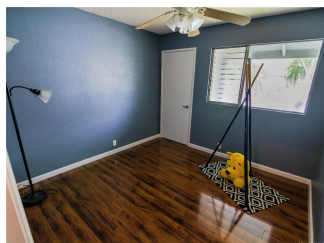
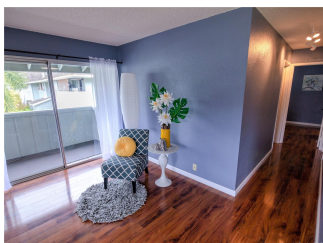
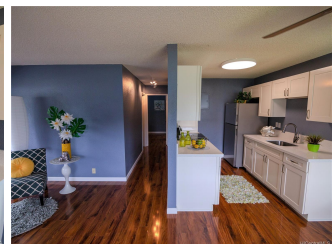


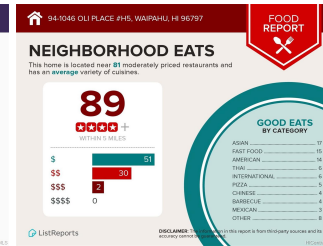
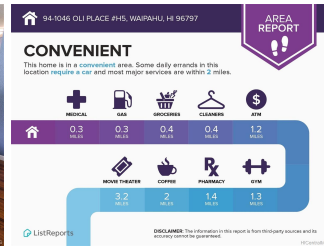
Kuola 1 - Rainbow Series 94-1046 Oli Place Unit H5, Waipahu 96797 * Kuola 1 - Rainbow

Series * \$380,000

Sold Price: \$378,248	Sold Date: 11-21-2019	Sold Ratio: 100%
Beds: 2	MLS#: <u>201927160</u>, FS	Year Built: 1983
Bath: 1/0	Status: Sold	Remodeled: 2019
Living Sq. Ft.: 750	List Date & DOM: 09-28-2019 & 9	Total Parking: 1
Land Sq. Ft.: 249,163	Condition: Excellent	Assessed Value
Lanai Sq. Ft.: 50	Frontage:	Building: \$199,100
Sq. Ft. Other: 0	Tax/Year: \$69/2019	Land: \$162,500
Total Sq. Ft. 800	Neighborhood: Waipio Gentry	Total: \$361,600
Maint./Assoc. \$420 / \$12	Flood Zone : Zone D - Tool	Stories / CPR: Two / No
Parking: Assigned, Guest	Frontage:	
Zoning : 11 - A-1 Low Density Apartment	View: Sunrise, Sunset	

Public Remarks: Amazing remodeled 2 bed/ 1 bath/ 1 parking townhouse at Kuola 1 in Waipio Gentry, conveniently located near Outback Steakhouse, Foodland, Waipio Shopping Center, with easy access H-2 freeway. Recent Updates include: Luxury Vinyl Tile flooring, paint with designer colors, kitchen cabinets, countertops, stainless steel appliances, fixtures. Washer/dryer in unit. Excellent 2nd floor corner location within well-maintained complex with beautiful landscaping and abundant visitor parking. Waipio Association membership includes access to Patsy T. Mink Regional Park, which includes a pool, tennis, basketball, baseball, and more. Pet Friendly and VA-approved. Ideal for first time home buyers or investors. First Open House this Sunday 10/6/19, 2-4PM. **Sale Conditions:** None **Schools:** [Kanoelani](#), [Highlands](#), [Pearl City](#) * [Request Showing](#), [Photos](#), [History](#), [Maps](#), [Deed](#), [Watch List](#), [Tax Info](#)





Address	Price	Bd & Bth	Living / Avg.	Land Avg.	Lanai	Occ.	FL	DOM
94-1046 Oli Place H5	\$380,000	2 & 1/0	750 \$507	249,163 \$2	50	53%	2	9

Address	Tax Maint. Ass.	Assessed Land	Assessed Building	Assessed Total	Ratio	Year & Remodeled
94-1046 Oli Place H5	\$69 \$420 \$12	\$162,500	\$199,100	\$361,600	105%	1983 & 2019

Address	Sold Price	Sold Date	Sold Ratio	Original Ratio	Sold Terms
94-1046 Oli Place H5	\$378,248	11-21-2019	100%	100%	Conventional 1000

[94-1046 Oli Place H5](#) - MLS#: [201927160](#) - Amazing remodeled 2 bed/ 1 bath/ 1 parking townhouse at Kuola 1 in Waipio Gentry, conveniently located near Outback Steakhouse, Foodland, Waipio Shopping Center, with easy access H-2 freeway. Recent Updates include: Luxury Vinyl Tile flooring, paint with designer colors, kitchen cabinets, countertops, stainless steel appliances, fixtures. Washer/dryer in unit. Excellent 2nd floor corner location within well-maintained complex with beautiful landscaping and abundant visitor parking. Waipio Association membership includes access to Patsy T. Mink Regional Park, which includes a pool, tennis, basketball, baseball, and more. Pet Friendly and VA-approved. Ideal for first time home buyers or investors. First Open House this Sunday 10/6/19, 2-4PM. **Region:** Waipahu **Neighborhood:** Waipio Gentry **Condition:** Excellent **Parking:** Assigned, Guest **Total Parking:** 1 **View:** Sunrise, Sunset **Frontage:** Pool: **Zoning:** 11 - A-1 Low Density Apartment **Sale Conditions:** None **Schools:** [Kanoelani](#), [Highlands](#), [Pearl City](#) * [Request Showing](#), [Photos](#), [History](#), [Maps](#), [Deed](#), [Watch List](#), [Tax Info](#)

DOM = Days on Market, Occ. = Occupancy, FL = Floor Number