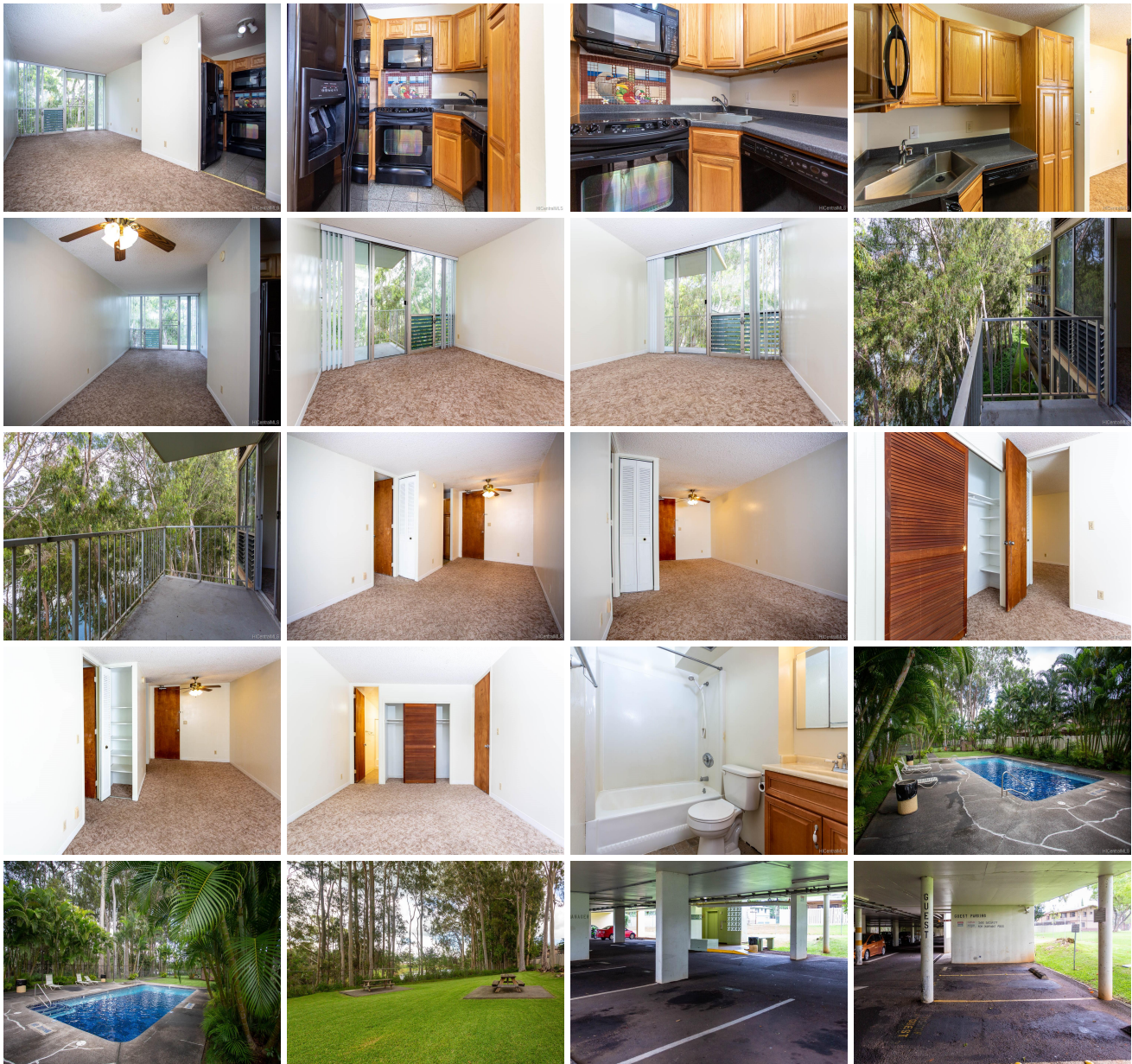


Woodwinds 1600 Wilikina Drive Unit C601, Wahiawa 96786 * Woodwinds * \$205,000 *

Originally \$220,000

Sold Price: \$200,000	Sold Date: 01-22-2020	Sold Ratio: 98%
Beds: 1	MLS#: <u>201927578</u>, FS	Year Built: 1974
Bath: 1/0	Status: Sold	Remodeled:
Living Sq. Ft.: 506	List Date & DOM: 10-10-2019 & 51	Total Parking: 1
Land Sq. Ft.: 110,599	Condition: Above Average	Assessed Value
Lanai Sq. Ft.: 75	Frontage: Lake/Pond	Building: \$145,100
Sq. Ft. Other: 0	Tax/Year: \$51/2018	Land: \$59,400
Total Sq. Ft. 581	Neighborhood: Wilikina	Total: \$204,500
Maint./Assoc. \$377 / \$0	Flood Zone : Zone D - Tool	Stories / CPR: One / No
Parking: Covered - 1, Guest	Frontage: Lake/Pond	
Zoning : 12 - A-2 Medium Density Apartme	View: None	

Public Remarks: "Price adjustment". Across from Schofield Barracks, on Lake Wilson - cozy one bedroom one bathroom condo overlooking the lake and surrounded by numerous mature trees. Great starter home or investment property. The unit comes with one assigned parking stall across from elevator. Entertain from the outside bbq area or jump in the pretty pool to cool off on a hot day! Catch and release from your back yard on the lake. Woodwinds location allows for quick access to Schofield, Wheeler, Kunia military bases and is maybe 15/20 minutes from North Shore beaches. Vacant & Easy to show! Open house October 20, 2019. **Sale Conditions:** None **Schools:** [Hale Kula](#), [Wheeler](#), [Leilehua](#) * [Request Showing](#), [Photos](#), [History](#), [Maps](#), [Deed](#), [Watch List](#), [Tax Info](#)





Address	Price	Bd & Bth	Living / Avg.	Land Avg.	Lanai	Occ.	FL	DOM
1600 Wilikina Drive C601	\$205,000	1 & 1/0	506 \$405	110,599 \$2	75	25%	6	51

Address	Tax Maint. Ass.	Assessed Land	Assessed Building	Assessed Total	Ratio	Year & Remodeled
1600 Wilikina Drive C601	\$51 \$377 \$0	\$59,400	\$145,100	\$204,500	100%	1974 & NA

Address	Sold Price	Sold Date	Sold Ratio	Original Ratio	Sold Terms
1600 Wilikina Drive C601	\$200,000	01-22-2020	98%	91%	Conventional

[1600 Wilikina Drive C601](#) - MLS#: [201927578](#) - Original price was \$220,000 - "Price adjustment". Across from Schofield Barracks, on Lake Wilson - cozy one bedroom one bathroom condo overlooking the lake and surrounded by numerous mature trees. Great starter home or investment property. The unit comes with one assigned parking stall across from elevator. Entertain from the outside bbq area or jump in the pretty pool to cool off on a hot day! Catch and release from your back yard on the lake. Woodwinds location allows for quick access to Schofield, Wheeler, Kunia military bases and is maybe 15/20 minutes from North Shore beaches. Vacant & Easy to show! Open house October 20, 2019. **Region:** Central **Neighborhood:** Wilikina **Condition:** Above Average **Parking:** Covered - 1, Guest **Total Parking:** 1 **View:** None **Frontage:** Lake/Pond **Pool:** **Zoning:** 12 - A-2 Medium Density Apartme **Sale Conditions:** None **Schools:** [Hale Kula](#), [Wheeler](#), [Leilehua](#)
 * [Request Showing](#), [Photos](#), [History](#), [Maps](#), [Deed](#), [Watch List](#), [Tax Info](#)

DOM = Days on Market, Occ. = Occupancy, FL = Floor Number