

Poha Kea Point 4 46-065 Konohiki Street Unit 3641, Kaneohe 96744 * Poha Kea Point 4 *

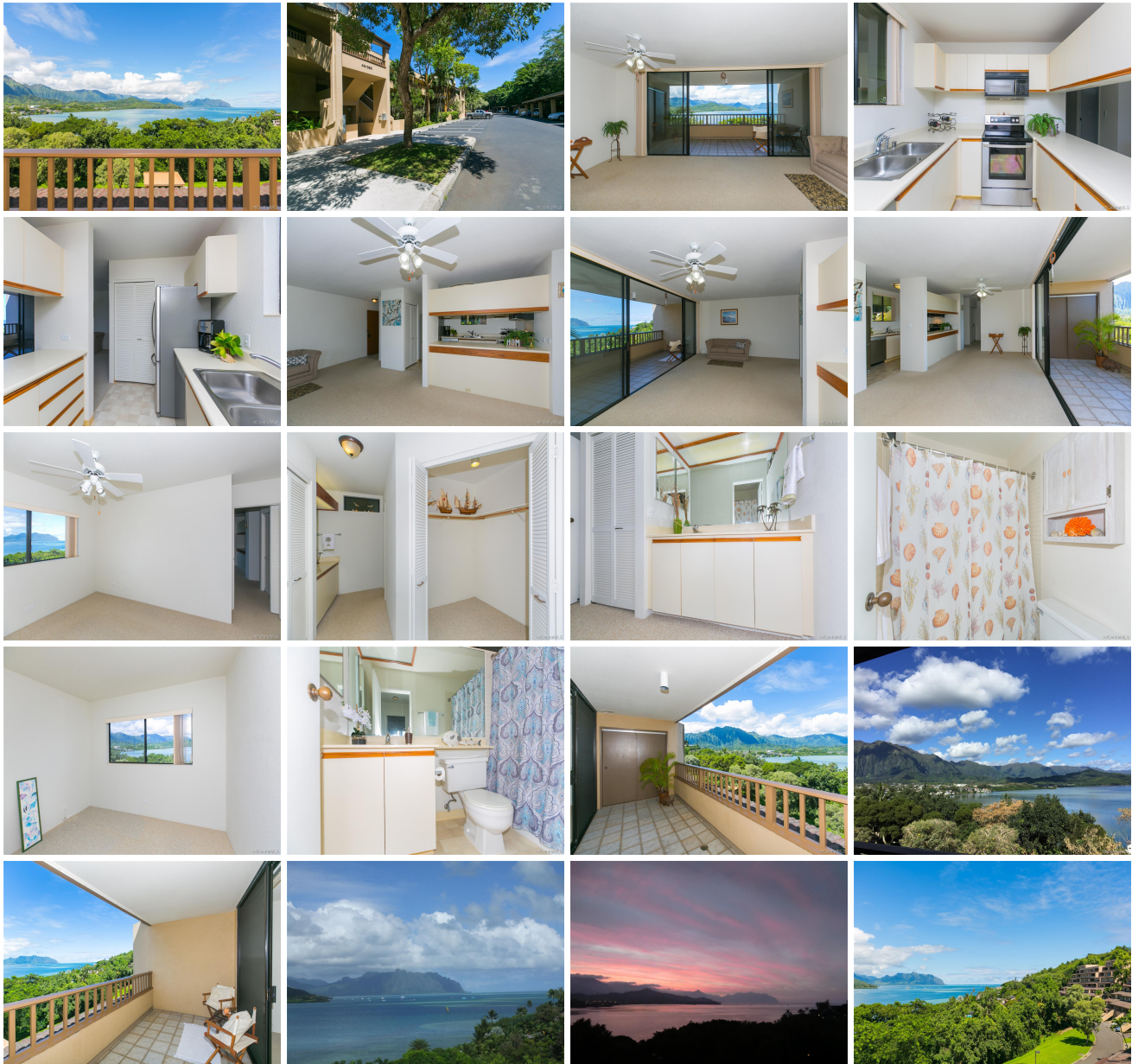
\$609,000

Sold Price: \$612,000	Sold Date: 11-19-2019	Sold Ratio: 100%
Beds: 2	MLS#: <u>201928765</u>, FS	Year Built: 1990
Bath: 2/0	Status: Sold	Remodeled:
Living Sq. Ft.: 871	List Date & DOM: 10-11-2019 & 10	Total Parking: 2
Land Sq. Ft.: 87,381	Condition: Excellent	Assessed Value
Lanai Sq. Ft.: 146	Frontage: Preservation	Building: \$452,500
Sq. Ft. Other: 0	Tax/Year: \$146/2019	Land: \$127,400
Total Sq. Ft. 1,017	Neighborhood: Lilipuna	Total: \$579,900
Maint./Assoc. \$295 / \$455	Flood Zone : Zone X - <u>Tool</u>	Stories / CPR: Three+ / No
Parking: Assigned, Covered - 1, Guest, Open - 1	Frontage: Preservation	

[Zoning](#): **03 - R10 - Residential District**

View: **Mountain, Ocean, Sunset**

Public Remarks: Must See!! Please come Sunday to public open house 10/13/2019, 2-5p. Rarely available, single level 2bd/2ba/2pk, Only One Step from parking stalls to front door that opens up to a direct unobstructed ocean and mountain view. Views from every room & sizable covered lanai. Move-in ready, well cared for condo featuring stainless steel kitchen appliances, and 2 assigned parking stalls. Desirable Poha Kea Point community offers resort-style living with pools, tennis courts, clubhouses, BBQ areas, walking/jogging paths, and more. Convenient to Windward Mall, shopping, restaurants, and H-3 freeway. **Sale Conditions:** None **Schools:** [Heeiea](#), [King](#), [Castle](#) * [Request Showing](#), [Photos](#), [History](#), [Maps](#), [Deed](#), [Watch List](#), [Tax Info](#)





Address	Price	Bd & Bth	Living / Avg.	Land Avg.	Lanai	Occ.	FL	DOM
46-065 Konohiki Street 3641	\$609,000	2 & 2/0	871 \$699	87,381 \$7	146	52%	1	10

Address	Tax Maint. Ass.	Assessed Land	Assessed Building	Assessed Total	Ratio	Year & Remodeled
46-065 Konohiki Street 3641	\$146 \$295 \$455	\$127,400	\$452,500	\$579,900	105%	1990 & NA

Address	Sold Price	Sold Date	Sold Ratio	Original Ratio	Sold Terms
46-065 Konohiki Street 3641	\$612,000	11-19-2019	100%	100%	Conventional

[46-065 Konohiki Street 3641](#) - MLS#: [201928765](#) - Must See!! Please come Sunday to public open house 10/13/2019, 2-5p. Rarely available, single level 2bd/2ba/2pk, Only One Step from parking stalls to front door that opens up to a direct unobstructed ocean and mountain view. Views from every room & sizable covered lanai. Move-in ready, well cared for condo featuring stainless steel kitchen appliances, and 2 assigned parking stalls. Desirable Poha Kea Point community offers resort-style living with pools, tennis courts, clubhouses, BBQ areas, walking/jogging paths, and more. Convenient to Windward Mall, shopping, restaurants, and H-3 freeway. **Region:** Kaneohe **Neighborhood:** Lilipuna **Condition:** Excellent **Parking:** Assigned, Covered - 1, Guest, Open - 1 **Total Parking:** 2 **View:** Mountain, Ocean, Sunset **Frontage:** Preservation **Pool:** **Zoning:** 03 - R10 - Residential District **Sale Conditions:** None **Schools:** [Heeiea](#), [King](#), [Castle](#) * [Request Showing](#), [Photos](#), [History](#), [Maps](#), [Deed](#), [Watch List](#), [Tax Info](#)

DOM = Days on Market, Occ. = Occupancy, FL = Floor Number