

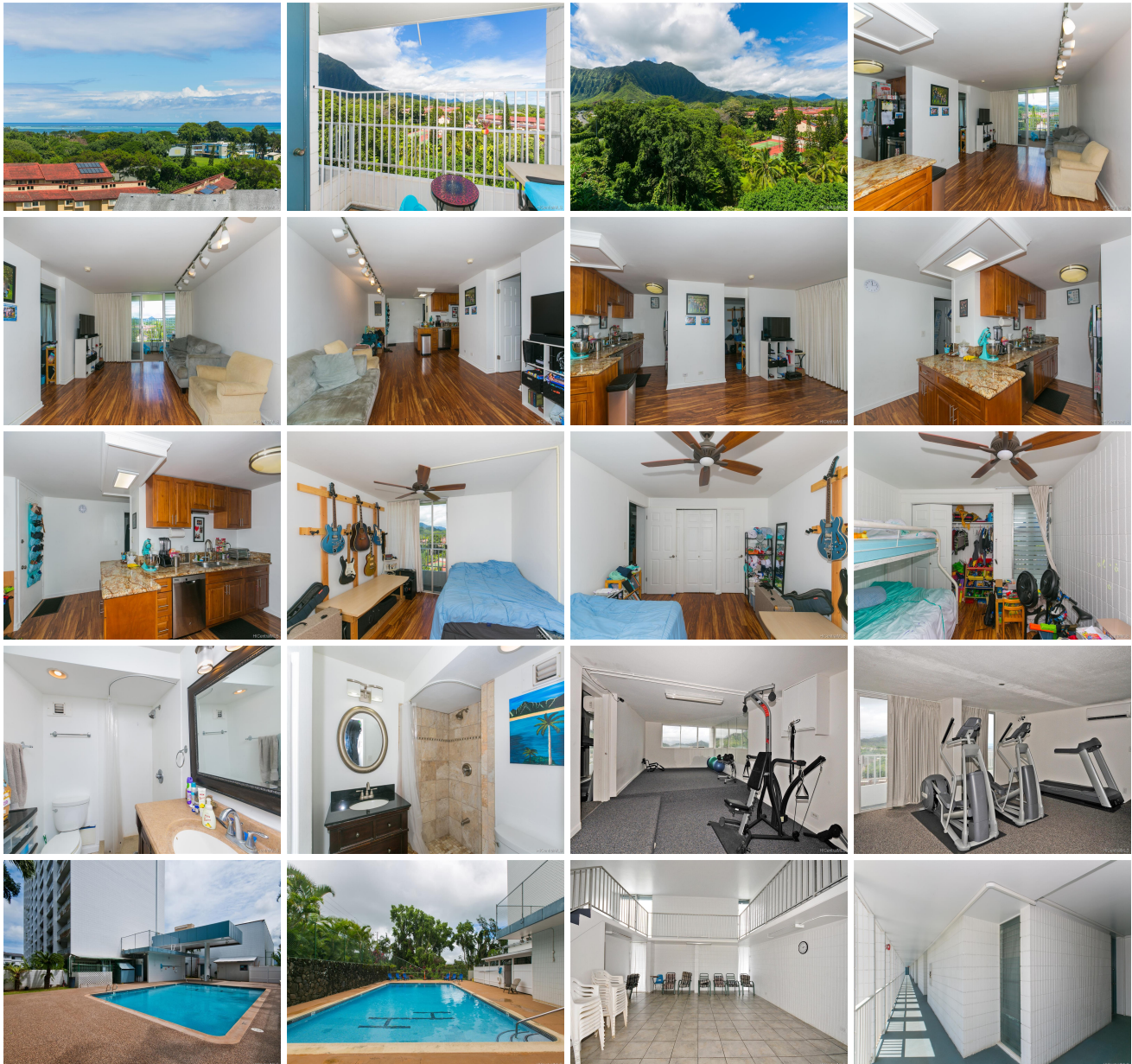
**Haiku Hale 46-283 Kahuhipa Street Unit C702, Kaneohe 96744 \* Haiku Hale \* \$434,000 \***

**Originally \$439,000**

Sold Price: \$433,000	Sold Date: 02-21-2020	Sold Ratio: 100%
Beds: <b>3</b>	MLS#: <b><u>201928986</u>, FS</b>	Year Built: <b>1976</b>
Bath: <b>2/0</b>	Status: <b>Sold</b>	Remodeled:
Living Sq. Ft.: <b>955</b>	List Date & DOM: <b>11-01-2019 &amp; 68</b>	Total Parking: <b>1</b>
Land Sq. Ft.: <b>108,987</b>	Condition: <b>Above Average</b>	<a href="#">Assessed Value</a>
Lanai Sq. Ft.: <b>50</b>	Frontage:	Building: <b>\$424,000</b>
Sq. Ft. Other: <b>0</b>	Tax/Year: <b>\$121/2018</b>	Land: <b>\$48,200</b>
Total Sq. Ft. <b>1,005</b>	Neighborhood: <b>Windward Estates</b>	Total: <b>\$472,200</b>
Maint./Assoc. <b>\$494 / \$0</b>	<a href="#">Flood Zone</a> : <b>Zone X - Tool</b>	Stories / CPR: / <b>No</b>
Parking: <b>Assigned, Covered - 1, Guest, Street</b>	Frontage:	
<a href="#">Zoning</a> : <b>12 - A-2 Medium Density Apartme</b>	View: <b>Garden, Mountain, Ocean</b>	

**Public Remarks:** An elegance of fine art with breathtaking views, and endless opportunities of a local lifestyle in this Haiku Hale condo unit. Awake to the humming of the cool breeze, or dine on your lanai while soaking in the gorgeous views of the Koolau Mountains. The local lifestyle of Hawaii is felt throughout Kaneohe with a perfect location near Windward Mall, Kaneohe District Park, shopping centers, fine dining, and much more. This unit features beautifully finished wooden kitchen cabinets, well maintained laminate flooring, and amenities to enjoy with your guests. A unit worth seeing, and living in. **Sale**

**Conditions:** None **Schools:** [Heeia](#), [King](#), [Castle](#) \* [Request Showing](#), [Photos](#), [History](#), [Maps](#), [Deed](#), [Watch List](#), [Tax Info](#)





Address	Price	Bd & Bth	Living / Avg.	Land   Avg.	Lanai	Occ.	FL	DOM
<a href="#">46-283 Kahuhipa Street C702</a>	<b>\$434,000</b>	3 & 2/0	955   \$454	108,987   \$4	50	57%	7	68

Address	Tax   Maint.   Ass.	Assessed Land	Assessed Building	Assessed Total	Ratio	Year & Remodeled
<a href="#">46-283 Kahuhipa Street C702</a>	\$121   \$494   \$0	\$48,200	\$424,000	\$472,200	92%	1976 & NA

Address	Sold Price	Sold Date	Sold Ratio	Original Ratio	Sold Terms
<a href="#">46-283 Kahuhipa Street C702</a>	\$433,000	02-21-2020	100%	99%	Conventional

<p><a href="#">46-283 Kahuhipa Street C702</a> - MLS#: <a href="#">201928986</a> - Original price was \$439,000 - An elegance of fine art with breathtaking views, and endless opportunities of a local lifestyle in this Haiku Hale condo unit. Awake to the humming of the cool breeze, or dine on your lanai while soaking in the gorgeous views of the Koolau Mountains. The local lifestyle of Hawaii is felt throughout Kaneohe with a perfect location near Windward Mall, Kaneohe District Park, shopping centers, fine dining, and much more. This unit features beautifully finished wooden kitchen cabinets, well maintained laminate flooring, and amenities to enjoy with your guests. A unit worth seeing, and living in. <b>Region:</b> Kaneohe <b>Neighborhood:</b> Windward Estates <b>Condition:</b> Above Average <b>Parking:</b> Assigned, Covered - 1, Guest, Street <b>Total Parking:</b> 1 <b>View:</b> Garden, Mountain, Ocean <b>Frontage:</b> Pool: <b>Zoning:</b> 12 - A-2 Medium Density Apartme <b>Sale Conditions:</b> None <b>Schools:</b> <a href="#">Heeia</a>, <a href="#">King</a>, <a href="#">Castle</a> * <a href="#">Request Showing</a>, <a href="#">Photos</a>, <a href="#">History</a>, <a href="#">Maps</a>, <a href="#">Deed</a>, <a href="#">Watch List</a>, <a href="#">Tax Info</a></p>					
--	--	--	--	--	--

DOM = Days on Market, Occ. = Occupancy, FL = Floor Number