

Pats At Punaluu 53-567 Kamehameha Highway Unit 311, Hauula 96717 * Pats At Punaluu *

\$335,000

Beds: **1**
Bath: **1/0**
Living Sq. Ft.: **726**
Land Sq. Ft.: **126,672**

MLS#: **201929276, FS**
Status: **Expired**
List Date & DOM: **10-11-2019 & 183**
Condition: **Above Average**

Year Built: **1975**
Remodeled:
Total Parking: **1**
[Assessed Value](#)

Lanai Sq. Ft.: **240**

Ocean, Sandy Beach, Waterfront
Frontage:

Building: **\$209,000**

Sq. Ft. Other: **0**
Total Sq. Ft. **966**
Maint./Assoc. **\$952 / \$0**
Parking: **Assigned**

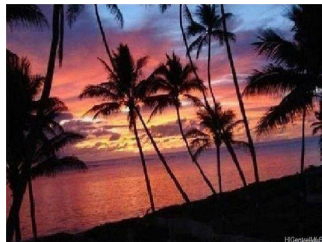
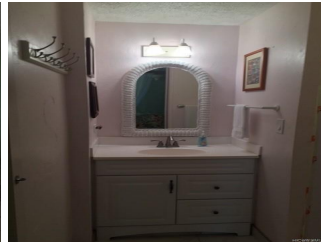
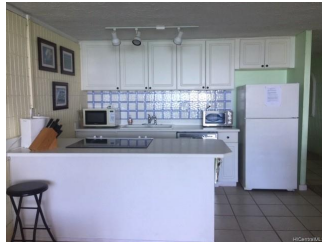
Tax/Year: **\$98/2018**
Neighborhood: **Punaluu**
[Flood Zone](#): **Zone AE - Tool**

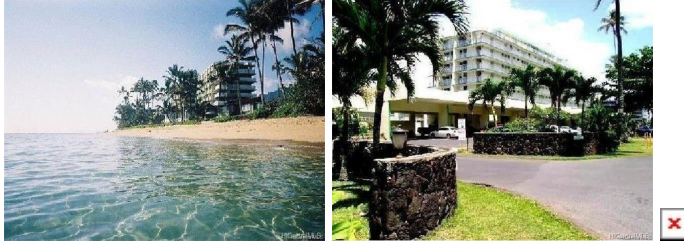
Land: **\$97,000**
Total: **\$306,000**
Stories / CPR: **One / No**

Frontage: **Ocean, Sandy Beach, Waterfront**
View: **Coastline, Mountain, Ocean, Sunset**

[Zoning](#): **12 - A-2 Medium Density Apartme**

Public Remarks: FEE SIMPLE CONDO ON AN INCREDIBLE SANDY BEACH! Beach living at it's finest! Can't beat the remarkable view & the ocean right out front is perfect for swimming, snorkeling, fishing & kayaking! Welcome home to this updated and remodeled 726sq ft 1 bedroom 1 bath unit w/ all appliances including washer/dryer! Look off your private lanai out at the ocean & enjoy amazing sunrises, watch turtles swim & whales jump! There's a nice pool, gym and BBQ/Picnic areas too! Comes w/ Your own assigned parking space, 24 hour security! Get away from the crowds of town and enjoy country living at it's finest! Close to beautiful North Shore beaches, Polynesian Cultural Center, Restaurants & Shops. See you at the beach!!! Don't miss this fantastic opportunity to own this FEE SIMPLE condo on the beach in Hawaii! **Sale Conditions:** None
Schools: , , * [Request Showing](#), [Photos](#), [History](#), [Maps](#), [Deed](#), [Watch List](#), [Tax Info](#)





Address	Price	Bd & Bth	Living / Avg.	Land Avg.	Lanai	Occ.	FL	DOM
53-567 Kamehameha Highway 311	\$335,000	1 & 1/0	726 \$461	126,672 \$3	240	42%	3	183

Address	Tax Maint. Ass.	Assessed Land	Assessed Building	Assessed Total	Ratio	Year & Remodeled
53-567 Kamehameha Highway 311	\$98 \$952 \$0	\$97,000	\$209,000	\$306,000	109%	1975 & NA

[53-567 Kamehameha Highway 311](#) - MLS#: [201929276](#) - FEE SIMPLE CONDO ON AN INCREDIBLE SANDY BEACH! Beach living at it's finest! Can't beat the remarkable view & the ocean right out front is perfect for swimming, snorkeling, fishing & kayaking! Welcome home to this updated and remodeled 726sq ft 1 bedroom 1 bath unit w/ all appliances including washer/dryer! Look off your private lanai out at the ocean & enjoy amazing sunrises, watch turtles swim & whales jump! There's a nice pool, gym and BBQ/Picnic areas too! Comes w/ Your own assigned parking space, 24 hour security! Get away from the crowds of town and enjoy country living at it's finest! Close to beautiful North Shore beaches, Polynesian Cultural Center, Restaurants & Shops. See you at the beach!!! Don't miss this fantastic opportunity to own this FEE SIMPLE condo on the beach in Hawaii! **Region:** Kaneohe **Neighborhood:** Punaluu **Condition:** Above Average **Parking:** Assigned **Total Parking:** 1 **View:** Coastline, Mountain, Ocean, Sunset **Frontage:** Ocean, Sandy Beach, Waterfront **Pool:** **Zoning:** 12 - A-2 Medium Density Apartme **Sale Conditions:** None **Schools:** , , * [Request Showing](#), [Photos](#), [History](#), [Maps](#), [Deed](#), [Watch List](#), [Tax Info](#)

DOM = Days on Market, Occ. = Occupancy, FL = Floor Number