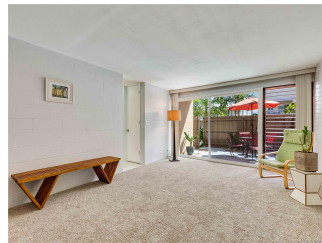


**Ono Vista 68-090 Au Street Unit 107E, Waialua 96791 \* Ono Vista \* \$339,000**

Sold Price: \$335,000      Sold Date: 12-02-2019      Sold Ratio: 99%  
 Beds: **1**      MLS#: **201929498, FS**      Year Built: **1975**  
 Bath: **1/0**      Status: **Sold**      Remodeled: **2019**  
 Living Sq. Ft.: **586**      List Date & DOM: **10-18-2019 & 10**      Total Parking: **1**  
 Land Sq. Ft.: **0**      Condition: **Excellent**      [Assessed Value](#)  
 Lanai Sq. Ft.: **250**      Frontage:      Building: **\$237,000**  
 Sq. Ft. Other: **0**      Tax/Year: **\$89/2019**      Land: **\$68,200**  
 Total Sq. Ft. **836**      Neighborhood: **Waialua**      Total: **\$305,200**  
 Maint./Assoc. **\$574 / \$0**      [Flood Zone](#): **Zone AE - Tool**      Stories / CPR: **One / No**  
 Parking: **Assigned, Open - 1, Street**      Frontage:  
 Zoning: **12 - A-2 Medium Density Apartme**      View: **Garden**

**Public Remarks:** The Ono Vista is located on the North Shore of Oahu in Waialua. This single level 1 bedroom apartment has been renovated top to bottom. New carpet, updated bathroom including tub, cabinets and tile, kitchen appliances, washer/dryer and more. Freshly painted and move-in ready. With the short distance to beach accesses and Aweoweo Beack Park, this is truly living at the beach. First floor unit has great outdoor living spaces with room for table, chairs, umbrella and more. Amenities include a sparking pool with party area nearby. Pets allowed, no limit on # or weight. Approx 3.5 miles to Haleiwa town and 11 miles to Pipeline (Ehukai Beach). Don't wait to move to the North Shore, winter waves are coming! **Sale Conditions:** None **Schools:** [Waialua](#), [Waialua](#), [Waialua](#) \* [Request Showing](#), [Photos](#), [History](#), [Maps](#), [Deed](#), [Watch List](#), [Tax Info](#)



| Address                               | Price                     | Bd & Bth | Living / Avg. | Land   Avg. | Lanai | Occ. | FL | DOM |
|---------------------------------------|---------------------------|----------|---------------|-------------|-------|------|----|-----|
| <a href="#">68-090 Au Street 107E</a> | <a href="#">\$339,000</a> | 1 & 1/0  | 586   \$578   | 0   \$inf   | 250   | 48%  | 1  | 10  |

| Address                               | Tax   Maint.   Ass. | Assessed Land | Assessed Building | Assessed Total | Ratio | Year & Remodeled |
|---------------------------------------|---------------------|---------------|-------------------|----------------|-------|------------------|
| <a href="#">68-090 Au Street 107E</a> | \$89   \$574   \$0  | \$68,200      | \$237,000         | \$305,200      | 111%  | 1975 & 2019      |

| Address                               | Sold Price | Sold Date  | Sold Ratio | Original Ratio | Sold Terms |
|---------------------------------------|------------|------------|------------|----------------|------------|
| <a href="#">68-090 Au Street 107E</a> | \$335,000  | 12-02-2019 | 99%        | 99%            | VA         |

[68-090 Au Street 107E](#) - MLS#: [201929498](#) - The Ono Vista is located on the North Shore of Oahu in Waialua. This single level 1 bedroom apartment has been renovated top to bottom. New carpet, updated bathroom including tub, cabinets and tile, kitchen appliances, washer/dryer and more. Freshly painted and move-in ready. With the short distance to beach accesses and Aweoweo Beack Park, this is truly living at the beach. First floor unit has great outdoor living spaces with room for table, chairs, umbrella and more. Amenities include a sparking pool with party area nearby. Pets allowed, no limit on # or weight. Approx 3.5 miles to Haleiwa town and 11 miles to Pipeline (Ehukai Beach). Don't wait to move to the North Shore, winter waves are coming! **Region:** North Shore **Neighborhood:** Waialua **Condition:** Excellent **Parking:** Assigned, Open - 1, Street **Total Parking:** 1 **View:** Garden **Frontage:** Pool: **Zoning:** 12 - A-2 Medium Density Apartme **Sale Conditions:** None **Schools:** [Waialua](#), [Waialua](#), [Waialua](#) \* [Request Showing](#), [Photos](#), [History](#), [Maps](#), [Deed](#), [Watch List](#), [Tax Info](#)

DOM = Days on Market, Occ. = Occupancy, FL = Floor Number