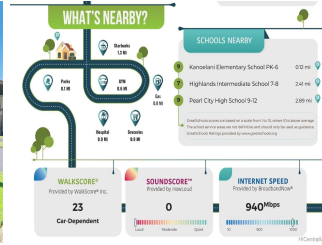


**Kauhale - Rainbow Series 94-1159 Mopua Loop Unit P7, Waipahu 96797 \* Kauhale - Rainbow Series \* \$364,500 \* Originally \$382,000**

Sold Price: \$362,000	Sold Date: 01-02-2020	Sold Ratio: 99%
Beds: <b>2</b>	MLS#: <b><u>201929525</u>, FS</b>	Year Built: <b>1981</b>
Bath: <b>1/0</b>	Status: <b>Sold</b>	Remodeled: <b>2019</b>
Living Sq. Ft.: <b>750</b>	List Date & DOM: <b>10-16-2019 &amp; 29</b>	Total Parking: <b>1</b>
Land Sq. Ft.: <b>210,525</b>	Condition: <b>Excellent</b>	<a href="#">Assessed Value</a>
Lanai Sq. Ft.: <b>0</b>	Frontage: <b>Other</b>	Building: <b>\$177,200</b>
Sq. Ft. Other: <b>0</b>	Tax/Year: <b>\$81/2019</b>	Land: <b>\$180,900</b>
Total Sq. Ft. <b>750</b>	Neighborhood: <b>Waipio Gentry</b>	Total: <b>\$358,100</b>
Maint./Assoc. <b>\$416 / \$0</b>	<a href="#">Flood Zone</a> : <b>Zone D - Tool</b>	Stories / CPR: <b>Two / No</b>
Parking: <b>Guest, Open - 1</b>	Frontage: <b>Other</b>	
<a href="#">Zoning</a> : <b>11 - A-1 Low Density Apartment</b>	View: <b>Diamond Head, Mountain, Sunrise, Sunset</b>	

**Public Remarks:** Beautifully remodeled with top-quality material condo unit, Window AC unit and ceiling fans, NO more Popcorn ceiling! Recessed lighting with dimmer switches in the kitchen, Bathroom has been outfitted with custom vanity and granite counter-top, brand new washer and dryer with new valve system. LED lighting has been installed throughout the home to give it a bright but cozy feel! Easy freeway and military base access. 2nd floor corner location within very well-maintained complex with beautiful landscaping, abundant visitor parking, and views of Diamond Head! One assigned stall close to the unit with possible option to rent another space. Living here you'll have access to Patsy T. Mink Regional Park, which has a pool, tennis, basketball, baseball, and many other nice facilities to entertain. **Sale Conditions:** None **Schools:** [Kanoelani](#), , \* [Request Showing](#), [Photos](#), [History](#), [Maps](#), [Deed](#), [Watch List](#), [Tax Info](#)





Address	Price	Bd & Bth	Living / Avg.	Land   Avg.	Lanai	Occ.	FL	DOM
<a href="#">94-1159 Mopua Loop P7</a>	<b>\$364,500</b>	2 & 1/0	750   \$486	210,525   \$2	0	65%	2	29

Address	Tax   Maint.   Ass.	Assessed Land	Assessed Building	Assessed Total	Ratio	Year & Remodeled
<a href="#">94-1159 Mopua Loop P7</a>	\$81   \$416   \$0	\$180,900	\$177,200	\$358,100	102%	1981 & 2019

Address	Sold Price	Sold Date	Sold Ratio	Original Ratio	Sold Terms
<a href="#">94-1159 Mopua Loop P7</a>	\$362,000	01-02-2020	99%	95%	Conventional

[94-1159 Mopua Loop P7](#) - MLS#: [201929525](#) - Original price was \$382,000 - Beautifully remodeled with top-quality material condo unit, Window AC unit and ceiling fans, NO more Popcorn ceiling! Recessed lighting with dimmer switches in the kitchen, Bathroom has been outfitted with custom vanity and granite counter-top, brand new washer and dryer with new valve system. LED lighting has been installed throughout the home to give it a bright but cozy feel! Easy freeway and military base access. 2nd floor corner location within very well-maintained complex with beautiful landscaping, abundant visitor parking, and views of Diamond Head! One assigned stall close to the unit with possible option to rent another space. Living here you'll have access to Patsy T. Mink Regional Park, which has a pool, tennis, basketball, baseball, and many other nice facilities to entertain. **Region:** Waipahu **Neighborhood:** Waipio Gentry **Condition:** Excellent **Parking:** Guest, Open - 1 **Total Parking:** 1 **View:** Diamond Head, Mountain, Sunrise, Sunset **Frontage:** Other **Pool:** Zoning: 11 - A-1 Low Density Apartment **Sale Conditions:** None **Schools:** [Kanoelani](#), , \* [Request Showing](#), [Photos](#), [History](#), [Maps](#), [Deed](#), [Watch List](#), [Tax Info](#)

DOM = Days on Market, Occ. = Occupancy, FL = Floor Number