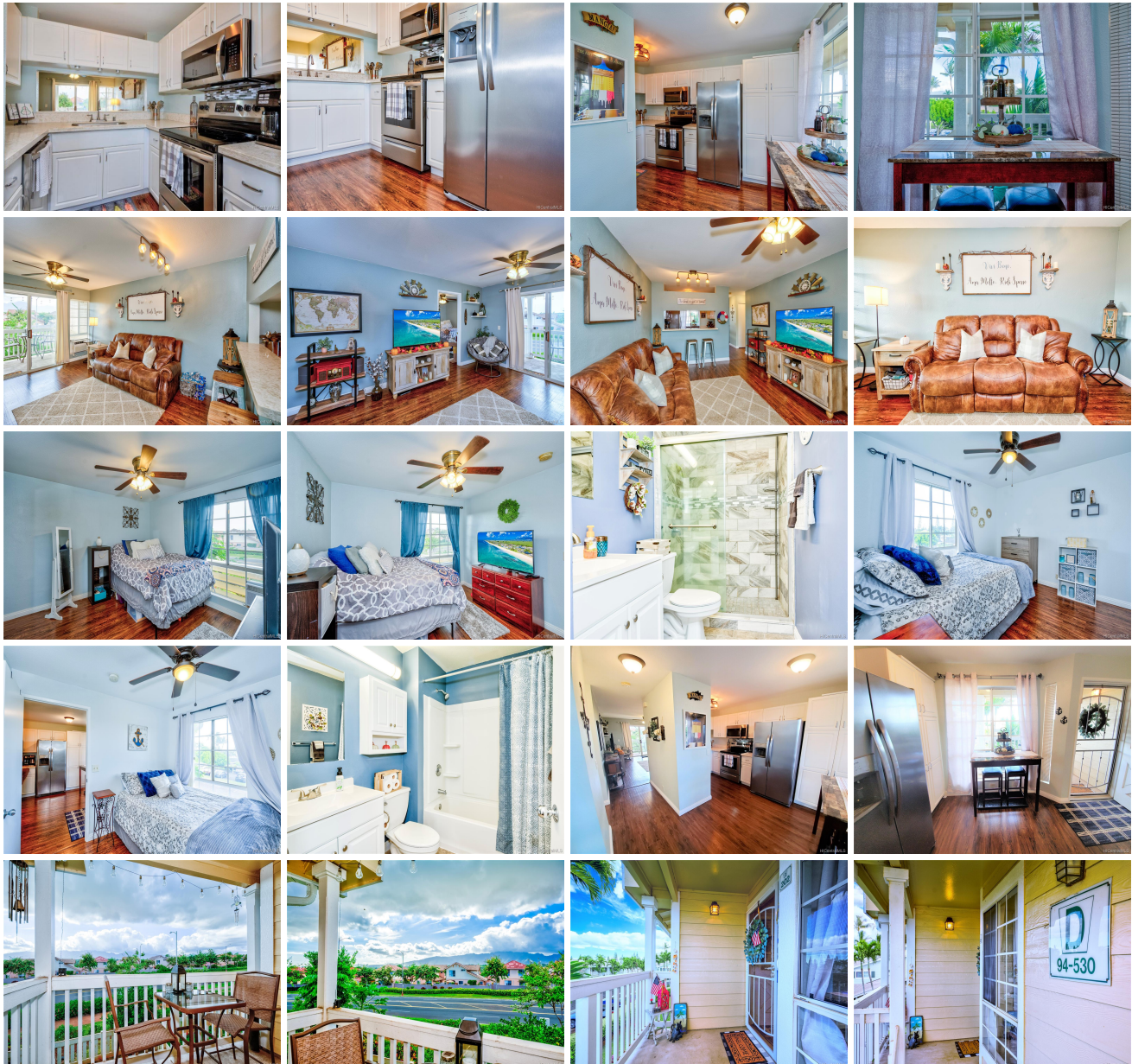


## **Highlands At Waikele 94-530 Lumiauau Street Unit D202, Waipahu 96797 \* Highlands At**

**Waikele \* \$465,000**

Sold Price: \$460,000	Sold Date: 03-03-2020	Sold Ratio: 99%
Beds: <b>2</b>	MLS#: <b><u>201929966</u>, FS</b>	Year Built: <b>1994</b>
Bath: <b>2/0</b>	Status: <b>Sold</b>	Remodeled: <b>2018</b>
Living Sq. Ft.: <b>791</b>	List Date & DOM: <b>11-03-2019 &amp; 47</b>	Total Parking: <b>2</b>
Land Sq. Ft.: <b>424,057</b>	Condition: <b>Excellent</b>	<a href="#">Assessed Value</a>
Lanai Sq. Ft.: <b>73</b>	Frontage:	Building: <b>\$104,200</b>
Sq. Ft. Other: <b>0</b>	Tax/Year: <b>\$108/2018</b>	Land: <b>\$345,300</b>
Total Sq. Ft. <b>864</b>	Neighborhood: <b>Waikele</b>	Total: <b>\$449,500</b>
Maint./Assoc. <b>\$469 / \$45</b>	<a href="#">Flood Zone</a> : <b>Zone D - Tool</b>	Stories / CPR: <b>Two / No</b>
Parking: <b>Assigned, Covered - 1, Open - 1</b>	Frontage:	
<a href="#">Zoning</a> : <b>05 - R-5 Residential District</b>	View: <b>Mountain</b>	

**Public Remarks:** Location! Location! Location! Beautifully renovated 2 bedroom, 2 bath, 2 parking townhome. This desirable unit is situated in the serene Highlands at Waikele! This unit features new laminate hardwood flooring, stainless steel appliances, and newly painted. Both bathrooms were newly upgraded. Enjoy the mountain views from the lanai. This unit is "Turn Key ready!" Centrally and conveniently located near Waikele Golf course, Premium Waikele Outlet stores, Lowes, UFC Gym, COSTCO, and New Safeway. Patsy Mink Oahu Central Reginal park is minutes away with numerous sport actives available for children and adults. Easy freeway access and close to military bases. Make this your NEW Home, hurry, this one won't last!! Schedule a tour today! Open House Saturday January 11th from 10-1pm, Sunday January 12 from 2-5pm. **Sale Conditions:** None **Schools:** [Waikele](#), [Waipahu](#), [Waipahu](#) \* [Request Showing](#), [Photos](#), [History](#), [Maps](#), [Deed](#), [Watch List](#), [Tax Info](#)





Address	Price	Bd & Bth	Living / Avg.	Land   Avg.	Lanai	Occ.	FL	DOM
<a href="#">94-530 Lumiauau Street D202</a>	<a href="#">\$465,000</a>	2 & 2/0	791   \$588	424,057   \$1	73	70%	2	47

Address	Tax   Maint.   Ass.	Assessed Land	Assessed Building	Assessed Total	Ratio	Year & Remodeled
<a href="#">94-530 Lumiauau Street D202</a>	\$108   \$469   \$45	\$345,300	\$104,200	\$449,500	103%	1994 & 2018

Address	Sold Price	Sold Date	Sold Ratio	Original Ratio	Sold Terms
<a href="#">94-530 Lumiauau Street D202</a>	\$460,000	03-03-2020	99%	99%	VA

[94-530 Lumiauau Street D202](#) - MLS#: [201929966](#) - Location! Location! Location! Beautifully renovated 2 bedroom, 2 bath, 2 parking townhome. This desirable unit is situated in the serene Highlands at Waikele! This unit features new laminate hardwood flooring, stainless steel appliances, and newly painted. Both bathrooms were newly upgraded. Enjoy the mountain views from the lanai. This unit is "Turn Key ready!" Centrally and conveniently located near Waikele Golf course, Premium Waikele Outlet stores, Lowes, UFC Gym, COSTCO, and New Safeway. Patsy Mink Oahu Central Reginal park is minutes away with numerous sport actives available for children and adults. Easy freeway access and close to military bases. Make this your NEW Home, hurry, this one won't last!! Schedule a tour today! Open House Saturday January 11th from 10-1pm, Sunday January 12 from 2-5pm. **Region:** Waipahu **Neighborhood:** Waikele **Condition:** Excellent **Parking:** Assigned, Covered - 1, Open - 1 **Total Parking:** 2 **View:** Mountain **Frontage:** **Pool:** **Zoning:** 05 - R-5 Residential District **Sale Conditions:** None **Schools:** [Waikele](#), [Waipahu](#), [Waipahu](#) \* [Request Showing](#), [Photos](#), [History](#), [Maps](#), [Deed](#), [Watch List](#), [Tax Info](#)

DOM = Days on Market, Occ. = Occupancy, FL = Floor Number