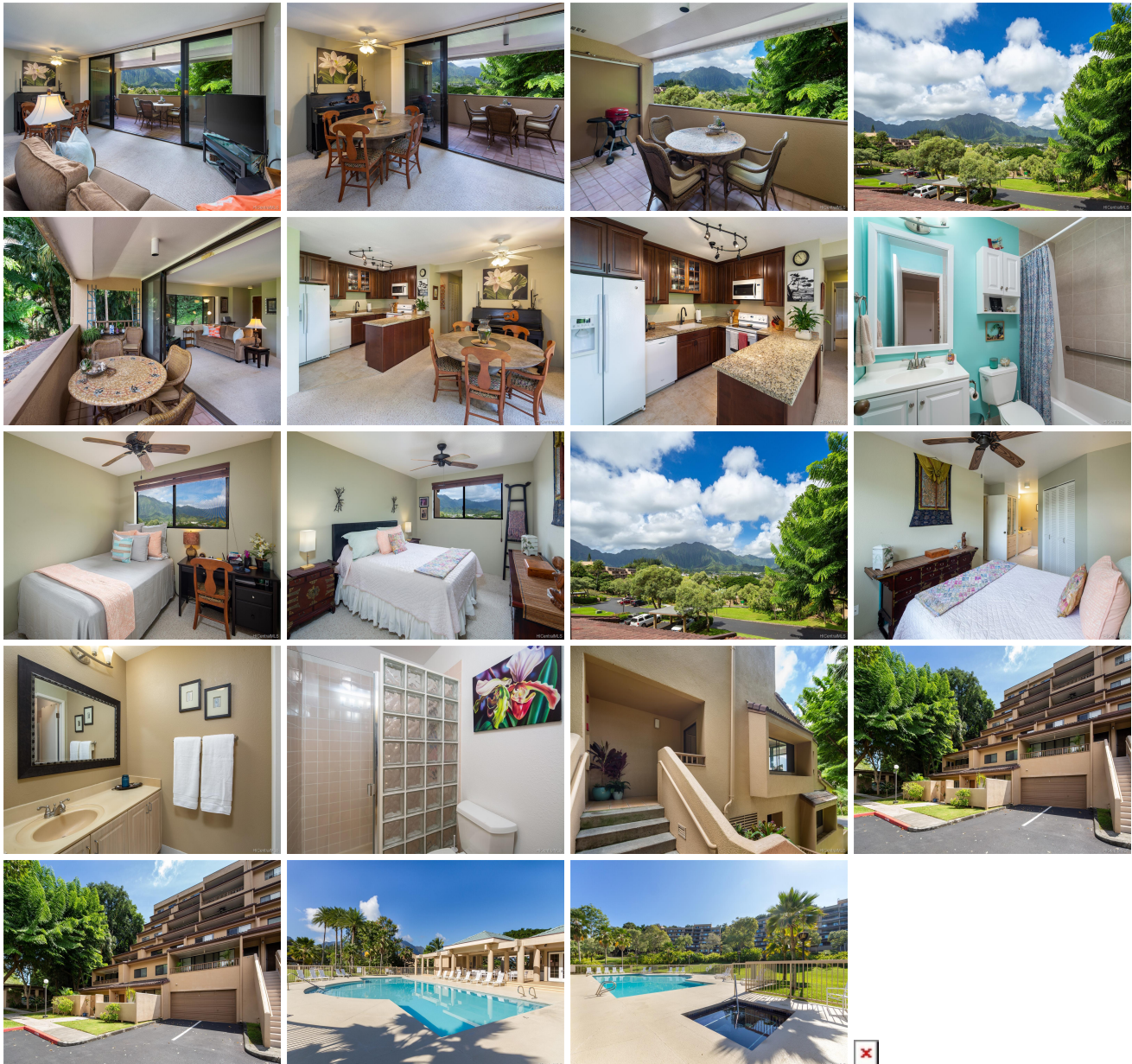


Poha Kea Point 3 46-090 Konohiki Street Unit 3421, Kaneohe 96744 * Poha Kea Point 3 *

\$599,000

Sold Price: \$595,000	Sold Date: 12-06-2019	Sold Ratio: 99%
Beds: 2	MLS#: <u>201930633</u> , FS	Year Built: 1989
Bath: 2/0	Status: Sold	Remodeled:
Living Sq. Ft.: 883	List Date & DOM: 11-01-2019 & 9	Total Parking: 2
Land Sq. Ft.: 669,517	Condition: Excellent	Assessed Value
Lanai Sq. Ft.: 146	Frontage: Other	Building: \$360,500
Sq. Ft. Other: 0	Tax/Year: \$150/2019	Land: \$221,400
Total Sq. Ft. 1,029	Neighborhood: Lilipuna	Total: \$581,900
Maint./Assoc. \$331 / \$455	Flood Zone : Zone X - Tool	Stories / CPR: One / No
Parking: Assigned, Garage, Guest, Open - 1, Tandem	Frontage: Other	
Zoning : 03 - R10 - Residential District	View: Garden, Mountain, Ocean	

Public Remarks: One of the most private units in the complex!! Remodeled, corner unit situated up a park-like pathway leading to your own entrance. Peaceful, quiet single level home w/gorgeous mountain & unique ocean views. Extra windows looking out to a backdrop of greenscape & nature, w/out a building to the side, feels like you're a world away from everyone. Placement of this home allows tradewinds to flow through-keeping the unit cool & breezy. Unit is protected from most of the afternoon sun & offers a garage (in prime location), washer/dryer in unit, large covered lanai w/extra storage. Pools, tennis courts, walking/jogging paths, clubhouses, koi ponds & so much more. Minutes to shopping, markets, dining plus easy access to military bases, freeways, bus & schools. Must see! **Sale Conditions:** None **Schools:** [Heeia](#), [King](#), [Castle](#) * [Request Showing](#), [Photos](#), [History](#), [Maps](#), [Deed](#), [Watch List](#), [Tax Info](#)



Address	Price	Bd & Bth	Living / Avg.	Land Avg.	Lanai	Occ.	FL	DOM
46-090 Konohiki Street 3421	\$599,000	2 & 2/0	883 \$678	669,517 \$1	146	55%	3	9

Address	Tax Maint. Ass.	Assessed Land	Assessed Building	Assessed Total	Ratio	Year & Remodeled
46-090 Konohiki Street 3421	\$150 \$331 \$455	\$221,400	\$360,500	\$581,900	103%	1989 & NA

Address	Sold Price	Sold Date	Sold Ratio	Original Ratio	Sold Terms
46-090 Konohiki Street 3421	\$595,000	12-06-2019	99%	99%	Conventional 0

[46-090 Konohiki Street 3421](#) - MLS#: [201930633](#) - One of the most private units in the complex!! Remodeled, corner unit situated up a park-like pathway leading to your own entrance. Peaceful, quiet single level home w/gorgeous mountain & unique ocean views. Extra windows looking out to a backdrop of greenscape & nature, w/out a building to the side, feels like you're a world away from everyone. Placement of this home allows tradewinds to flow through-keeping the unit cool & breezy. Unit is protected from most of the afternoon sun & offers a garage (in prime location), washer/dryer in unit, large covered lanai w/extra storage. Pools, tennis courts, walking/jogging paths, clubhouses, koi ponds & so much more. Minutes to shopping, markets, dining plus easy access to military bases, freeways, bus & schools. Must see! **Region:** Kaneohe **Neighborhood:** Lilipuna **Condition:** Excellent **Parking:** Assigned, Garage, Guest, Open - 1, Tandem **Total Parking:** 2 **View:** Garden, Mountain, Ocean **Frontage:** Other **Pool:** **Zoning:** 03 - R10 - Residential District **Sale Conditions:** None **Schools:** [Heeia](#), [King](#), [Castle](#) * [Request Showing](#), [Photos](#), [History](#), [Maps](#), [Deed](#), [Watch List](#), [Tax Info](#)

DOM = Days on Market, Occ. = Occupancy, FL = Floor Number