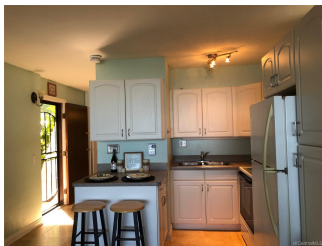


Makaua Village 51-636 Kamehameha Highway Unit 511, Kaaawa 96730 * Makaua Village *

\$385,000

Sold Price: \$375,000	Sold Date: 01-10-2020	Sold Ratio: 97%
Beds: 1	MLS#: <u>201930760</u>, FS	Year Built: 1973
Bath: 1/0	Status: Sold	Remodeled: 2011
Living Sq. Ft.: 620	List Date & DOM: 11-03-2019 & 17	Total Parking: 2
Land Sq. Ft.: 288,629	Condition: Excellent	Assessed Value
Lanai Sq. Ft.: 0	Frontage:	Building: \$75,500
Sq. Ft. Other: 0	Tax/Year: \$56/2019	Land: \$237,600
Total Sq. Ft. 620	Neighborhood: Kaaawa	Total: \$313,100
Maint./Assoc. \$581 / \$0	Flood Zone : Zone X - Tool	Stories / CPR: One / No
Parking: Assigned, Guest, Open - 2	Frontage:	
Zoning : 05 - R-5 Residential District	View: Coastline, Garden, Mountain, Ocean	

Public Remarks: WOW! Your chance to own this amazing 1 bedroom 1 bath highly upgraded apt. with unobstructed ocean view with TWO (2) assigned parking spaces! Welcoming Pet Friendly community (no weight limits). Ground Floor Corner apt means NO stairs! Travertine flooring, Washer/Dryer, A/C in bedroom. Beautiful landscaping, Heated Pool and BBQ area are less than 2 min walk from your front door. Historic Kahana Bay just a min drive to the left and Kualoa Ranch (of Jussasic Park fame) to the right. Swim, fish, hike or stroll on the beaches in this gorgeous coastal area and enjoy spectacular mountain views Windward Mall only 20 min drive. Kailua 30 min, Waikiki, Honolulu and International Airport 45 min away. Invest in your own slice of paradise in this well managed boutique complex called Makaua Village! **Sale Conditions:** None **Schools:** [Kaaawa](#), [Kahuku](#), [Kahuku](#) * [Request Showing](#), [Photos](#), [History](#), [Maps](#), [Deed](#), [Watch List](#), [Tax Info](#)



Address	Price	Bd & Bth	Living / Avg.	Land Avg.	Lanai	Occ.	FL	DOM
51-636 Kamehameha Highway 511	\$385,000	1 & 1/0	620 \$621	288,629 \$1	0	53%	1	17

Address	Tax Maint. Ass.	Assessed Land	Assessed Building	Assessed Total	Ratio	Year & Remodeled
51-636 Kamehameha Highway 511	\$56 \$581 \$0	\$237,600	\$75,500	\$313,100	123%	1973 & 2011

Address	Sold Price	Sold Date	Sold Ratio	Original Ratio	Sold Terms
51-636 Kamehameha Highway 511	\$375,000	01-10-2020	97%	97%	Cash

[51-636 Kamehameha Highway 511](#) - MLS#: [201930760](#) - WOW! Your chance to own this amazing 1 bedroom 1 bath highly upgraded apt. with unobstructed ocean view with TWO (2) assigned parking spaces! Welcoming Pet Friendly community (no weight limits). Ground Floor Corner apt means NO stairs! Travertine flooring, Washer/Dryer, A/C in bedroom. Beautiful landscaping, Heated Pool and BBQ area are less than 2 min walk from your front door. Historic Kahana Bay just a min drive to the left and Kualoa Ranch (of Jussasic Park fame) to the right. Swim, fish, hike or stroll on the beaches in this gorgeous coastal area and enjoy spectacular mountain views Windward Mall only 20 min drive. Kailua 30 min, Waikiki, Honolulu and International Airport 45 min away. Invest in your own slice of paradise in this well managed boutique complex called Makaua Village! **Region:** Kaneohe **Neighborhood:** Kaaawa **Condition:** Excellent **Parking:** Assigned, Guest, Open - 2 **Total Parking:** 2 **View:** Coastline, Garden, Mountain, Ocean **Frontage:** **Pool:** **Zoning:** 05 - R-5 Residential District **Sale Conditions:** None **Schools:** [Kaaawa](#), [Kahuku](#), [Kahuku](#) * [Request Showing](#), [Photos](#), [History](#), [Maps](#), [Deed](#), [Watch List](#), [Tax Info](#)

DOM = Days on Market, Occ. = Occupancy, FL = Floor Number