

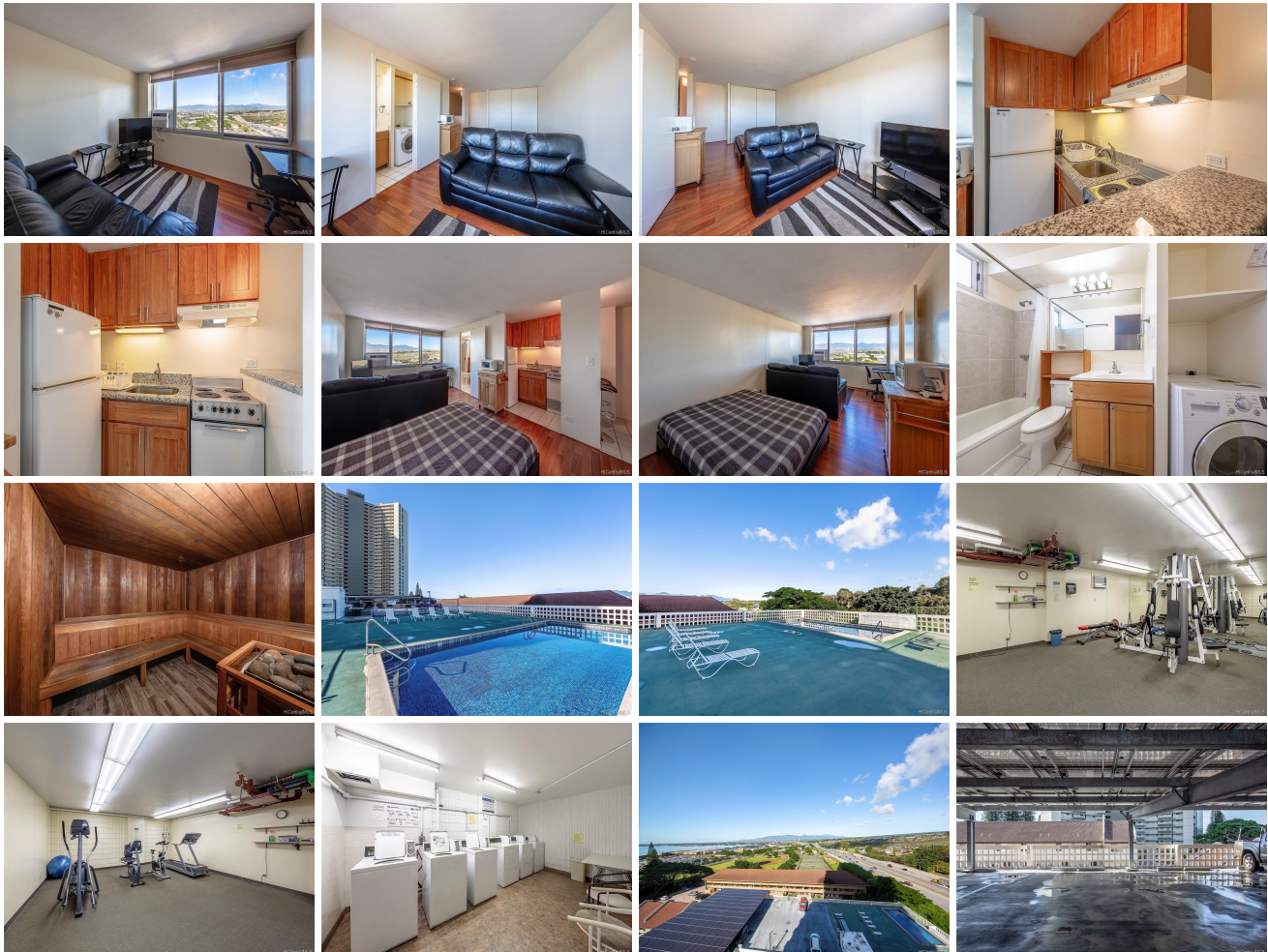
## **Pearlridge Square 98-288 Kaonohi Street Unit 1008, Aiea 96701 \* Pearlridge Square \***

**\$228,000**

|   |  |                                |
|---|--|--------------------------------|
| Sold Price: \$228,000   | Sold Date: 12-23-2019  | Sold Ratio: 100%               |
| Beds: <b>0</b>  | MLS#: <b>201931449, FS</b>                                     | Year Built: <b>1980</b>        |
| Bath: <b>1/0</b>  | Status: <b>Sold</b>  | Remodeled: <b>2014</b>         |
| Living Sq. Ft.: <b>360</b>                                      | List Date & DOM: <b>11-13-2019 &amp; 3</b>                     | Total Parking: <b>1</b>        |
| Land Sq. Ft.: <b>50,007</b>                                     | Condition: <b>Above Average, Excellent</b>                     | <a href="#">Assessed Value</a> |
| Lanai Sq. Ft.: <b>0</b>   | Frontage: <b>Other</b>   | Building: <b>\$211,800</b>     |
| Sq. Ft. Other: <b>0</b>   | Tax/Year: <b>\$67/2019</b>                                     | Land: <b>\$17,800</b>          |
| Total Sq. Ft. <b>360</b>  | Neighborhood: <b>Pearlridge</b>                                | Total: <b>\$229,600</b>        |
| Maint./Assoc. <b>\$299 / \$0</b>                                | <a href="#">Flood Zone</a> : <b>Zone X - Tool</b>              | Stories / CPR: / <b>No</b>     |
| Parking: <b>Assigned, Covered - 1, Street</b>                   | Frontage: <b>Other</b>   |                                |
| <a href="#">Zoning</a> : <b>12 - A-2 Medium Density Apartme</b> | View: <b>City, Coastline, Mountain, Ocean, Sunrise, Sunset</b> |                                |

**Public Remarks:** Excellent price and LOW maintenance fees in an exceptionally well-run building. This clean, upgraded studio can be the perfect entry into Hawaii's real estate for a first-time buyer or a smart investment for the seasoned investor. Furniture is included (bed, sofa, TV, and more). AC blows cold and the washer/dryer is in-unit. Maintenance fee includes water, digital cable, and high-speed internet. There's huge value here, as upgrades include granite countertops, renovated cabinetry, and no popcorn ceiling! Amenities include an exercise room, pool, a newly renovated sauna, building security and covered parking. Did we mention a bit of ocean view? Come see for yourself and make this your next real estate move! **Sale**

**Conditions:** None **Schools:** [Pearl Ridge](#), [Aiea](#), [Aiea](#) \* [Request Showing](#), [Photos](#), [History](#), [Maps](#), [Deed](#), [Watch List](#), [Tax Info](#)



| Address                                    | Price                     | Bd & Bth | Living / Avg. | Land   Avg.  | Lanai | Occ. | FL | DOM |
|--|---------------------------|----------|---------------|--------------|-------|------|----|-----|
| <a href="#">98-288 Kaonohi Street 1008</a> | <a href="#">\$228,000</a> | 0 & 1/0  | 360   \$633   | 50,007   \$5 | 0     | 29%  | 10 | 3   |

| Address | Tax   Maint.   Ass. | Assessed Land | Assessed Building | Assessed Total | Ratio | Year & Remodeled |
|---------|---------------------|---------------|-------------------|----------------|-------|------------------|
|---------|---------------------|---------------|-------------------|----------------|-------|------------------|

|  |                    |          |           |           |     |             |
|--|--------------------|----------|-----------|-----------|-----|-------------|
| <a href="#">98-288 Kaonohi Street 1008</a> | \$67   \$299   \$0 | \$17,800 | \$211,800 | \$229,600 | 99% | 1980 & 2014 |
|--|--------------------|----------|-----------|-----------|-----|-------------|

| Address                                    | Sold Price | Sold Date  | Sold Ratio | Original Ratio | Sold Terms   |
|--|------------|------------|------------|----------------|--------------|
| <a href="#">98-288 Kaonohi Street 1008</a> | \$228,000  | 12-23-2019 | 100%       | 100%           | Conventional |

|  |
|--|
| <p><a href="#">98-288 Kaonohi Street 1008</a> - MLS#: <a href="#">201931449</a> - Excellent price and LOW maintenance fees in an exceptionally well-run building. This clean, upgraded studio can be the perfect entry into Hawaii's real estate for a first-time buyer or a smart investment for the seasoned investor. Furniture is included (bed, sofa, TV, and more). AC blows cold and the washer/dryer is in-unit. Maintenance fee includes water, digital cable, and high-speed internet. There's huge value here, as upgrades include granite countertops, renovated cabinetry, and no popcorn ceiling! Amenities include an exercise room, pool, a newly renovated sauna, building security and covered parking. Did we mention a bit of ocean view? Come see for yourself and make this your next real estate move! <b>Region:</b> Pearl City <b>Neighborhood:</b> Pearlridge <b>Condition:</b> Above Average, Excellent <b>Parking:</b> Assigned, Covered - 1, Street <b>Total Parking:</b> 1 <b>View:</b> City, Coastline, Mountain, Ocean, Sunrise, Sunset <b>Frontage:</b> Other <b>Pool:</b> <b>Zoning:</b> 12 - A-2 Medium Density Apartme <b>Sale Conditions:</b> None <b>Schools:</b> <a href="#">Pearl Ridge</a>, <a href="#">Aiea</a>, <a href="#">Aiea</a> * <a href="#">Request Showing</a>, <a href="#">Photos</a>, <a href="#">History</a>, <a href="#">Maps</a>, <a href="#">Deed</a>, <a href="#">Watch List</a>, <a href="#">Tax Info</a></p> |
|--|

DOM = Days on Market, Occ. = Occupancy, FL = Floor Number