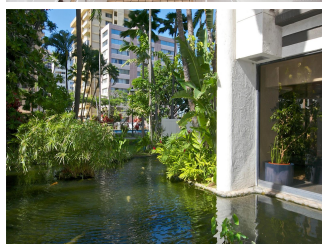
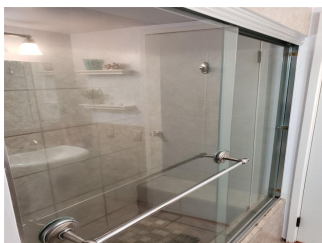
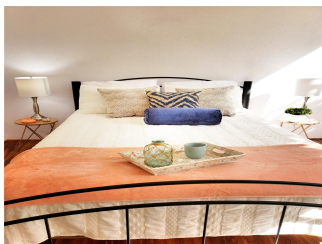
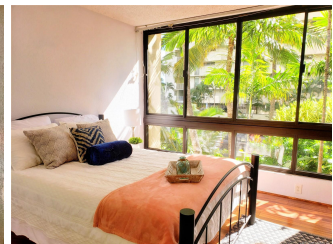


**Liliuokalani Gardens 300 Wai Nani Way Unit II/213, Honolulu 96815 \* Liliuokalani Gardens \***

**\$399,000**

Sold Price: \$391,000	Sold Date: 01-23-2020	Sold Ratio: 98%
Beds: <b>1</b>	MLS#: <b><u>201932549</u>, FS</b>	Year Built: <b>1984</b>
Bath: <b>1/0</b>	Status: <b>Sold</b>	Remodeled:
Living Sq. Ft.: <b>549</b>	List Date & DOM: <b>11-26-2019 &amp; 23</b>	Total Parking: <b>1</b>
Land Sq. Ft.: <b>119,659</b>	Condition: <b>Excellent</b>	<a href="#">Assessed Value</a>
Lanai Sq. Ft.: <b>0</b>	Frontage:	Building: <b>\$280,900</b>
Sq. Ft. Other: <b>0</b>	Tax/Year: <b>\$108/2019</b>	Land: <b>\$90,800</b>
Total Sq. Ft. <b>549</b>	Neighborhood: <b>Waikiki</b>	Total: <b>\$371,700</b>
Maint./Assoc. <b>\$552 / \$0</b>	<a href="#">Flood Zone</a> : <b>Zone AE - <a href="#">Tool</a></b>	Stories / CPR: <b>One / No</b>
Parking: <b>Covered - 1, Guest, Other</b>	Frontage:	
<a href="#">Zoning</a> : <b>X2 - Apartment Precinct</b>	View: <b>Garden, Golf Course, Mountain</b>	

**Public Remarks:** Stunning turnkey condo in resort-like Waikiki condo is definitely priced to sell! Walking distance to the beach and convenience of all Waikiki attractions, Kapiolani parks, diamond head, & Ala Wai golfing. Liliuokalani Gardens has impeccable landscaping, soothing waterways filled pool, hot tub, recreational/reserved private party rooms, meeting space, tennis courts, picnic/bbq areas, 24-hrs security, secured entry, and lots and lots of covered guests parkings. Unit had been renovated with beautiful pergo flooring, central AC, granite kitchen counters, and stainless steel appliances. Treetop views to set your sight outside and catch a glimpse of the Ala Wai golf course greens and waterways as well. Newer building with water sprinklers. Don't miss seeing this! **Sale Conditions:** None **Schools:** [Jefferson](#), [Washington](#), [Kaimuki](#) \* [Request Showing](#), [Photos](#), [History](#), [Maps](#), [Deed](#), [Watch List](#), [Tax Info](#)





Address	Price	Bd & Bth	Living / Avg.	Land   Avg.	Lanai	Occ.	FL	DOM
<a href="#">300 Wai Nani Way II/213</a>	<a href="#">\$399,000</a>	1 & 1/0	549   \$727	119,659   \$3	0	31%	2	23

Address	Tax   Maint.   Ass.	Assessed Land	Assessed Building	Assessed Total	Ratio	Year & Remodeled
<a href="#">300 Wai Nani Way II/213</a>	\$108   \$552   \$0	\$90,800	\$280,900	\$371,700	107%	1984 & NA

Address	Sold Price	Sold Date	Sold Ratio	Original Ratio	Sold Terms
<a href="#">300 Wai Nani Way II/213</a>	\$391,000	01-23-2020	98%	98%	Cash

<a href="#">300 Wai Nani Way II/213</a> - MLS#: <a href="#">201932549</a> - Stunning turnkey condo in resort-like Waikiki condo is definitely priced to sell! Walking distance to the beach and convenience of all Waikiki attractions, Kapiolani parks, diamond head, & Ala Wai golfing. Liliuokalani Gardens has impeccable landscaping, soothing waterways filled pool, hot tub, recreational/reserved private party rooms, meeting space, tennis courts, picnic/bbq areas, 24-hrs security, secured entry, and lots and lots of covered guests parkings. Unit had been renovated with beautiful pergo flooring, central AC, granite kitchen counters, and stainless steel appliances. Treetop views to set your sight outside and catch a glimpse of the Ala Wai golf course greens and waterways as well. Newer building with water sprinklers. Don't miss seeing this! <b>Region:</b> Metro <b>Neighborhood:</b> Waikiki <b>Condition:</b> Excellent <b>Parking:</b> Covered - 1, Guest, Other <b>Total Parking:</b> 1 <b>View:</b> Garden, Golf Course, Mountain <b>Frontage:</b> Pool: <b>Zoning:</b> X2 - Apartment Precinct <b>Sale Conditions:</b> None <b>Schools:</b> <a href="#">Jefferson</a> , <a href="#">Washington</a> , <a href="#">Kaimuki</a> * <a href="#">Request Showing</a> , <a href="#">Photos</a> , <a href="#">History</a> , <a href="#">Maps</a> , <a href="#">Deed</a> , <a href="#">Watch List</a> , <a href="#">Tax Info</a>						
----------------------------------------------------------------------------------------------------------------------------------------------------------------------------------------------------------------------------------------------------------------------------------------------------------------------------------------------------------------------------------------------------------------------------------------------------------------------------------------------------------------------------------------------------------------------------------------------------------------------------------------------------------------------------------------------------------------------------------------------------------------------------------------------------------------------------------------------------------------------------------------------------------------------------------------------------------------------------------------------------------------------------------------------------------------------------------------------------------------------------------------------------------------------------------------------------------------------------------------------------------------------------------------------------------------------------------------------------------------------------------------------------------------------------------------------------------------	--	--	--	--	--	--

DOM = Days on Market, Occ. = Occupancy, FL = Floor Number