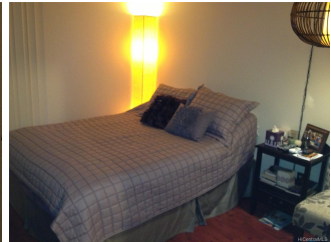
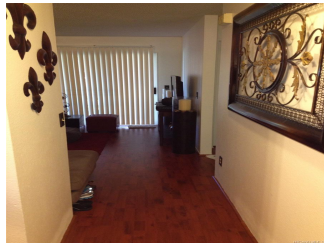


**[parkview at Waikele 94-207 Lumiaina Place Unit H202, Waipahu 96797](#) \* parkview at Waikele \* \$379,000 \* Originally \$390,000**

Sold Price: \$370,000	Sold Date: 04-07-2020	Sold Ratio: 98%
Beds: <b>2</b>	MLS#: <b><u><a href="#">201933433</a></u>, FS</b>	Year Built: <b>1992</b>
Bath: <b>1/0</b>	Status: <b>Sold</b>	Remodeled: <b>2018</b>
Living Sq. Ft.: <b>657</b>	List Date & DOM: <b>12-01-2019 &amp; 79</b>	Total Parking: <b>1</b>
Land Sq. Ft.: <b>190,488</b>	Condition: <b>Excellent</b>	<u><a href="#">Assessed Value</a></u>
Lanai Sq. Ft.: <b>86</b>	Frontage:	Building: <b>\$129,800</b>
Sq. Ft. Other: <b>0</b>	Tax/Year: <b>\$103/2018</b>	Land: <b>\$243,500</b>
Total Sq. Ft. <b>743</b>	Neighborhood: <b>Waikele</b>	Total: <b>\$373,300</b>
Maint./Assoc. <b>\$365 / \$0</b>	<u><a href="#">Flood Zone</a></u> : <b>Zone D - Tool</b>	Stories / CPR: <b>One / No</b>
Parking: <b>Assigned, Open - 1</b>	Frontage:	
<u><a href="#">Zoning</a></u> : <b>11 - A-1 Low Density Apartment</b>	View: <b>None</b>	

**Public Remarks:** For those who dream of modern, convenient living in one of Oahu's newer subdivisions, Parkview at Waikele is the place to be. Situated just 10 miles from Honolulu Airport, among the clean, tree-lined streets of beautiful Waikele, you'll find this renovated two-bedroom unit. This updated, pet-friendly, breezy second-story unit is nestled between an upscale outlet shopping center and a 13-acre park, which includes a 25-yard swimming pool, recreation center, fields and courts. Parkview at Waikele has low maintenance fees, guest parking and this unit comes with 1 parking space. The community is known for having one of the best public-school districts with Waikele Elementary School ranked better than 75.4% of elementary schools in Hawaii. **Sale Conditions:** None **Schools:** [Waikele](#), [Waipahu](#), [Waipahu](#) \* [Request Showing](#), [Photos](#), [History](#), [Maps](#), [Deed](#), [Watch List](#), [Tax Info](#)



Address	Price	Bd & Bth	Living / Avg.	Land   Avg.	Lanai	Occ.	FL	DOM
<a href="#">94-207 Lumiaina Place H202</a>	<b>\$379,000</b>	2 & 1/0	657   \$577	190,488   \$2	86	55%	2	79

Address	Tax   Maint.   Ass.	Assessed Land	Assessed Building	Assessed Total	Ratio	Year & Remodeled
<a href="#">94-207 Lumiaina Place H202</a>	\$103   \$365   \$0	\$243,500	\$129,800	\$373,300	102%	1992 & 2018

Address	Sold Price	Sold Date	Sold Ratio	Original Ratio	Sold Terms
<a href="#">94-207 Lumiaina Place H202</a>	\$370,000	04-07-2020	98%	95%	Conventional 0

[94-207 Lumiaina Place H202](#) - MLS#: [201933433](#) - Original price was \$390,000 - For those who dream of modern, convenient living in one of Oahu's newer subdivisions, Parkview at Waikele is the place to be. Situated just 10 miles from Honolulu Airport, among the clean, tree-lined streets of beautiful Waikele, you'll find this renovated two-bedroom unit. This updated, pet-friendly, breezy second-story unit is nestled between an upscale outlet shopping center and a 13-acre park, which includes a 25-yard swimming pool, recreation center, fields and courts. Parkview at Waikele has low maintenance fees, guest parking and this unit comes with 1 parking space. The community is known for having one of the best public-school districts with Waikele Elementary School ranked better than 75.4% of elementary schools in Hawaii. **Region:** Waipahu  
**Neighborhood:** Waikele **Condition:** Excellent **Parking:** Assigned, Open - 1 **Total Parking:** 1 **View:** None **Frontage:** **Pool:**  
**Zoning:** 11 - A-1 Low Density Apartment **Sale Conditions:** None **Schools:** [Waikele](#), [Waipahu](#), [Waipahu](#) \* [Request Showing](#), [Photos](#), [History](#), [Maps](#), [Deed](#), [Watch List](#), [Tax Info](#)

DOM = Days on Market, Occ. = Occupancy, FL = Floor Number