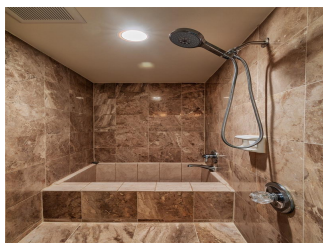
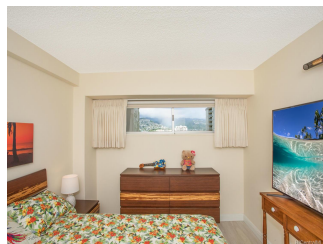
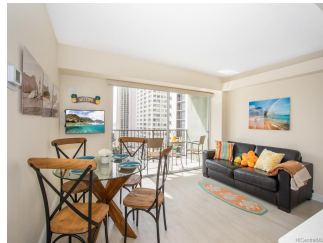


Waikiki Park Hgts 2440 Kuhio Avenue Unit 1505, Honolulu 96815 * Waikiki Park Hgts *

\$410,000 * Originally \$428,000

Sold Price: \$405,000	Sold Date: 02-05-2020	Sold Ratio: 99%
Beds: 1	MLS#: <u>201933736</u> , FS	Year Built: 1974
Bath: 1/0	Status: Sold	Remodeled:
Living Sq. Ft.: 488	List Date & DOM: 12-06-2019 & 42	Total Parking: 0
Land Sq. Ft.: 33,803	Condition: Excellent	Assessed Value
Lanai Sq. Ft.: 60	Frontage:	Building: \$313,300
Sq. Ft. Other: 0	Tax/Year: \$111/2019	Land: \$67,000
Total Sq. Ft. 548	Neighborhood: Waikiki	Total: \$380,300
Maint./Assoc. \$652 / \$0	Flood Zone : Zone AE - Tool	Stories / CPR: 21+ / No
Parking: None, Garage	Frontage:	
Zoning : X2 - Apartment Precinct	View: Golf Course, Mountain, Ocean	

Public Remarks: Rarely available high-level floor with expansive ocean views 2 blocks from the heart of Waikiki Beach. Brand new renovation includes Italian ceramic flooring throughout condo and lanai, new kitchen with shaker cabinets, quartz counter tops, back splash tiles from Portugal, appliances incl. dish washer, shower and bath dressed in marble, stone top vanity, etc. Ready to move in with new high-end furniture from Inspiration Interiors and fully stocked kitchen. No expense spared with Restoration Hardware faucet and lights, remote controlled automatic blackout roller shades, mother or pearl bathroom mirror, etc. Watch the surfers, boats, and even whales in season from the living area or lanai, and enjoy incredible views to the mountains over the Alawai canal and Golf course from the bedroom. **Sale Conditions:** None **Schools:** [Jefferson](#), [Washington](#), [Kaimuki](#) * [Request Showing](#), [Photos](#), [History](#), [Maps](#), [Deed](#), [Watch List](#), [Tax Info](#)



Address	Price	Bd & Bth	Living / Avg.	Land Avg.	Lanai	Occ.	FL	DOM
2440 Kuhio Avenue 1505	\$410,000	1 & 1/0	488 \$840	33,803 \$12	60	20%	15	42

Address	Tax Maint. Ass.	Assessed Land	Assessed Building	Assessed Total	Ratio	Year & Remodeled
2440 Kuhio Avenue 1505	\$111 \$652 \$0	\$67,000	\$313,300	\$380,300	108%	1974 & NA

Address	Sold Price	Sold Date	Sold Ratio	Original Ratio	Sold Terms
2440 Kuhio Avenue 1505	\$405,000	02-05-2020	99%	95%	Cash

[2440 Kuhio Avenue 1505](#) - MLS#: [201933736](#) - Original price was \$428,000 - Rarely available high-level floor with expansive ocean views 2 blocks from the heart of Waikiki Beach. Brand new renovation includes Italian ceramic flooring throughout condo and lanai, new kitchen with shaker cabinets, quartz counter tops, back splash tiles from Portugal, appliances incl. dish washer, shower and bath dressed in marble, stone top vanity, etc. Ready to move in with new high-end furniture from Inspiration Interiors and fully stocked kitchen. No expense spared with Restoration Hardware faucet and lights, remote controlled automatic blackout roller shades, mother of pearl bathroom mirror, etc. Watch the surfers, boats, and even whales in season from the living area or lanai, and enjoy incredible views to the mountains over the Alawai canal and Golf course from the bedroom. **Region:** Metro **Neighborhood:** Waikiki **Condition:** Excellent **Parking:** None, Garage **Total Parking:** 0 **View:** Golf Course, Mountain, Ocean **Frontage:** **Pool:** **Zoning:** X2 - Apartment Precinct **Sale Conditions:** None **Schools:** [Jefferson](#), [Washington](#), [Kaimuki](#) * [Request Showing](#), [Photos](#), [History](#), [Maps](#), [Deed](#), [Watch List](#), [Tax Info](#)

DOM = Days on Market, Occ. = Occupancy, FL = Floor Number