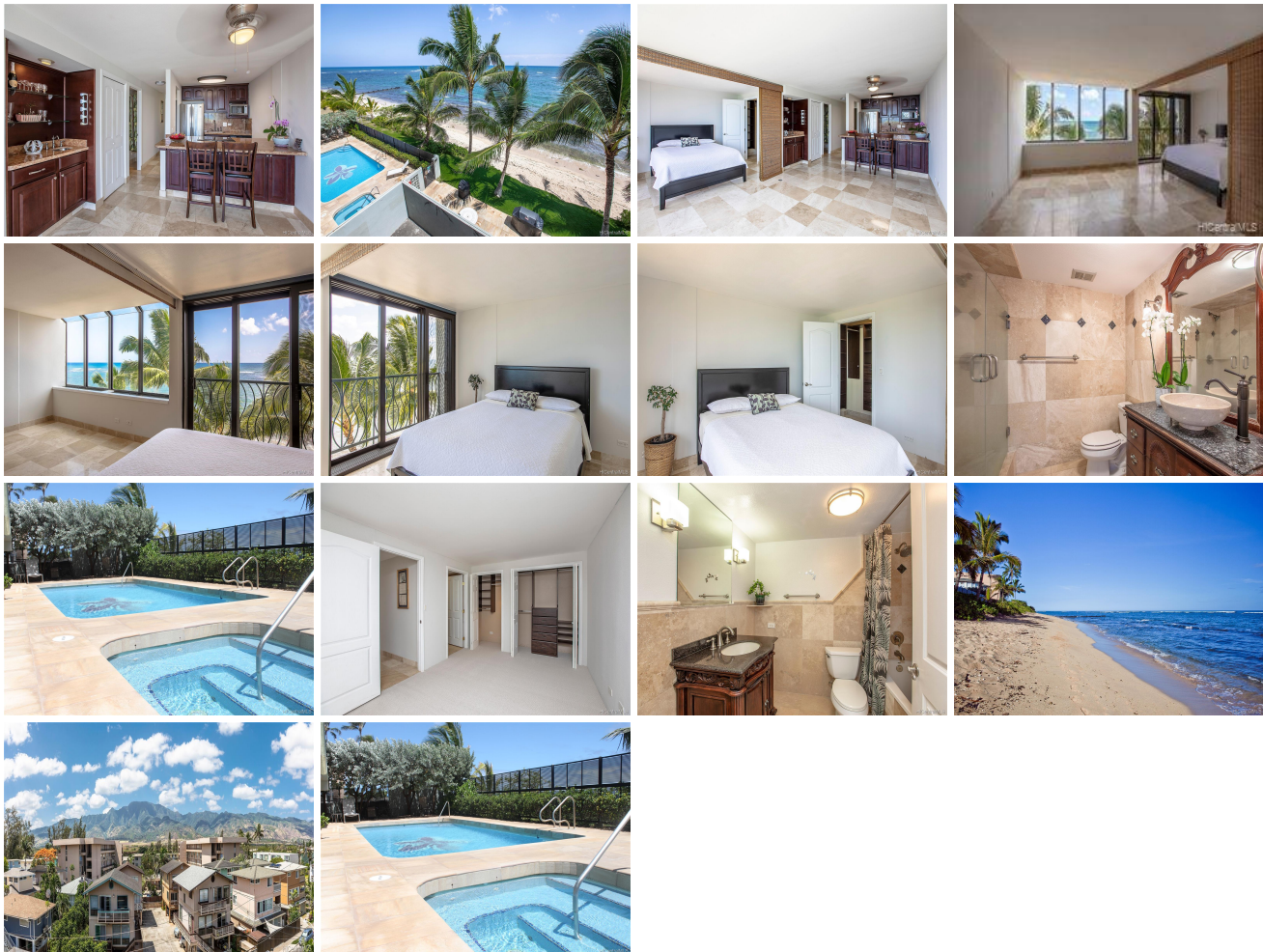


## Sunset Shores 68-121 Au Street Unit 404, Waialua 96791 \* Sunset Shores \* \$690,000

Sold Price: \$684,000	Sold Date: 08-24-2020	Sold Ratio: 99%
Beds: <b>2</b>	MLS#: <b>201935252, FS</b>	Year Built: <b>1982</b>
Bath: <b>2/0</b>	Status: <b>Sold</b>	Remodeled: <b>2007</b>
Living Sq. Ft.: <b>860</b>	List Date & DOM: <b>12-18-2019 &amp; 203</b>	Total Parking: <b>1</b>
Land Sq. Ft.: <b>22,346</b>	Condition: <b>Above Average</b>	<a href="#">Assessed Value</a>
Lanai Sq. Ft.: <b>0</b>	Frontage: <b>Ocean, Sandy Beach</b>	Building: <b>\$622,000</b>
Sq. Ft. Other: <b>0</b>	Tax/Year: <b>\$199/2019</b>	Land: <b>\$59,300</b>
Total Sq. Ft. <b>860</b>	Neighborhood: <b>Waialua</b>	Total: <b>\$681,300</b>
Maint./Assoc. <b>\$818 / \$0</b>	<a href="#">Flood Zone</a> : <b>Zone VE - Tool</b>	Stories / CPR: <b>4-7 / No</b>
Parking: <b>Assigned, Guest, Open - 1, Street</b>	Frontage: <b>Ocean, Sandy Beach</b>	
<a href="#">Zoning</a> : <b>12 - A-2 Medium Density Apartme</b>	View: <b>Coastline, Mountain, Ocean, Sunrise, Sunset</b>	

**Public Remarks:** "Life-Enhancing," spectacular lifestyle on this pet-friendly beachfront property! This timeless 2/2 condo was completely remodeled with 18x18 travertine marble throughout the flooring, and both bathrooms, solid cabinets, granite countertops, and closet system. Amenities include a natural salt pool, spa, BBQ on 16X24" Brazilian quartzite fronting lovely green lawn, and private beach access. Near Aweoweo beach park with basketball court, jungle gym & swings, near bus, jogging & walking path & 5 mins to The Waialua Shopping Center, Historic Haleiwa town, 15 minutes to Schofield Barracks & Wheeler Air Force Base, and 40 mins to HNL ITN'L Airport. **Sale Conditions:** None **Schools:** [Waialua](#), [Waialua](#), [Waialua](#) \* [Request Showing](#), [Photos](#), [History](#), [Maps](#), [Deed](#), [Watch List](#), [Tax Info](#)



Address	Price	Bd & Bth	Living / Avg.	Land   Avg.	Lanai	Occ.	FL	DOM
<a href="#">68-121 Au Street 404</a>	<a href="#">\$690,000</a>	2 & 2/0	860   \$802	22,346   \$31	0	53%	4	203

Address	Tax   Maint.   Ass.	Assessed Land	Assessed Building	Assessed Total	Ratio	Year & Remodeled
<a href="#">68-121 Au Street 404</a>	\$199   \$818   \$0	\$59,300	\$622,000	\$681,300	101%	1982 & 2007

Address	Sold Price	Sold Date	Sold Ratio	Original Ratio	Sold Terms
<a href="#">68-121 Au Street 404</a>	\$684,000	08-24-2020	99%	99%	Conventional 13680

[68-121 Au Street 404](#) - MLS#: [201935252](#) - "Life-Enhancing," spectacular lifestyle on this pet-friendly beachfront property! This timeless 2/2 condo was completely remodeled with 18x18 travertine marble throughout the flooring, and both bathrooms, solid cabinets, granite countertops, and closet system. Amenities include a natural salt pool, spa, BBQ on 16X24" Brazilian quartzite fronting lovely green lawn, and private beach access. Near Aweoweo beach park with basketball court, jungle gym & swings, near bus, jogging & walking path & 5 mins to The Waialua Shopping Center, Historic Haleiwa town, 15 minutes to Schofield Barracks & Wheeler Air Force Base, and 40 mins to HNL ITN'L Airport. **Region:** North Shore  
**Neighborhood:** Waialua **Condition:** Above Average **Parking:** Assigned, Guest, Open - 1, Street **Total Parking:** 1 **View:** Coastline, Mountain, Ocean, Sunrise, Sunset **Frontage:** Ocean, Sandy Beach **Pool:** **Zoning:** 12 - A-2 Medium Density Apartme **Sale Conditions:** None **Schools:** [Waialua](#), [Waialua](#), [Waialua](#) \* [Request Showing](#), [Photos](#), [History](#), [Maps](#), [Deed](#), [Watch List](#), [Tax Info](#)

DOM = Days on Market, Occ. = Occupancy, FL = Floor Number