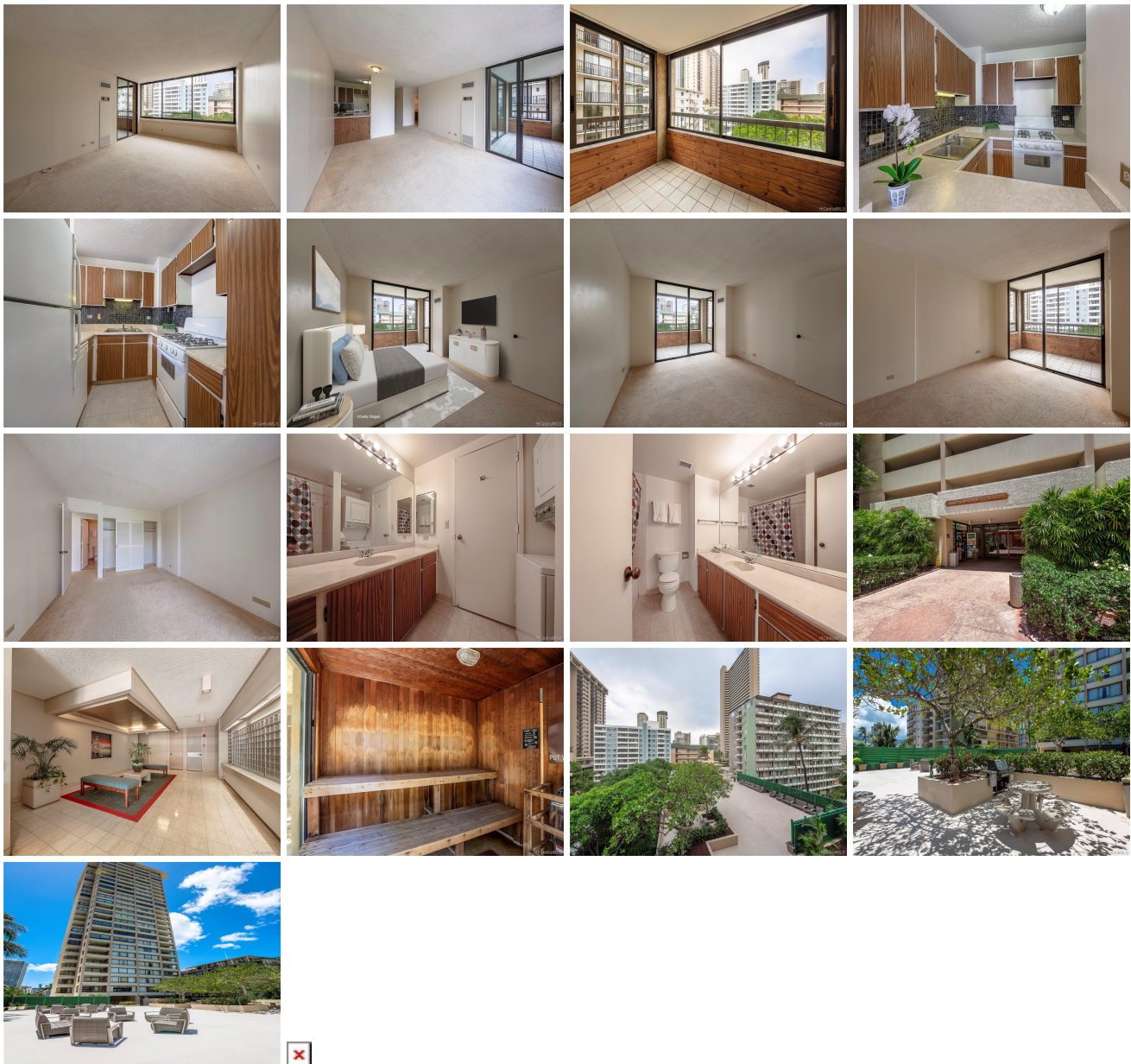


## **Aloha Towers 430 Lewers Street Unit 705, Honolulu 96815 \* Aloha Towers \* \$415,000**

Sold Price: \$415,000	Sold Date: 02-20-2020	Sold Ratio: 100%
Beds: <b>1</b>	MLS#: <b>201935440, FS</b>	Year Built: <b>1976</b>
Bath: <b>1/0</b>	Status: <b>Sold</b>	Remodeled:
Living Sq. Ft.: <b>673</b>	List Date & DOM: <b>12-19-2019 &amp; 15</b>	Total Parking: <b>1</b>
Land Sq. Ft.: <b>45,259</b>	Condition: <b>Average, Fair</b>	<a href="#">Assessed Value</a>
Lanai Sq. Ft.: <b>89</b>	Frontage: <b>Other</b>	Building: <b>\$392,800</b>
Sq. Ft. Other: <b>0</b>	Tax/Year: <b>\$131/2019</b>	Land: <b>\$54,500</b>
Total Sq. Ft. <b>762</b>	Neighborhood: <b>Waikiki</b>	Total: <b>\$447,300</b>
Maint./Assoc. <b>\$715 / \$0</b>	<a href="#">Flood Zone</a> : <b>Zone AO - Tool</b>	Stories / CPR: <b>21+ / No</b>
Parking: <b>Assigned, Covered - 1, Guest</b>	Frontage: <b>Other</b>	
<a href="#">Zoning</a> : <b>X2 - Apartment Precinct</b>	View: <b>City, Garden, Mountain</b>	

**Public Remarks:** Incredible opportunity to own your Hawaiian home with this affordable price in the popular Aloha Towers! Located in the heart of Waikiki, this well-managed, secured building is on the quiet side of Waikiki. Amenities include pool, hot tub, sauna, barbecue, recreational area, guest parking, and there is a convenience store at the ground level. This corner, one-bedroom unit features a spacious floor plan with enclosed lanai, central A/C, and one covered parking. The maintenance fee includes all the utilities. Short distance to International Market Place, Waikiki Beach, bus lines, shops, and restaurants. Convenient and ideal location to live or as an investment. The unit is in original condition and sold as-is. Pictures with furniture are virtually staged. **Sale Conditions:** None **Schools:** [Jefferson](#), [Washington](#), [Kaimuki](#) \* [Request Showing](#), [Photos](#), [History](#), [Maps](#), [Deed](#), [Watch List](#), [Tax Info](#)



Address	Price	Bd & Bth	Living / Avg.	Land   Avg.	Lanai	Occ.	FL	DOM
<a href="#">430 Lewers Street 705</a>	<a href="#">\$415,000</a>	1 & 1/0	673   \$617	45,259   \$9	89	60%	7	15

Address	Tax   Maint.   Ass.	Assessed Land	Assessed Building	Assessed Total	Ratio	Year & Remodeled
<a href="#">430 Lewers Street 705</a>	\$131   \$715   \$0	\$54,500	\$392,800	\$447,300	93%	1976 & NA

Address	Sold Price	Sold Date	Sold Ratio	Original Ratio	Sold Terms
<a href="#">430 Lewers Street 705</a>	\$415,000	02-20-2020	100%	100%	Conventional

[430 Lewers Street 705](#) - MLS#: [201935440](#) - Incredible opportunity to own your Hawaiian home with this affordable price in the popular Aloha Towers! Located in the heart of Waikiki, this well-managed, secured building is on the quiet side of Waikiki. Amenities include pool, hot tub, sauna, barbecue, recreational area, guest parking, and there is a convenience store at the ground level. This corner, one-bedroom unit features a spacious floor plan with enclosed lanai, central A/C, and one covered parking. The maintenance fee includes all the utilities. Short distance to International Market Place, Waikiki Beach, bus lines, shops, and restaurants. Convenient and ideal location to live or as an investment. The unit is in original condition and sold as-is. Pictures with furniture are virtually staged. **Region:** Metro **Neighborhood:** Waikiki **Condition:** Average, Fair **Parking:** Assigned, Covered - 1, Guest **Total Parking:** 1 **View:** City, Garden, Mountain **Frontage:** Other **Pool:** **Zoning:** X2 - Apartment Precinct **Sale Conditions:** None **Schools:** [Jefferson](#), [Washington](#), [Kaimuki](#) \* [Request Showing](#), [Photos](#), [History](#), [Maps](#), [Deed](#), [Watch List](#), [Tax Info](#)

DOM = Days on Market, Occ. = Occupancy, FL = Floor Number