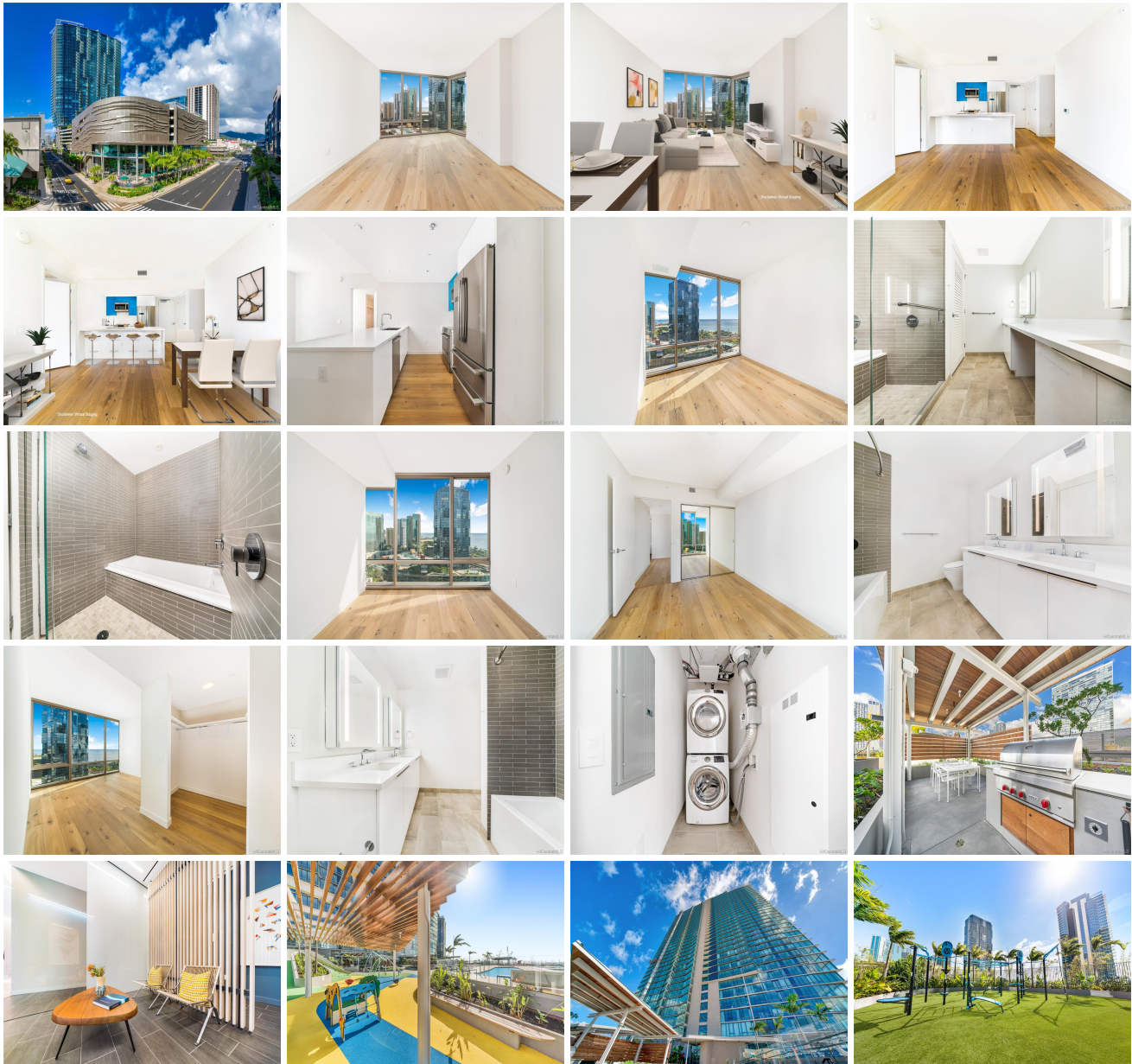


Ae'o 1001 Queen Street Unit 2202, Honolulu 96814 * Ae'o * \$1,398,000 * Originally \$1,460,000

Beds: 2	MLS#: <u>202000211</u>, FS	Year Built: 2018
Bath: 2/0	Status: Expired	Remodeled:
Living Sq. Ft.: 983	List Date & DOM: 01-03-2020 & 362	Total Parking: 2
Land Sq. Ft.: 0	Condition: Excellent	Assessed Value
Lanai Sq. Ft.: 0	Frontage:	Building: \$88,700
Sq. Ft. Other: 0	Tax/Year: \$114/2018	Land: \$64,000
Total Sq. Ft. 983	Neighborhood: Kakaako	Total: \$152,700
Maint./Assoc. \$889 / \$26	Flood Zone : Zone AE - Tool	Stories / CPR: 21+ / No
Parking: Assigned, Covered - 2, Tandem	Frontage:	
Zoning : Kak - Kakaako Community Development Project	View: City, Coastline, Ocean	

Public Remarks: Preferred 02 stack with upgraded wood flooring, south east facing 2 bedroom and 2 baths unit with ocean/park/harbor view, thoughtfully designed with meticulous attention to detail. Floor-to-ceiling windows provide ample light and create a feeling of openness. Top quality European fixtures and fittings provide a stunning aesthetic statement, but are also designed for convenience and ease of use. Ae'o offers exceptional amenities for those who want to live the ultimate modern Hawaiian lifestyle with an unprecedented level of amenities and is conveniently connected to Hawaii's flagship Whole Foods Market. Residents experience the best of urban living in the heart of Ward Village in the most sought-after Kakaako neighborhood. **Sale Conditions:** None **Schools:** , , * [Request Showing](#), [Photos](#), [History](#), [Maps](#), [Deed](#), [Watch List](#), [Tax Info](#)





Address	Price	Bd & Bth	Living / Avg.	Land Avg.	Lanai	Occ.	FL	DOM
1001 Queen Street 2202	\$1,398,000	2 & 2/0	983 \$1,422	0 \$inf	0	0%	22	362

Address	Tax Maint. Ass.	Assessed Land	Assessed Building	Assessed Total	Ratio	Year & Remodeled
1001 Queen Street 2202	\$114 \$889 \$26	\$64,000	\$88,700	\$152,700	916%	2018 & NA

[1001 Queen Street 2202](#) - MLS#: [202000211](#) - Original price was \$1,460,000 - Preferred 02 stack with upgraded wood flooring, south east facing 2 bedroom and 2 baths unit with ocean/park/harbor view, thoughtfully designed with meticulous attention to detail. Floor-to-ceiling windows provide ample light and create a feeling of openness. Top quality European fixtures and fittings provide a stunning aesthetic statement, but are also designed for convenience and ease of use. Ae'o offers exceptional amenities for those who want to live the ultimate modern Hawaiian lifestyle with an unprecedented level of amenities and is conveniently connected to Hawaii's flagship Whole Foods Market. Residents experience the best of urban living in the heart of Ward Village in the most sought-after Kakaako neighborhood. **Region:** Metro **Neighborhood:** Kakaako **Condition:** Excellent **Parking:** Assigned, Covered - 2, Tandem **Total Parking:** 2 **View:** City, Coastline, Ocean **Frontage:** **Pool:** **Zoning:** Kak - Kakaako Community Development Project **Sale Conditions:** None **Schools:** , , * [Request Showing](#), [Photos](#), [History](#), [Maps](#), [Deed](#), [Watch List](#), [Tax Info](#)

DOM = Days on Market, Occ. = Occupancy, FL = Floor Number