

Windward Passage 322 Aoloa Street Unit PH-4, Kailua 96734 * Windward Passage *

\$548,000

Sold Price: \$548,000
Beds: **1**
Bath: **1/0**
Living Sq. Ft.: **713**
Land Sq. Ft.: **134,600**
Lanai Sq. Ft.: **0**
Sq. Ft. Other: **0**
Total Sq. Ft. **713**
Maint./Assoc. **\$619 / \$0**

Sold Date: 03-27-2020
MLS#: **202001062, FS**
Status: **Sold**
List Date & DOM: **01-24-2020 & 38**
Condition: **Above Average**
Frontage:
Tax/Yr: **\$156/2019**
Neighborhood: **Kailua Town**
Flood Zone: **Zone X - Tool**

Sold Ratio: 100%
Year Built: **1979**
Remodeled:
Total Parking: **1**
Assessed Value
Building: **\$443,000**
Land: **\$90,100**
Total: **\$533,100**
Stories / CPR: / **No**

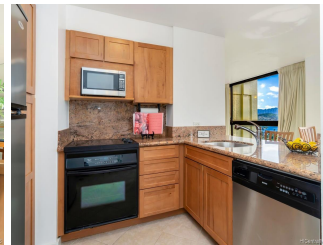
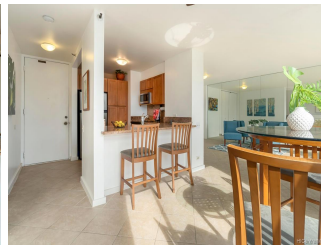
Parking: **Covered - 1**

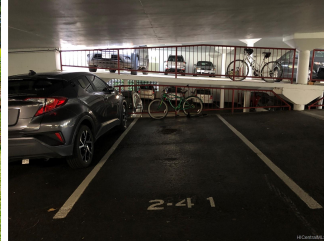
Zoning: **12 - A-2 Medium Density Apartme**

Frontage:

View: **City, Mountain**

Public Remarks: Savor the majestic panoramic Ko'olau Mountain views from this Windward Passage penthouse. Features include beautifully updated kitchen and bathrooms, ceramic tile flooring, and floor to ceiling windows. Enjoy living at Windward Passage conveniently located in the heart of Kailua! Amenities include heated swimming pool, sauna, BBQs, dog park, racquetball courts, recreation deck with kitchen, kayak/surfboard/bike racks, tennis courts and an exercise room. Very close to restaurants, schools, public library, parks and the beautiful white sandy beaches of Kailua! Don't miss this great opportunity to own a Penthouse unit in Kailua with gorgeous Ko'olau mountain and Enchanted Lake views. **Sale Conditions:** None **Schools:** [Kailua](#), [Kailua](#), [Kalaheo](#) * [Request Showing](#), [Photos](#), [History](#), [Maps](#), [Deed](#), [Watch List](#), [Tax Info](#)





Address	Price	Bd & Bth	Living / Avg.	Land Avg.	Lanai	Occ.	FL	DOM
322 Aoloa Street PH-4	\$548,000	1 & 1/0	713 \$769	134,600 \$4	0	53%	17	38

Address	Tax Maint. Ass.	Assessed Land	Assessed Building	Assessed Total	Ratio	Year & Remodeled
322 Aoloa Street PH-4	\$156 \$619 \$0	\$90,100	\$443,000	\$533,100	103%	1979 & NA

Address	Sold Price	Sold Date	Sold Ratio	Original Ratio	Sold Terms
322 Aoloa Street PH-4	\$548,000	03-27-2020	100%	100%	VA 500

[322 Aoloa Street PH-4](#) - MLS#: [202001062](#) - Savor the majestic panoramic Ko'olau Mountain views from this Windward Passage penthouse. Features include beautifully updated kitchen and bathrooms, ceramic tile flooring, and floor to ceiling windows. Enjoy living at Windward Passage conveniently located in the heart of Kailua! Amenities include heated swimming pool, sauna, BBQs, dog park, racquetball courts, recreation deck with kitchen, kayak/surfboard/bike racks, tennis courts and a exercise room. Very close to restaurants, schools, public library, parks and the beautiful white sandy beaches of Kailua! Don't miss this great opportunity to own a Penthouse unit in Kailua with gorgeous Ko'olau mountain and Enchanted Lake views. **Region:** Kailua **Neighborhood:** Kailua Town **Condition:** Above Average **Parking:** Covered - 1 **Total Parking:** 1 **View:** City, Mountain **Frontage:** Pool: **Zoning:** 12 - A-2 Medium Density Apartme **Sale Conditions:** None **Schools:** [Kailua](#), [Kailua](#), [Kalaheo](#) * [Request Showing](#), [Photos](#), [History](#), [Maps](#), [Deed](#), [Watch List](#), [Tax Info](#)

DOM = Days on Market, Occ. = Occupancy, FL = Floor Number