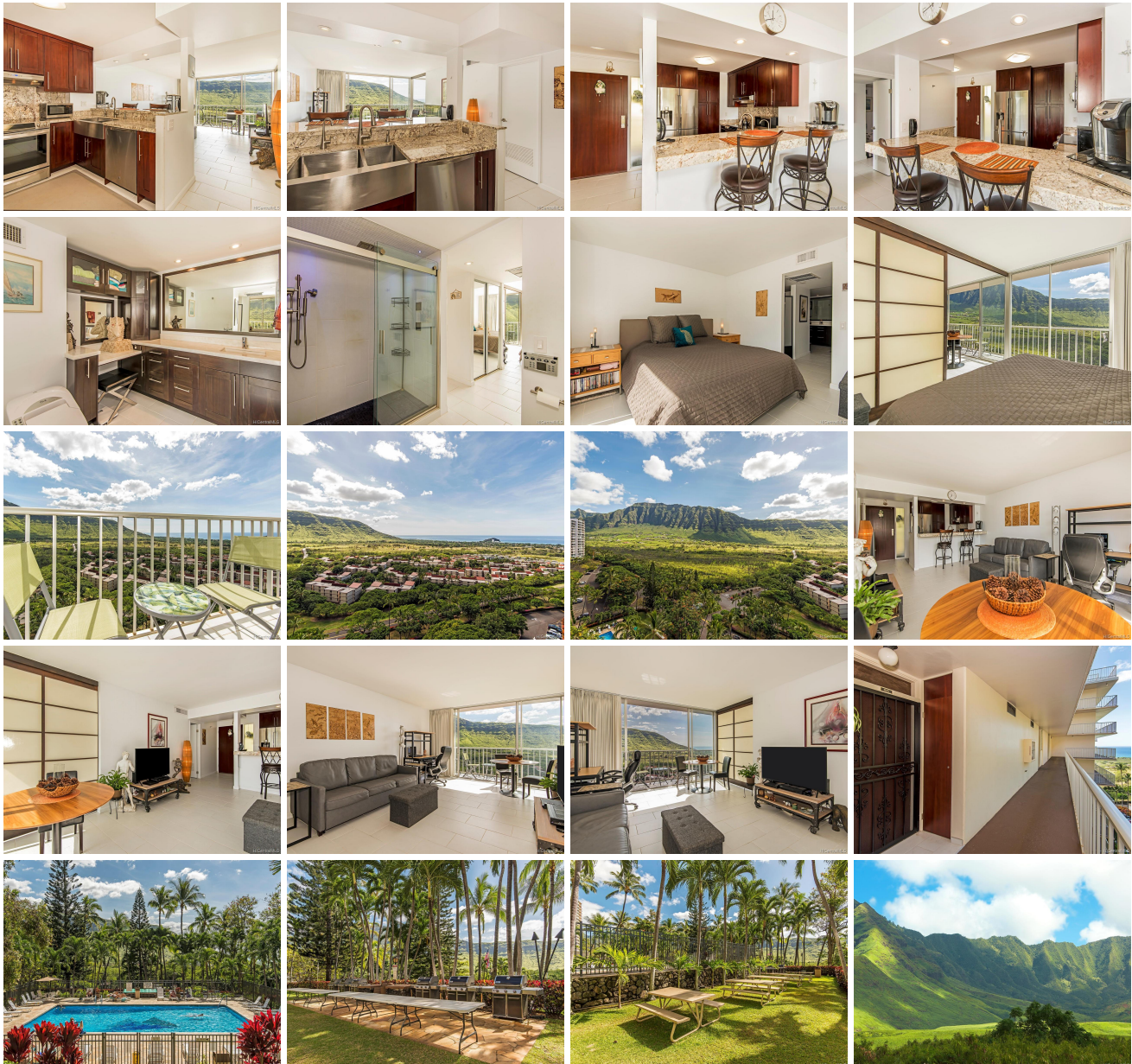


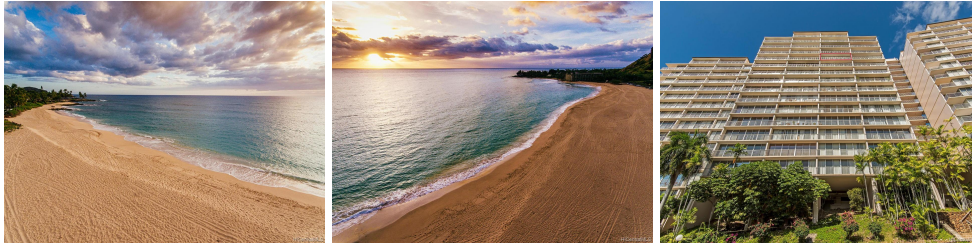
Makaha Valley Towers 84-710 Kili Drive Unit 1615, Waianae 96792 * Makaha Valley Towers

*** \$230,000**

| | | |
|---|--|--------------------------------|
| Sold Price: \$225,000 | Sold Date: 06-15-2020 | Sold Ratio: 98% |
| Beds: 1 | MLS#: <u>202002378</u>, FS | Year Built: 1970 |
| Bath: 1/0 | Status: Sold | Remodeled: 2014 |
| Living Sq. Ft.: 680 | List Date & DOM: 02-04-2020 & 94 | Total Parking: 1 |
| Land Sq. Ft.: 612,759 | Condition: Excellent | Assessed Value |
| Lanai Sq. Ft.: 60 | Frontage: Other | Building: \$176,300 |
| Sq. Ft. Other: 0 | Tax/Year: \$56/2020 | Land: \$34,900 |
| Total Sq. Ft. 740 | Neighborhood: Makaha | Total: \$211,200 |
| Maint./Assoc. \$821 / \$0 | Flood Zone : Zone D - Tool | Stories / CPR: One / No |
| Parking: Guest, Open - 1, Unassigned | Frontage: Other | |
| Zoning : 12 - A-2 Medium Density Apartme | View: Coastline, Garden, Golf Course, Mountain, Ocean, Sunset | |

Public Remarks: Must see quick before it's gone! The fully upgraded "turn key" condition units do not come up very often and it will not last long. It's a 1 bed, 1 bath, 680 sf unit, with central A/C that comes fully furnished. Enjoy the peaceful surroundings in Makaha and the awesome ocean and mountain views from your high floor unit lanai. Upgrades include custom cabinet's in the kitchen and bathroom, granite counter tops, SS appliances, all ceramic tile floors, auto sensor faucets, dimming lights, bidet, no-popcorn ceiling, and a 9 headed shower that you will not want to leave. The complex is very secure with 24-hr security and the grounds are beautiful. You will love living in the Makaha Valley Towers. See our online tour and make your appointment today. **Sale Conditions:** None **Schools:** [Makaha](#), [Waianae](#), [Waianae](#) * [Request Showing](#), [Photos](#), [History](#), [Maps](#), [Deed](#), [Watch List](#), [Tax Info](#)





| Address | Price | Bd & Bth | Living / Avg. | Land Avg. | Lanai | Occ. | FL | DOM |
|--|---------------------------|----------|---------------|---------------|-------|------|----|-----|
| 84-710 Kili Drive 1615 | \$230,000 | 1 & 1/0 | 680 \$338 | 612,759 \$0 | 60 | 27% | 16 | 94 |

| Address | Tax Maint. Ass. | Assessed Land | Assessed Building | Assessed Total | Ratio | Year & Remodeled |
|--|---------------------|---------------|-------------------|----------------|-------|------------------|
| 84-710 Kili Drive 1615 | \$56 \$821 \$0 | \$34,900 | \$176,300 | \$211,200 | 109% | 1970 & 2014 |

| Address | Sold Price | Sold Date | Sold Ratio | Original Ratio | Sold Terms |
|--|------------|------------|------------|----------------|------------|
| 84-710 Kili Drive 1615 | \$225,000 | 06-15-2020 | 98% | 98% | Cash |

[84-710 Kili Drive 1615](#) - MLS#: [202002378](#) - Must see quick before it's gone! The fully upgraded "turn key" condition units do not come up very often and it will not last long. It's a 1 bed, 1 bath, 680 sf unit, with central A/C that comes fully furnished. Enjoy the peaceful surroundings in Makaha and the awesome ocean and mountain views from your high floor unit lanai. Upgrades include custom cabinet's in the kitchen and bathroom, granite counter tops, SS appliances, all ceramic tile floors, auto sensor faucets, dimming lights, bidet, no-popcorn ceiling, and a 9 headed shower that you will not want to leave. The complex is very secure with 24-hr security and the grounds are beautiful. You will love living in the Makaha Valley Towers. See our online tour and make your appointment today. **Region:** Leeward **Neighborhood:** Makaha **Condition:** Excellent **Parking:** Guest, Open - 1, Unassigned **Total Parking:** 1 **View:** Coastline, Garden, Golf Course, Mountain, Ocean, Sunset **Frontage:** Other **Pool:** **Zoning:** 12 - A-2 Medium Density Apartme **Sale Conditions:** None **Schools:** [Makaha](#), [Waianae](#), [Waianae](#) * [Request Showing](#), [Photos](#), [History](#), [Maps](#), [Deed](#), [Watch List](#), [Tax Info](#)

DOM = Days on Market, Occ. = Occupancy, FL = Floor Number