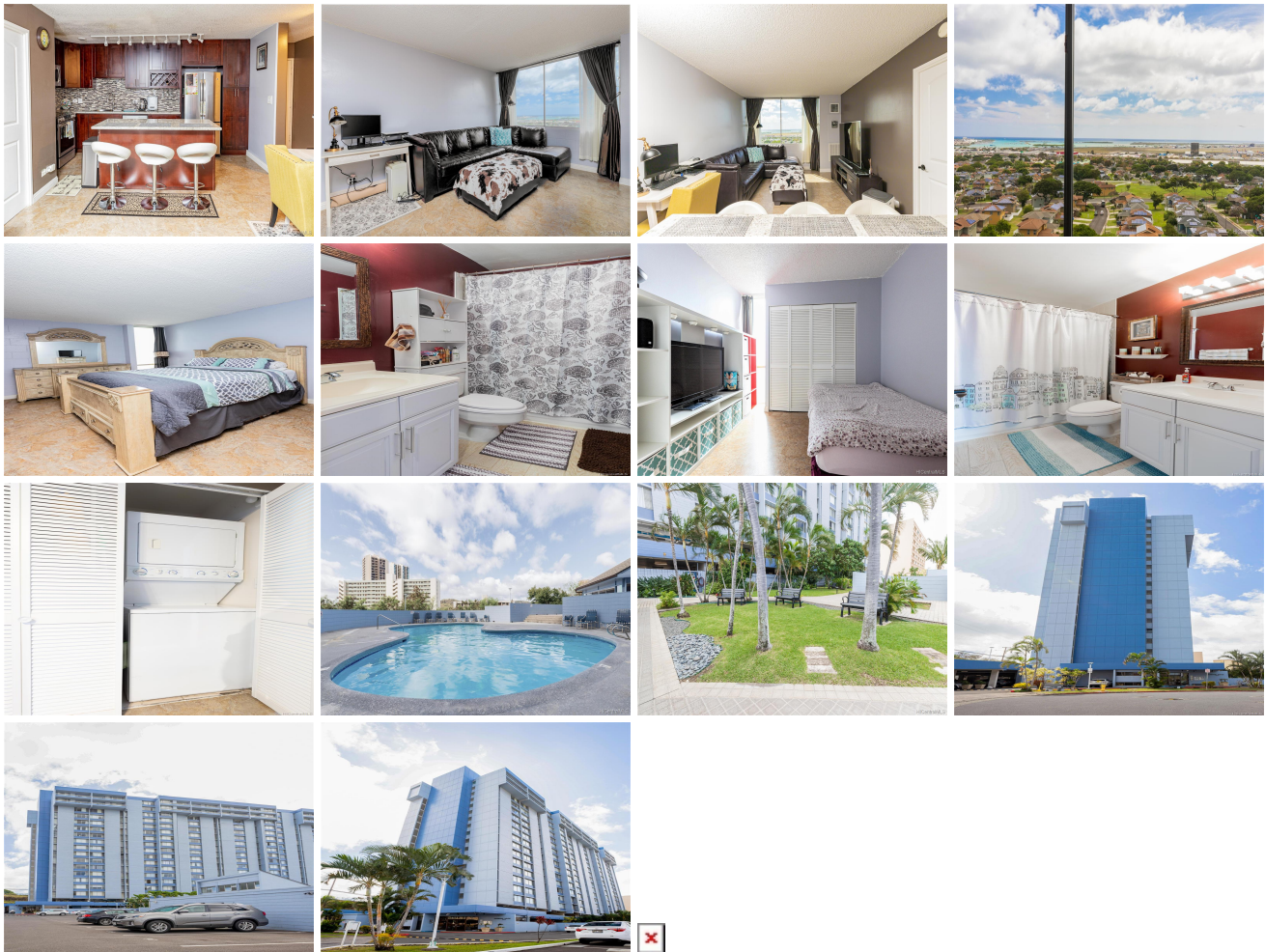


Harbour Ridge 3045 Ala Napuaa Place Unit 1510, Honolulu 96818 * Harbour Ridge *

\$410,000

Sold Price: \$395,000	Sold Date: 07-24-2020	Sold Ratio: 96%
Beds: 2	MLS#: 202003777, FS	Year Built: 1974
Bath: 2/0	Status: Sold	Remodeled:
Living Sq. Ft.: 850	List Date & DOM: 02-21-2020 & 115	Total Parking: 1
Land Sq. Ft.: 140,307	Condition: Above Average	Assessed Value
Lanai Sq. Ft.: 0	Frontage: Other	Building: \$323,900
Sq. Ft. Other: 0	Tax/Year: \$88/2019	Land: \$56,300
Total Sq. Ft. 850	Neighborhood: Salt Lake	Total: \$380,200
Maint./Assoc. \$967 / \$0	Flood Zone : Zone X - Tool	Stories / CPR: 15-20 / No
Parking: Assigned, Guest, Open - 1	Frontage: Other	
Zoning : 12 - A-2 Medium Density Apartme	View: City, Coastline, Ocean, Sunrise	

Public Remarks: Enjoy the breathtaking views of Diamond Head, the coastline and the city from your living room! Recently remodeled kitchen with a beautiful large island! Dark floor to ceiling cabinets with granite countertops, glass tile backsplash, stainless steel appliances, and track lighting! This 2 bedroom, 2 bath, 1 parking unit is move-in ready! Relax at the pool on the weekends or after a long day at work. Secure building with camera's on each floor, and onsite security. Tucked away at the end of a cul-de-sac with lots of guests parking and amenities. Easy access to freeway, military bases, airport, shopping centers, hospitals, and schools. **Sale Conditions:** None **Schools:** , , * [Request Showing](#), [Photos](#), [History](#), [Maps](#), [Deed](#), [Watch List](#), [Tax Info](#)



Address	Price	Bd & Bth	Living / Avg.	Land Avg.	Lanai	Occ.	FL	DOM
3045 Ala Napuaa Place 1510	\$410,000	2 & 2/0	850 \$482	140,307 \$3	0	44%	15	115

Address	Tax Maint. Ass.	Assessed Land	Assessed Building	Assessed Total	Ratio	Year & Remodeled
3045 Ala Napuaa Place 1510	\$88 \$967 \$0	\$56,300	\$323,900	\$380,200	108%	1974 & NA

Address	Sold Price	Sold Date	Sold Ratio	Original Ratio	Sold Terms
3045 Ala Napuaa Place 1510	\$395,000	07-24-2020	96%	96%	VA

[3045 Ala Napuaa Place 1510](#) - MLS#: [202003777](#) - Enjoy the breathtaking views of Diamond Head, the coastline and the city from your living room! Recently remodeled kitchen with a beautiful large island! Dark floor to ceiling cabinets with granite countertops, glass tile backsplash, stainless steel appliances, and track lighting! This 2 bedroom, 2 bath, 1 parking unit is move-in ready! Relax at the pool on the weekends or after a long day at work. Secure building with camera's on each floor, and onsite security. Tucked away at the end of a cul-de-sac with lots of guests parking and amenities. Easy access to freeway, military bases, airport, shopping centers, hospitals, and schools. **Region:** Metro **Neighborhood:** Salt Lake **Condition:** Above Average **Parking:** Assigned, Guest, Open - 1 **Total Parking:** 1 **View:** City, Coastline, Ocean, Sunrise **Frontage:** Other **Pool:** **Zoning:** 12 - A-2 Medium Density Apartme **Sale Conditions:** None **Schools:** , , * [Request Showing](#), [Photos](#), [History](#), [Maps](#), [Deed](#), [Watch List](#), [Tax Info](#)

DOM = Days on Market, Occ. = Occupancy, FL = Floor Number