

## Sandalwood 910 Ahana Street Unit 308, Honolulu 96814 \* Sandalwood \* \$410,000

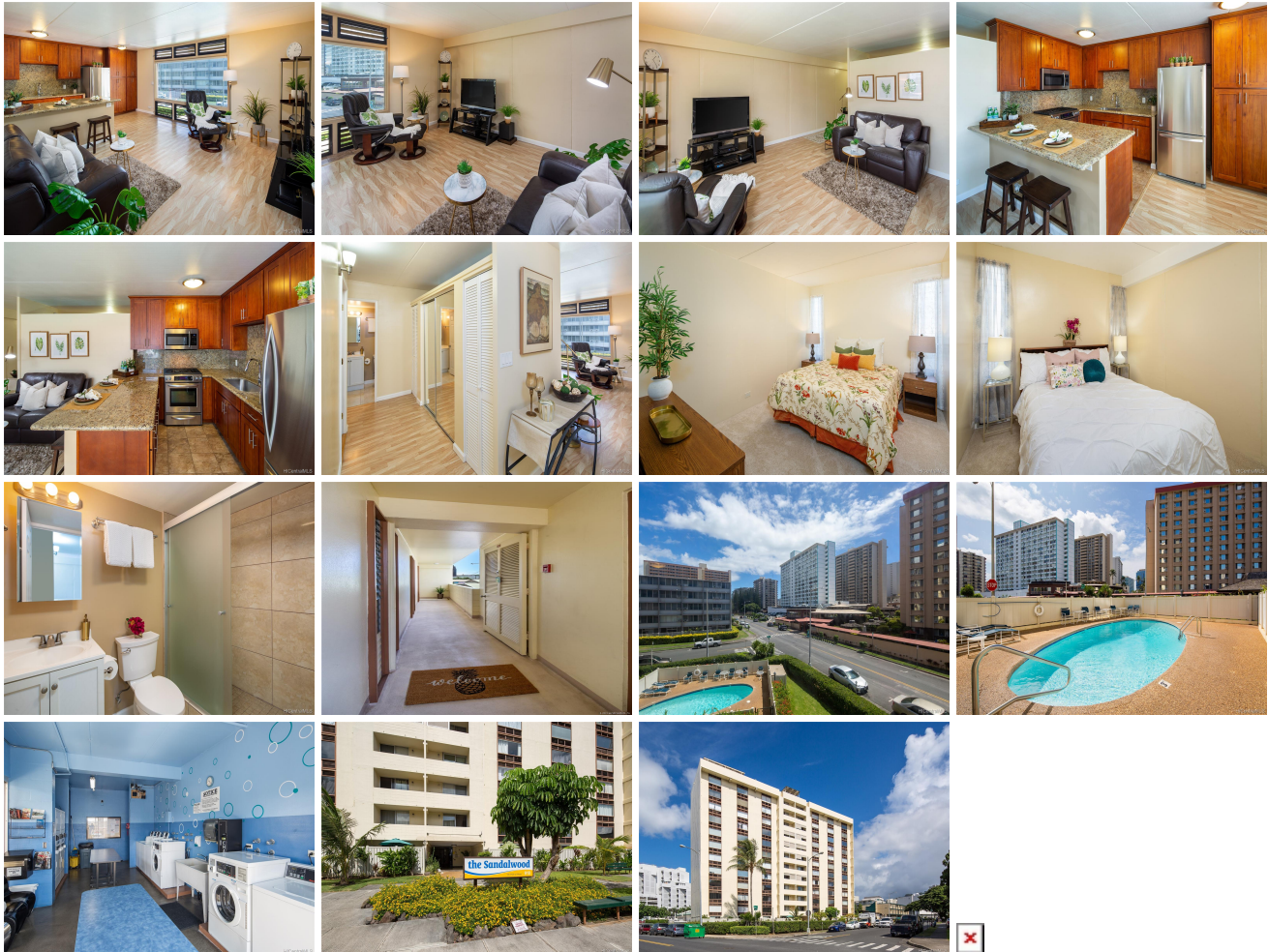
Sold Price: \$400,000	Sold Date: 08-24-2020	Sold Ratio: 98%
Beds: <b>2</b>	MLS#: <a href="#">202006341</a> , FS	Year Built: <b>1965</b>
Bath: <b>1/0</b>	Status: <b>Sold</b>	Remodeled: <b>2009</b>
Living Sq. Ft.: <b>780</b>	List Date & DOM: <b>03-13-2020 &amp; 96</b>	Total Parking: <b>1</b>
Land Sq. Ft.: <b>0</b>	Condition: <b>Above Average</b>	<a href="#">Assessed Value</a>
Lanai Sq. Ft.: <b>108</b>	Frontage: <b>Other</b>	Building: <b>\$316,000</b>
Sq. Ft. Other: <b>0</b>	Tax/Year: <b>\$124/2019</b>	Land: <b>\$108,100</b>
Total Sq. Ft. <b>888</b>	Neighborhood: <b>Pawaa</b>	Total: <b>\$424,100</b>
Maint./Assoc. <b>\$774 / \$0</b>	<a href="#">Flood Zone</a> : <b>Zone X - Tool</b>	Stories / CPR: <b>8-14 / No</b>
Parking: <b>Assigned, Covered - 1, Secured Entry, Street</b>		Frontage: <b>Other</b>

**Zoning: 13 - A-3 High Density Apartment**

**View: City, Garden**

**Public Remarks:** CLICK ON HOUSE OR MOVIE REEL ICON FOR 3D VIRTUAL TOUR! Long and private entry lanai welcomes you, with cool breezes, into this renovated and freshly painted metro charmer. Features open Living Room and Kitchen including laminated floors, granite counters, stainless appliances with a gas range oven, and shaker style cabinets with pantry! Ideal for ditching long and stressful commutes to/from work. Enjoy urban living in up and coming Midtown Ala Moana. Walk to a variety of nearby restaurants, Walmart, Walgreen's and Ala Moana shopping and beaches! Biki bike station across the street to explore the town at your leisure! VA approved; pet friendly; rooftop community laundry; gated, covered parking; large storage unit! All utilities (not internet) and common expenses included in maintenanc fee. **Sale Conditions:** None

**Schools:** [Kaahumanu](#), [Washington](#), [Mckinley](#) \* [Request Showing](#), [Photos](#), [History](#), [Maps](#), [Deed](#), [Watch List](#), [Tax Info](#)



Address	Price	Bd & Bth	Living / Avg.	Land   Avg.	Lanai	Occ.	FL	DOM
<a href="#">910 Ahana Street 308</a>	<a href="#">\$410,000</a>	2 & 1/0	780   \$526	0   \$inf	108	56%	3	96

Address	Tax   Maint.   Ass.	Assessed Land	Assessed Building	Assessed Total	Ratio	Year & Remodeled
<a href="#">910 Ahana Street 308</a>	\$124   \$774   \$0	\$108,100	\$316,000	\$424,100	97%	1965 & 2009

Address	Sold Price	Sold Date	Sold Ratio	Original Ratio	Sold Terms
<a href="#">910 Ahana Street 308</a>	\$400,000	08-24-2020	98%	98%	Conventional

[910 Ahana Street 308](#) - MLS#: [202006341](#) - CLICK ON HOUSE OR MOVIE REEL ICON FOR 3D VIRTUAL TOUR! Long and private entry lanai welcomes you, with cool breezes, into this renovated and freshly painted metro charmer. Features open Living Room and Kitchen including laminated floors, granite counters, stainless appliances with a gas range oven, and shaker style cabinets with pantry! Ideal for ditching long and stressful commutes to/from work. Enjoy urban living in up and coming Midtown Ala Moana. Walk to a variety of nearby restaurants, Walmart, Walgreen's and Ala Moana shopping and beaches! Biki bike station across the street to explore the town at your leisure! VA approved; pet friendly; rooftop community laundry; gated, covered parking; large storage unit! All utilities (not internet) and common expenses included in maintenanc fee.

**Region:** Metro **Neighborhood:** Pawaa **Condition:** Above Average **Parking:** Assigned, Covered - 1, Secured Entry, Street  
**Total Parking:** 1 **View:** City, Garden **Frontage:** Other **Pool:** **Zoning:** 13 - A-3 High Density Apartment **Sale Conditions:** None **Schools:** [Kaahumanu](#), [Washington](#), [Mckinley](#) \* [Request Showing](#), [Photos](#), [History](#), [Maps](#), [Deed](#), [Watch List](#), [Tax Info](#)

DOM = Days on Market, Occ. = Occupancy, FL = Floor Number