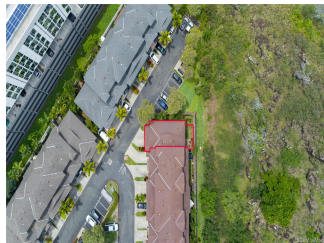


**Moana Kai 7012 Hawaii Kai Drive Unit 801, Honolulu 96825 \* Moana Kai \* \$875,000**

Sold Price: \$878,000	Sold Date: 05-22-2020	Sold Ratio: 100%
Beds: <b>3</b>	MLS#: <b>202007975, FS</b>	Year Built: <b>2005</b>
Bath: <b>2/1</b>	Status: <b>Sold</b>	Remodeled:
Living Sq. Ft.: <b>1,550</b>	List Date & DOM: <b>04-10-2020 &amp; 12</b>	Total Parking: <b>2</b>
Land Sq. Ft.: <b>0</b>	Condition: <b>Above Average</b>	<a href="#">Assessed Value</a>
Lanai Sq. Ft.: <b>360</b>	Frontage:	Building: <b>\$379,700</b>
Sq. Ft. Other: <b>0</b>	Tax/Year: <b>\$225/2020</b>	Land: <b>\$517,600</b>
Total Sq. Ft. <b>1,910</b>	Neighborhood: <b>West Marina</b>	Total: <b>\$897,300</b>
Maint./Assoc. <b>\$441 / \$0</b>	<a href="#">Flood Zone</a> : <b>Zone D - Tool</b>	Stories / CPR: <b>Two / No</b>
Parking: <b>Garage</b>	Frontage:	
<a href="#">Zoning</a> : <b>12 - A-2 Medium Density Apartme</b>	View: <b>Mountain</b>	

**Public Remarks:** Don't miss this NEW LISTING in the highly desired Moana Kai community! This well maintained, 3 bedroom, 2.5 bath, preferred corner end unit offers special features such as long driveway for ample parking, separate laundry room, 3rd bedroom with built in office space & murphy bed, and a fenced in back yard with added privacy. Other features include over 1,500 SQFT of spacious living space, plantation shutters, closet systems, Nest thermostat, refinished tub/shower, stainless steel appliances, and so much more. You will appreciate the convenience being minutes away from Costco, beaches, hiking trails, and many restaurants. This unit is truly one of a kind, and it won't last! **Sale Conditions:** None **Schools:** [Hahaione](#), [Niu Valley](#), [Kaiser](#) \* [Request Showing](#), [Photos](#), [History](#), [Maps](#), [Deed](#), [Watch List](#), [Tax Info](#)



Address	Price	Bd & Bth	Living / Avg.	Land   Avg.	Lanai	Occ.	FL	DOM
<a href="#">7012 Hawaii Kai Drive 801</a>	<a href="#">\$875,000</a>	3 & 2/1	1,550   \$565	0   \$inf	360	73%	1	12

Address	Tax   Maint.   Ass.	Assessed Land	Assessed Building	Assessed Total	Ratio	Year & Remodeled
<a href="#">7012 Hawaii Kai Drive 801</a>	\$225   \$441   \$0	\$517,600	\$379,700	\$897,300	98%	2005 & NA

Address	Sold Price	Sold Date	Sold Ratio	Original Ratio	Sold Terms
<a href="#">7012 Hawaii Kai Drive 801</a>	\$878,000	05-22-2020	100%	100%	Conventional

[7012 Hawaii Kai Drive 801](#) - MLS#: [202007975](#) - Don't miss this NEW LISTING in the highly desired Moana Kai community! This well maintained, 3 bedroom, 2.5 bath, preferred corner end unit offers special features such as long driveway for ample parking, separate laundry room, 3rd bedroom with built in office space & murphy bed, and a fenced in back yard with added privacy. Other features include over 1,500 SQFT of spacious living space, plantation shutters, closet systems, Nest thermostat, refinished tub/shower, stainless steel appliances, and so much more. You will appreciate the convenience being minutes away from Costco, beaches, hiking trails, and many restaurants. This unit is truly one of a kind, and it won't last! **Region:** Hawaii Kai **Neighborhood:** West Marina **Condition:** Above Average **Parking:** Garage **Total Parking:** 2 **View:** Mountain **Frontage:** Pool: **Zoning:** 12 - A-2 Medium Density Apartme **Sale Conditions:** None **Schools:** [Hahaione](#), [Niu Valley](#), [Kaiser](#) \* [Request Showing](#), [Photos](#), [History](#), [Maps](#), [Deed](#), [Watch List](#), [Tax Info](#)

DOM = Days on Market, Occ. = Occupancy, FL = Floor Number