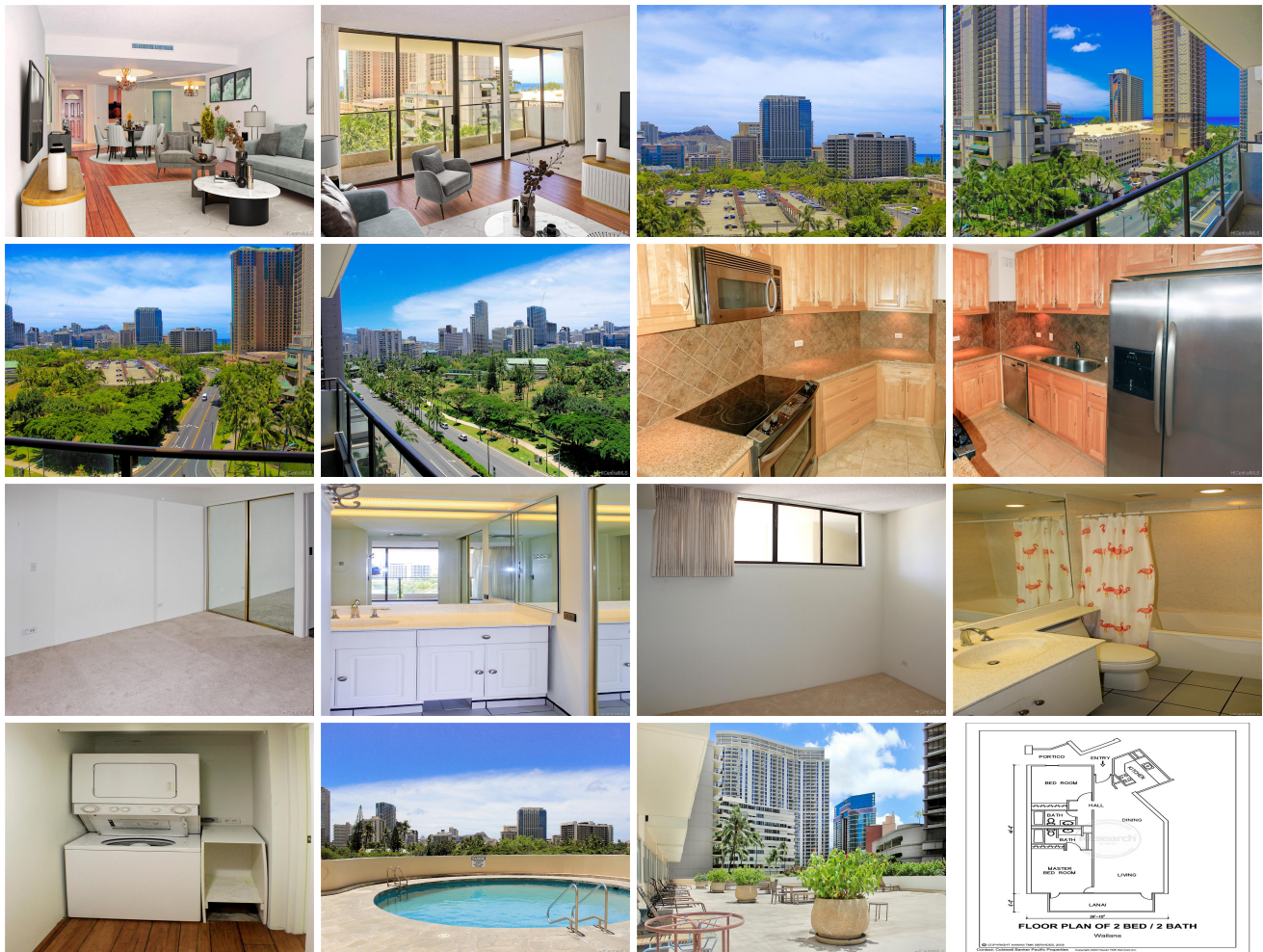


**Wailana At Waikiki 1860 Ala Moana Boulevard Unit 1102, Honolulu 96815 \* Wailana At Waikiki \* \$175,000 \* Originally \$200,000**

Sold Price: \$175,000	Sold Date: 03-05-2021	Sold Ratio: 100%
Beds: <b>2</b>	MLS#: <a href="#">202008735</a> , LH	Year Built: <b>1970</b>
Bath: <b>2/0</b>	Status: <b>Sold</b>	Remodeled:
Living Sq. Ft.: <b>1,171</b>	List Date & DOM: <b>04-23-2020 &amp; 206</b>	Total Parking: <b>1</b>
Land Sq. Ft.: <b>43,124</b>	Condition: <b>Above Average</b>	<a href="#">Assessed Value</a>
Lanai Sq. Ft.: <b>124</b>	Frontage:	Building: <b>\$474,700</b>
Sq. Ft. Other: <b>0</b>	Tax/Year: <b>\$154/2020</b>	Land: <b>\$21,200</b>
Total Sq. Ft. <b>1,295</b>	Neighborhood: <b>Waikiki</b>	Total: <b>\$495,200</b>
Maint./Assoc. <b>\$1,169 / \$0</b>	<a href="#">Flood Zone</a> : <b>Zone AE - Tool</b>	Stories / CPR: <b>One / No</b>
Parking: <b>Assigned, Covered - 1, Secured Entry, Street</b>	Frontage:	
<a href="#">Zoning</a> : <b>X2 - Apartment Precinct</b>	View: <b>City, Diamond Head</b>	

**Public Remarks:** Back on the Market after a long escrow. Stunning views of Diamond Head and the ocean. This PET FRIENDLY, spacious 11th floor Waikiki condo overlooks Fort DeRussy Park. Conveniently located across the street from Hilton Hawaiian Village, Waikiki Beach, Ala Moana Shopping Center and the many shops and restaurants near by. Washer/dryer and central air conditioning. Remodeled kitchen with stainless steel appliances, granite counter tops and a travertine marble backsplash. Electricity is submetered. Parking is in secured garage. Lease has been extended to 2069. Bank has approved price. **Sale Conditions:** Short Sale **Schools:** [Jefferson](#), [Washington](#), [Kaimuki](#) \* [Request Showing](#), [Photos](#), [History](#), [Maps](#), [Deed](#), [Watch List](#), [Tax Info](#)



Address	Price	Bd & Bth	Living / Avg.	Land   Avg.	Lanai	Occ.	FL	DOM
<a href="#">1860 Ala Moana Boulevard 1102</a>	<b>\$175,000 LH</b>	2 & 2/0	1,171   \$149	43,124   \$4	124	55%	11	206

Address	Tax   Maint.   Ass.	Assessed Land	Assessed Building	Assessed Total	Ratio	Year & Remodeled
<a href="#">1860 Ala Moana Boulevard 1102</a>	\$154   \$1,169   \$0	\$21,200	\$474,700	\$495,200	35%	1970 & NA

Address	Sold Price	Sold Date	Sold Ratio	Original Ratio	Sold Terms
<a href="#">1860 Ala Moana Boulevard 1102</a>	\$175,000	03-05-2021	100%	88%	Cash

[1860 Ala Moana Boulevard 1102](#) - MLS#: [202008735](#) - Original price was \$200,000 - Back on the Market after a long escrow. Stunning views of Diamond Head and the ocean. This PET FRIENDLY, spacious 11th floor Waikiki condo overlooks Fort DeRussy Park. Conveniently located across the street from Hilton Hawaiian Village, Waikiki Beach, Ala Moana Shopping Center and the many shops and restaurants near by. Washer/dryer and central air conditioning. Remodeled kitchen with stainless steel appliances, granite counter tops and a travertine marble backsplash. Electricity is submetered. Parking is in secured garage. Lease has been extended to 2069. Bank has approved price. **Region:** Metro **Neighborhood:** Waikiki **Condition:** Above Average **Parking:** Assigned, Covered - 1, Secured Entry, Street **Total Parking:** 1 **View:** City, Diamond Head **Frontage:** **Pool:** **Zoning:** X2 - Apartment Precinct **Sale Conditions:** Short Sale **Schools:** [Jefferson](#), [Washington](#), [Kaimuki](#) \* [Request Showing](#), [Photos](#), [History](#), [Maps](#), [Deed](#), [Watch List](#), [Tax Info](#)

DOM = Days on Market, Occ. = Occupancy, FL = Floor Number