

Kaimala Marina 444 Lunalilo Home Road Unit 222, Honolulu 96825 * Kaimala Marina *

\$779,000

Sold Price: \$779,000
Beds: **3**
Bath: **2/1**
Living Sq. Ft.: **1,281**
Land Sq. Ft.: **0**
Lanai Sq. Ft.: **329**
Sq. Ft. Other: **0**
Total Sq. Ft. **1,610**
Maint./Assoc. **\$741 / \$0**
Parking: **Open - 2**

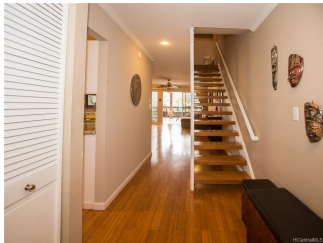
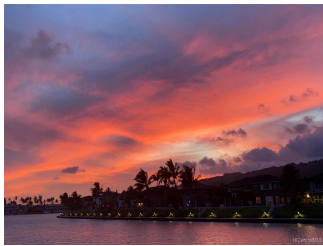
Sold Date: 09-11-2020
MLS#: **202011379, FS**
Status: **Sold**
List Date & DOM: **05-19-2020 & 77**
Condition: **Excellent**
Frontage: **Marina, Waterfront**
Tax/Year: **\$196/2019**
Neighborhood: **West Marina**
Flood Zone: Zone AE - Tool

Sold Ratio: 100%
Year Built: **1972**
Remodeled:
Total Parking: **2**
Assessed Value
Building: **\$364,800**
Land: **\$389,400**
Total: **\$754,000**
Stories / CPR: **Two / No**

Frontage: **Marina, Waterfront**
View: **Marina/Canal, Mountain, Sunrise, Sunset**

Zoning: 11 - A-1 Low Density Apartment

Public Remarks: Waterfront Townhome. Boat dock is assigned thru Association. Beautiful marina and sunset views and a large lanai and upstairs balcony to enjoy them from. Two assigned parking places, plus a storage unit, pet-friendly. Project VA approved. The bamboo floor throughout, plus the ceiling fans in every room, all three bedrooms have window AC, Jacuzzi in one bathroom, New appliances, On site manager. The Association Board is excellent with managing project well with more than adequate reserves. POOL, BBQ area, Dog park, access to kayak bike parking It has free access to a beautiful waterfront dog park .2 blocks from highly-rated Kaiser High School and very close proximity to beautiful Hawaii Kai beaches, public park, library, shopping center . VIDEO : <https://vimeo.com/420550864> **Sale Conditions:** None **Schools:** [Koko Head](#), [Niu Valley](#), [Kaiser](#) * [Request Showing](#), [Photos](#), [History](#), [Maps](#), [Deed](#), [Watch List](#), [Tax Info](#)





Address	Price	Bd & Bth	Living / Avg.	Land Avg.	Lanai	Occ.	FL	DOM
444 Lunalilo Home Road 222	\$779,000	3 & 2/1	1,281 \$608	0 \$inf	329	75%	2	77

Address	Tax Maint. Ass.	Assessed Land	Assessed Building	Assessed Total	Ratio	Year & Remodeled
444 Lunalilo Home Road 222	\$196 \$741 \$0	\$389,400	\$364,800	\$754,000	103%	1972 & NA

Address	Sold Price	Sold Date	Sold Ratio	Original Ratio	Sold Terms
444 Lunalilo Home Road 222	\$779,000	09-11-2020	100%	100%	Conventional

[444 Lunalilo Home Road 222](#) - MLS#: [202011379](#) - Waterfront Townhome. Boat dock is assigned thru Association. Beautiful marina and sunset views and a large lanai and upstairs balcony to enjoy them from. Two assigned parking places, plus a storage unit, pet-friendly. Project VA approved. The bamboo floor throughout, plus the ceiling fans in every room, all three bedrooms have window AC , Jacuzzi in one bathroom, New appliances, On site manager. The Association Board is excellent with managing project well with more than adequate reserves. POOL, BBQ area, Dog park , access to kayak bike parking It has free access to a beautiful waterfront dog park .2 blocks from highly-rated Kaiser High School and very close proximity to beautiful Hawaii Kai beaches, public park, library, shopping center . VIDEO : <https://vimeo.com/420550864> **Region:** Hawaii Kai **Neighborhood:** West Marina **Condition:** Excellent **Parking:** Open - 2 **Total Parking:** 2 **View:** Marina/Canal, Mountain, Sunrise, Sunset **Frontage:** Marina,Waterfront **Pool:** **Zoning:** 11 - A-1 Low Density Apartment **Sale Conditions:** None **Schools:** [Koko Head](#), [Niu Valley](#), [Kaiser](#) * [Request Showing](#), [Photos](#), [History](#), [Maps](#), [Deed](#), [Watch List](#), [Tax Info](#)

DOM = Days on Market, Occ. = Occupancy, FL = Floor Number