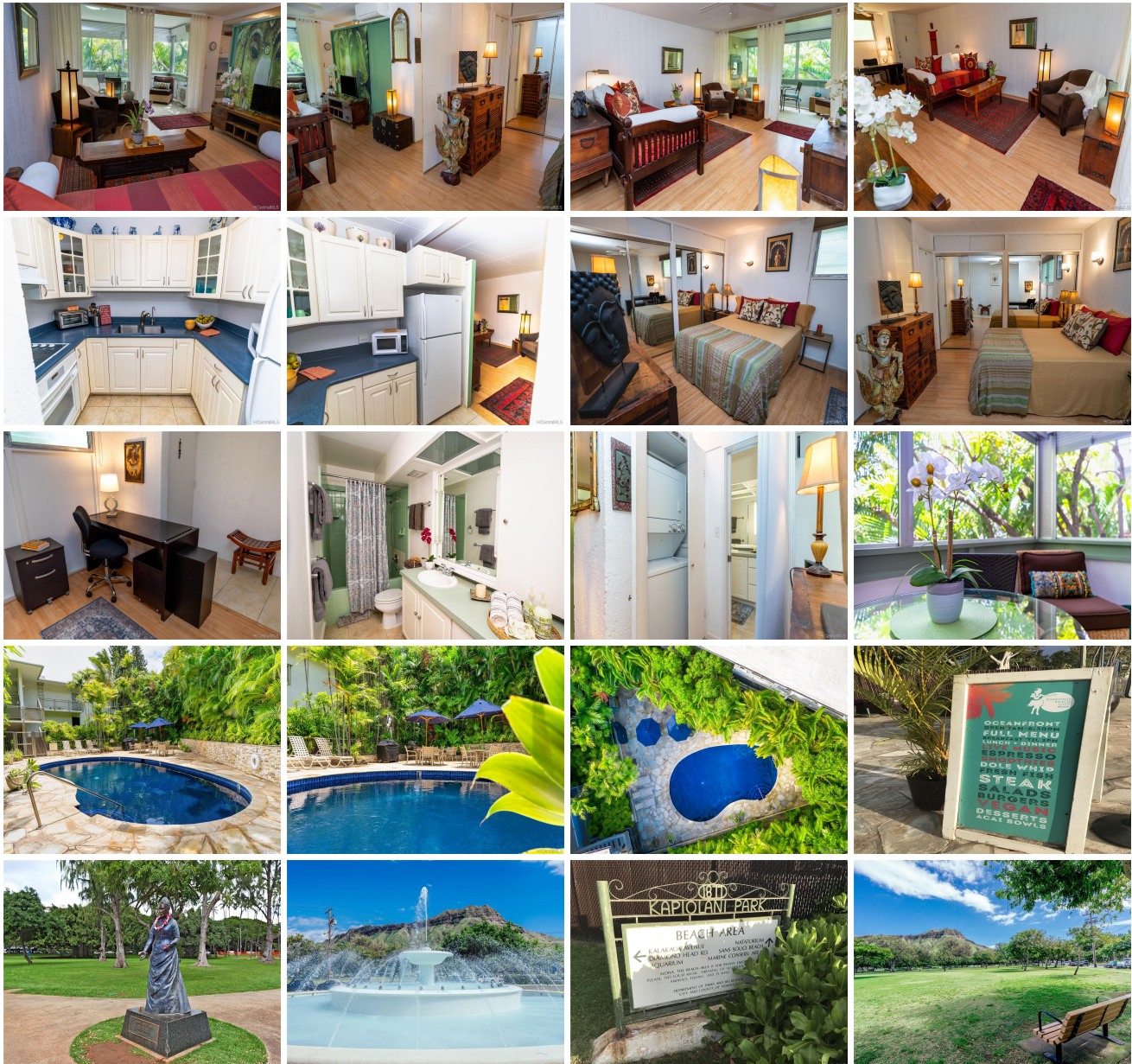


Diamond Head Gardens 3055 Pualei Circle Unit A204, Honolulu 96815 * Diamond Head

Gardens * \$549,800

Sold Price: \$525,000	Sold Date: 08-25-2020	Sold Ratio: 95%
Beds: 1	MLS#: 202014186, FS	Year Built: 1960
Bath: 1/0	Status: Sold	Remodeled: 2012
Living Sq. Ft.: 590	List Date & DOM: 06-18-2020 & 35	Total Parking: 1
Land Sq. Ft.: 31,015	Condition: Above Average, Excellent	Assessed Value
Lanai Sq. Ft.: 108	Frontage:	Building: \$167,400
Sq. Ft. Other: 0	Tax/Year: \$139/2019	Land: \$318,000
Total Sq. Ft. 698	Neighborhood: Diamond Head	Total: \$486,300
Maint./Assoc. \$271 / \$0	Flood Zone : Zone X - Tool	Stories / CPR: Three / No
Parking: Assigned, Open - 1, Street	Frontage:	
Zoning : 12 - A-2 Medium Density Apartme	View: Garden	

Public Remarks: Diamond Head Gardens is often considered in the top three best communities on the circle, for its tropical ambiance & sound management. Second floor condos are most prime for their privacy; this is the first one bedroom available in many years. Your best life awaits in the Diamond Head neighborhood with its surrounding historic features and healthy lifestyle choices -- walk, hike, bike; attend farmer's markets; enjoy cafés & eateries; beaches & surfing; personal services & health care. You will appreciate the peacefulness of this home overlooking the pool and gardens. Upgrades: laminate flooring, screened-in lanai, split a/c, on-demand water heater, laundry center. Low, low HOA fee, too! Scores: Walk 52; transit 71; bike 39. Pet-friendly; dogs 30# max. Vacant, sanitized, easy to visit. **Sale Conditions:** None **Schools:** [Waikiki](#), [Kaimuki](#), [Kaimuki](#) * [Request Showing](#), [Photos](#), [History](#), [Maps](#), [Deed](#), [Watch List](#), [Tax Info](#)





Address	Price	Bd & Bth	Living / Avg.	Land Avg.	Lanai	Occ.	FL	DOM
3055 Pualei Circle A204	\$549,800	1 & 1/0	590 \$932	31,015 \$18	108	43%	2	35

Address	Tax Maint. Ass.	Assessed Land	Assessed Building	Assessed Total	Ratio	Year & Remodeled
3055 Pualei Circle A204	\$139 \$271 \$0	\$318,000	\$167,400	\$486,300	113%	1960 & 2012

Address	Sold Price	Sold Date	Sold Ratio	Original Ratio	Sold Terms
3055 Pualei Circle A204	\$525,000	08-25-2020	95%	95%	Conventional

[3055 Pualei Circle A204](#) - MLS#: [202014186](#) - Diamond Head Gardens is often considered in the top three best communities on the circle, for its tropical ambiance & sound management. Second floor condos are most prime for their privacy; this is the first one bedroom available in many years. Your best life awaits in the Diamond Head neighborhood with its surrounding historic features and healthy lifestyle choices -- walk, hike, bike; attend farmer's markets; enjoy cafés & eateries; beaches & surfing; personal services & health care. You will appreciate the peacefulness of this home overlooking the pool and gardens. Upgrades: laminate flooring, screened-in lanai, split a/c, on-demand water heater, laundry center. Low, low HOA fee, too! Scores: Walk 52; transit 71; bike 39. Pet-friendly; dogs 30# max. Vacant, sanitized, easy to visit. **Region:** Diamond Head **Neighborhood:** Diamond Head **Condition:** Above Average, Excellent **Parking:** Assigned, Open - 1, Street **Total Parking:** 1 **View:** Garden **Frontage:** Pool: **Zoning:** 12 - A-2 Medium Density Apartme **Sale Conditions:** None **Schools:** [Waikiki](#), [Kaimuki](#), [Kaimuki](#) * [Request Showing](#), [Photos](#), [History](#), [Maps](#), [Deed](#), [Watch List](#), [Tax Info](#)

DOM = Days on Market, Occ. = Occupancy, FL = Floor Number