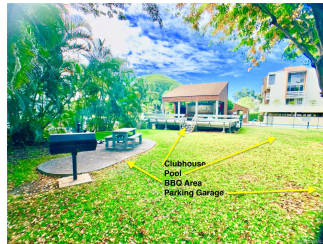
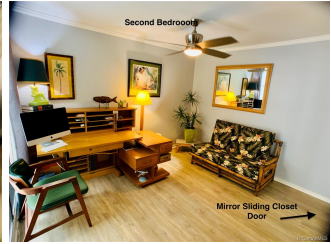
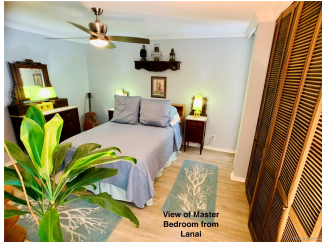


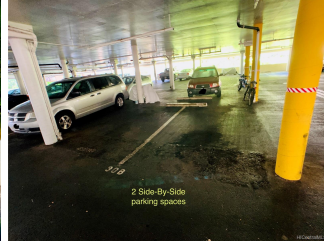
## **Gardenia Manor 333 Aolaa Street Unit 210, Kailua 96734 \* Gardenia Manor \* \$569,000**

Sold Price: \$575,000	Sold Date: 08-07-2020	Sold Ratio: 101%
Beds: <b>2</b>	MLS#: <a href="#"><b>202014601</b></a> , FS	Year Built: <b>1974</b>
Bath: <b>2/0</b>	Status: <b>Sold</b>	Remodeled:
Living Sq. Ft.: <b>944</b>	List Date & DOM: <b>06-24-2020 &amp; 2</b>	Total Parking: <b>2</b>
Land Sq. Ft.: <b>130,680</b>	Condition: <b>Excellent</b>	<a href="#">Assessed Value</a>
Lanai Sq. Ft.: <b>236</b>	Frontage:	Building: <b>\$360,400</b>
Sq. Ft. Other: <b>0</b>	Tax/Year: <b>\$162/2019</b>	Land: <b>\$195,900</b>
Total Sq. Ft. <b>1,180</b>	Neighborhood: <b>Kailua Town</b>	Total: <b>\$556,300</b>
Maint./Assoc. <b>\$550 / \$0</b>	<a href="#">Flood Zone</a> : <b>Zone X - Tool</b>	Stories / CPR: <b>One / No</b>
Parking: <b>Assigned, Covered - 2, Guest, Street</b>	Frontage:	
<a href="#">Zoning</a> : <b>12 - A-2 Medium Density Apartme</b>	View: <b>None</b>	

**Public Remarks:** MUST follow COVID-19 protocol PLS USE MASK & GLOVES. Gorgeous 944 sq ft 2 bedrooms, 2 FULL bath, 2 covered side-by-side parking in World-Renowned Kailua. Except for custom kitchen ceramic floor tiling, unit features NEW luxury wood grain vinyl flooring throughout. Kitchen features Martha Stewart cabinets, quartz counter tops, open kitchen to living room concept. HUGE 236 sq ft lanai to furnish as you wish (flexibility). Full size W/D, custom bi-fold closet doors. Enjoy all that Kailua has to offer; close to shopping, schools, famous beaches, Kailua district park. Amenities include BBQ area, pool, club house, relaxing walkway, benches, pets allowed (verify). Monthly property tax reflects 2019 assessment **Sale**

**Conditions:** None **Schools:** , \* [Request Showing](#), [Photos](#), [History](#), [Maps](#), [Deed](#), [Watch List](#), [Tax Info](#)





Address	Price	Bd & Bth	Living / Avg.	Land   Avg.	Lanai	Occ.	FL	DOM
<a href="#">333 Aoloo Street 210</a>	<a href="#">\$569,000</a>	2 & 2/0	944   \$603	130,680   \$4	236	58%	2	2

Address	Tax   Maint.   Ass.	Assessed Land	Assessed Building	Assessed Total	Ratio	Year & Remodeled
<a href="#">333 Aoloo Street 210</a>	\$162   \$550   \$0	\$195,900	\$360,400	\$556,300	102%	1974 & NA

Address	Sold Price	Sold Date	Sold Ratio	Original Ratio	Sold Terms
<a href="#">333 Aoloo Street 210</a>	\$575,000	08-07-2020	101%	101%	Cash

<p><a href="#">333 Aoloo Street 210</a> - MLS#: <a href="#">202014601</a> - MUST follow COVID-19 protocol PLS USE MASK &amp; GLOVES. Gorgeous 944 sq ft 2 bedrooms, 2 FULL bath, 2 covered side-by-side parking in World-Renowned Kailua. Except for custom kitchen ceramic floor tiling, unit features NEW luxury wood grain vinyl flooring throughout. Kitchen features Martha Stewart cabinets, quartz counter tops, open kitchen to living room concept. HUGE 236 sq ft lanai to furnish as you wish (flexibility). Full size W/D, custom bi-fold closet doors. Enjoy all that Kailua has to offer; close to shopping, schools, famous beaches, Kailua district park. Amenities include BBQ area, pool, club house, relaxing walkway, benches, pets allowed (verify). Monthly property tax reflects 2019 assessment <b>Region:</b> Kailua <b>Neighborhood:</b> Kailua Town <b>Condition:</b> Excellent <b>Parking:</b> Assigned, Covered - 2, Guest, Street <b>Total Parking:</b> 2 <b>View:</b> None <b>Frontage:</b> <b>Pool:</b> <b>Zoning:</b> 12 - A-2 Medium Density Apartme <b>Sale Conditions:</b> None <b>Schools:</b> , , * <a href="#">Request Showing</a>, <a href="#">Photos</a>, <a href="#">History</a>, <a href="#">Maps</a>, <a href="#">Deed</a>, <a href="#">Watch List</a>, <a href="#">Tax Info</a></p>						
--	--	--	--	--	--	--

DOM = Days on Market, Occ. = Occupancy, FL = Floor Number