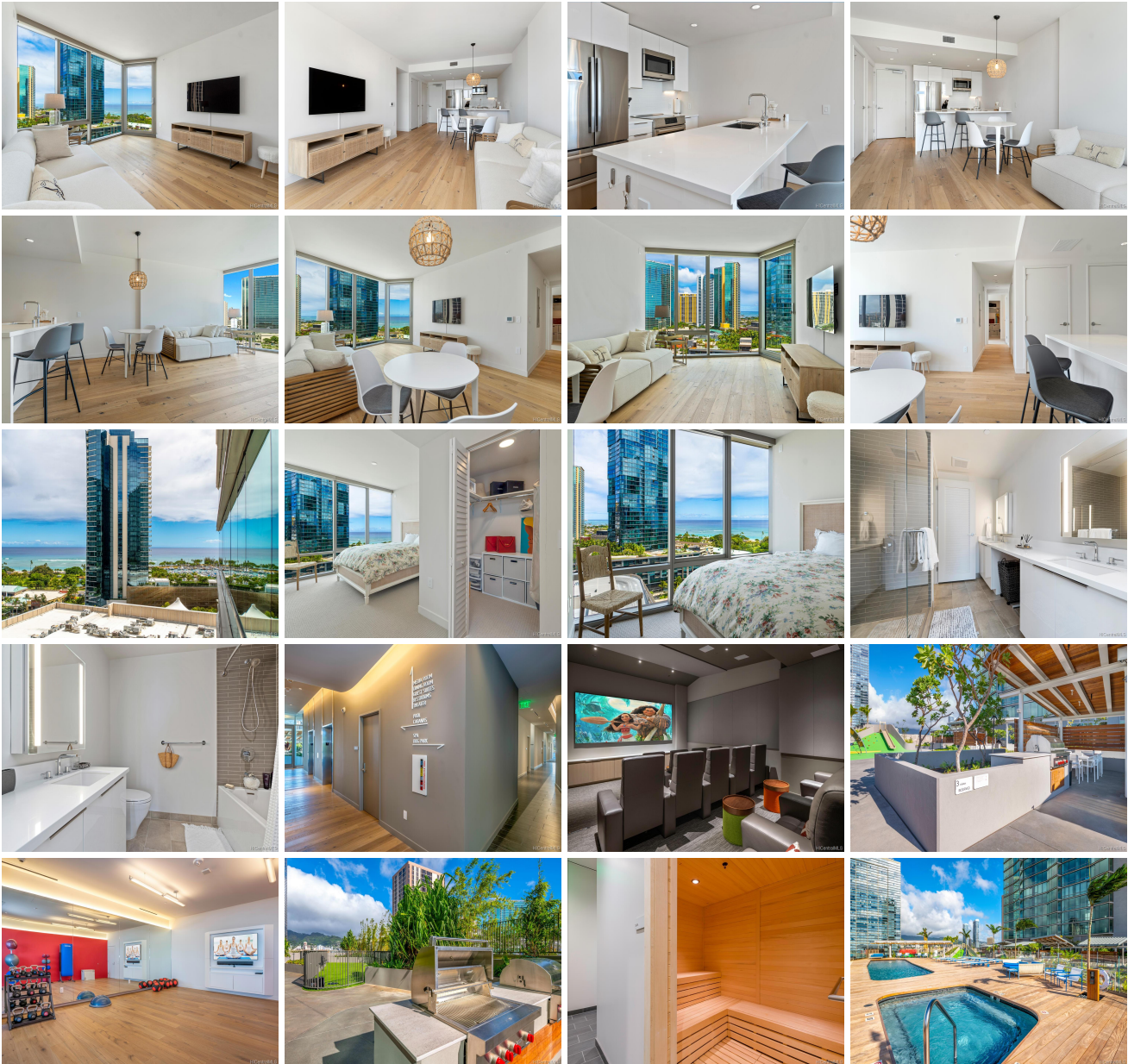


**Ae'o 1001 Queen Street Unit 1402, Honolulu 96814 \* Ae'o \* \$1,295,000**

Beds: <b>2</b>	MLS#: <b>202015241, FS</b>	Year Built: <b>2018</b>
Bath: <b>2/0</b>	Status: <b>Cancelled</b>	Remodeled:
Living Sq. Ft.: <b>983</b>	List Date & DOM: <b>07-15-2020 &amp; 204</b>	Total Parking: <b>2</b>
Land Sq. Ft.: <b>0</b>	Condition: <b>Excellent</b>	<a href="#">Assessed Value</a>
Lanai Sq. Ft.: <b>0</b>	Frontage: <b>Other</b>	Building: <b>\$266,200</b>
Sq. Ft. Other: <b>0</b>	Tax/Year: <b>\$96/2019</b>	Land: <b>\$64,500</b>
Total Sq. Ft. <b>983</b>	Neighborhood: <b>Kakaako</b>	Total: <b>\$330,700</b>
Maint./Assoc. <b>\$889 / \$26</b>	<a href="#">Flood Zone</a> : <b>Zone AE - Tool</b>	Stories / CPR: <b>21+ / No</b>
Parking: <b>Assigned, Covered - 2, Secured Entry, Tandem</b>	Frontage: <b>Other</b>	
<a href="#">Zoning</a> : <b>Kak - Kakaako Community Development Project</b>	View: <b>City, Mountain, Ocean</b>	

**Public Remarks:** Incredible value for this preferred 02 stack positioned on the Diamond Head side of building. Fantastic views of ocean, city and mountain from living room and both bedrooms. High quality appliances, flooring and fixtures, must see to appreciate. Ae'o features top tier services and resort style amenities. Direct access to Whole Foods. Live, play, eat, shop and relax all within short walking distance in the highly desired Kakaako master planned community! Unit also includes a deeded, secured storage space. Click on virtual tour icon for interactive walk-through. **Sale Conditions:** None **Schools:** , ,  
\* [Request Showing](#), [Photos](#), [History](#), [Maps](#), [Deed](#), [Watch List](#), [Tax Info](#)





Address	Price	Bd & Bth	Living / Avg.	Land   Avg.	Lanai	Occ.	FL	DOM
<a href="#">1001 Queen Street 1402</a>	<a href="#">\$1,295,000</a>	2 & 2/0	983   \$1,317	0   \$inf	0	63%	14	204

Address	Tax   Maint.   Ass.	Assessed Land	Assessed Building	Assessed Total	Ratio	Year & Remodeled
<a href="#">1001 Queen Street 1402</a>	\$96   \$889   \$26	\$64,500	\$266,200	\$330,700	392%	2018 & NA

[1001 Queen Street 1402](#) - MLS#: [202015241](#) - Incredible value for this preferred 02 stack positioned on the Diamond Head side of building. Fantastic views of ocean, city and mountain from living room and both bedrooms. High quality appliances, flooring and fixtures, must see to appreciate. Ae'o features top tier services and resort style amenities. Direct access to Whole Foods. Live, play, eat, shop and relax all within short walking distance in the highly desired Kakaako master planned community! Unit also includes a deeded, secured storage space. Click on virtual tour icon for interactive walk-through.

**Region:** Metro **Neighborhood:** Kakaako **Condition:** Excellent **Parking:** Assigned, Covered - 2, Secured Entry, Tandem **Total Parking:** 2 **View:** City, Mountain, Ocean **Frontage:** Other **Pool:** **Zoning:** Kak - Kakaako Community Development Project **Sale Conditions:** None **Schools:** , , \* [Request Showing](#), [Photos](#), [History](#), [Maps](#), [Deed](#), [Watch List](#), [Tax Info](#)

DOM = Days on Market, Occ. = Occupancy, FL = Floor Number