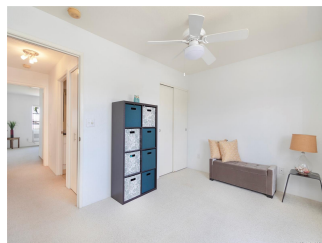
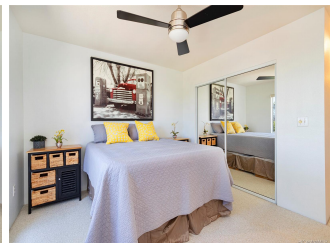
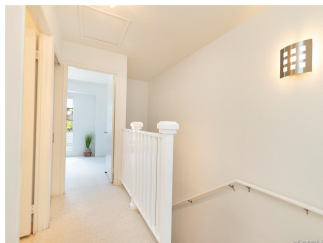
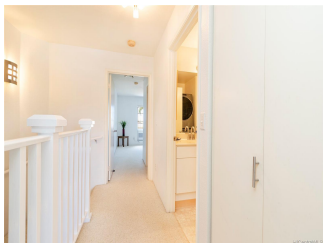
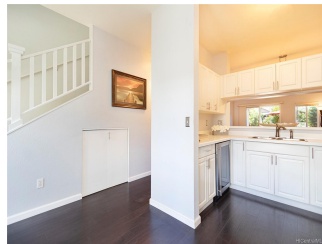
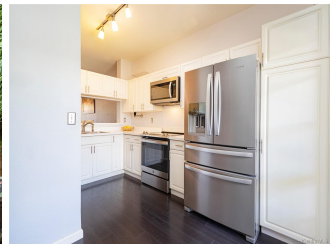
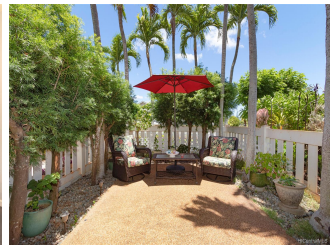


Village On The Green 1A 94-730 Lumiauau Street Unit HH4, Waipahu 96797 * Village On

The Green 1A * \$515,000

Sold Price: \$510,000	Sold Date: 08-25-2020	Sold Ratio: 99%
Beds: 2	MLS#: 202015329, FS	Year Built: 1995
Bath: 2/1	Status: Sold	Remodeled: 2010
Living Sq. Ft.: 987	List Date & DOM: 07-02-2020 & 8	Total Parking: 2
Land Sq. Ft.: 463,043	Condition: Excellent	Assessed Value
Lanai Sq. Ft.: 100	Frontage: Other	Building: \$249,000
Sq. Ft. Other: 0	Tax/Year: \$122/2020	Land: \$277,100
Total Sq. Ft. 1,087	Neighborhood: Waikale	Total: \$526,100
Maint./Assoc. \$498 / \$48	Flood Zone : Zone D - Tool	Stories / CPR: Two / No
Parking: Covered - 1, Guest, Open - 1	Frontage: Other	
Zoning : 05 - R-5 Residential District	View: Garden	

Public Remarks: This 2 story townhouse with a modern flair has it all. This unit features a large kitchen with new range, wine fridge, newer washer, dryer, and refrigerator. Laminate floors on the main living level lead out to a lovely enclosed courtyard with greenery and finished stone surface. Generous pet policy with no weight limit (verify) in a well planned community. Waikale Outlet Shopping Center, restaurants, stores, golf course are all within a few minutes drive. Centrally located for an easy commute to military bases. Interior has been freshly painted and comes with two ample storage closets. It's move in ready for your enjoyment! **Sale Conditions:** None **Schools:** [Waikale](#), [Waipahu](#), [Waipahu](#) * [Request Showing](#), [Photos](#), [History](#), [Maps](#), [Deed](#), [Watch List](#), [Tax Info](#)





Address	Price	Bd & Bth	Living / Avg.	Land Avg.	Lanai	Occ.	FL	DOM
94-730 Lumiauau Street HH4	\$515,000	2 & 2/1	987 \$522	463,043 \$1	100	73%	1	8

Address	Tax Maint. Ass.	Assessed Land	Assessed Building	Assessed Total	Ratio	Year & Remodeled
94-730 Lumiauau Street HH4	\$122 \$498 \$48	\$277,100	\$249,000	\$526,100	98%	1995 & 2010

Address	Sold Price	Sold Date	Sold Ratio	Original Ratio	Sold Terms
94-730 Lumiauau Street HH4	\$510,000	08-25-2020	99%	99%	Conventional

[94-730 Lumiauau Street HH4](#) - MLS#: [202015329](#) - This 2 story townhouse with a modern flair has it all. This unit features a large kitchen with new range, wine fridge, newer washer, dryer, and refrigerator. Laminate floors on the main living level lead out to a lovely enclosed courtyard with greenery and finished stone surface. Generous pet policy with no weight limit (verify) in a well planned community. Waialeale Outlet Shopping Center, restaurants, stores, golf course are all within a few minutes drive. Centrally located for an easy commute to military bases. Interior has been freshly painted and comes with two ample storage closets. It's move in ready for your enjoyment! **Region:** Waipahu **Neighborhood:** Waialeale **Condition:** Excellent **Parking:** Covered - 1, Guest, Open - 1 **Total Parking:** 2 **View:** Garden **Frontage:** Other **Pool:** **Zoning:** 05 - R-5 Residential District **Sale Conditions:** None **Schools:** [Waialeale](#), [Waipahu](#), [Waipahu](#) * [Request Showing](#), [Photos](#), [History](#), [Maps](#), [Deed](#), [Watch List](#), [Tax Info](#)

DOM = Days on Market, Occ. = Occupancy, FL = Floor Number