

Banyan Tree Plaza 1212 Punahou Street Unit 2702, Honolulu 96826 * Banyan Tree Plaza *

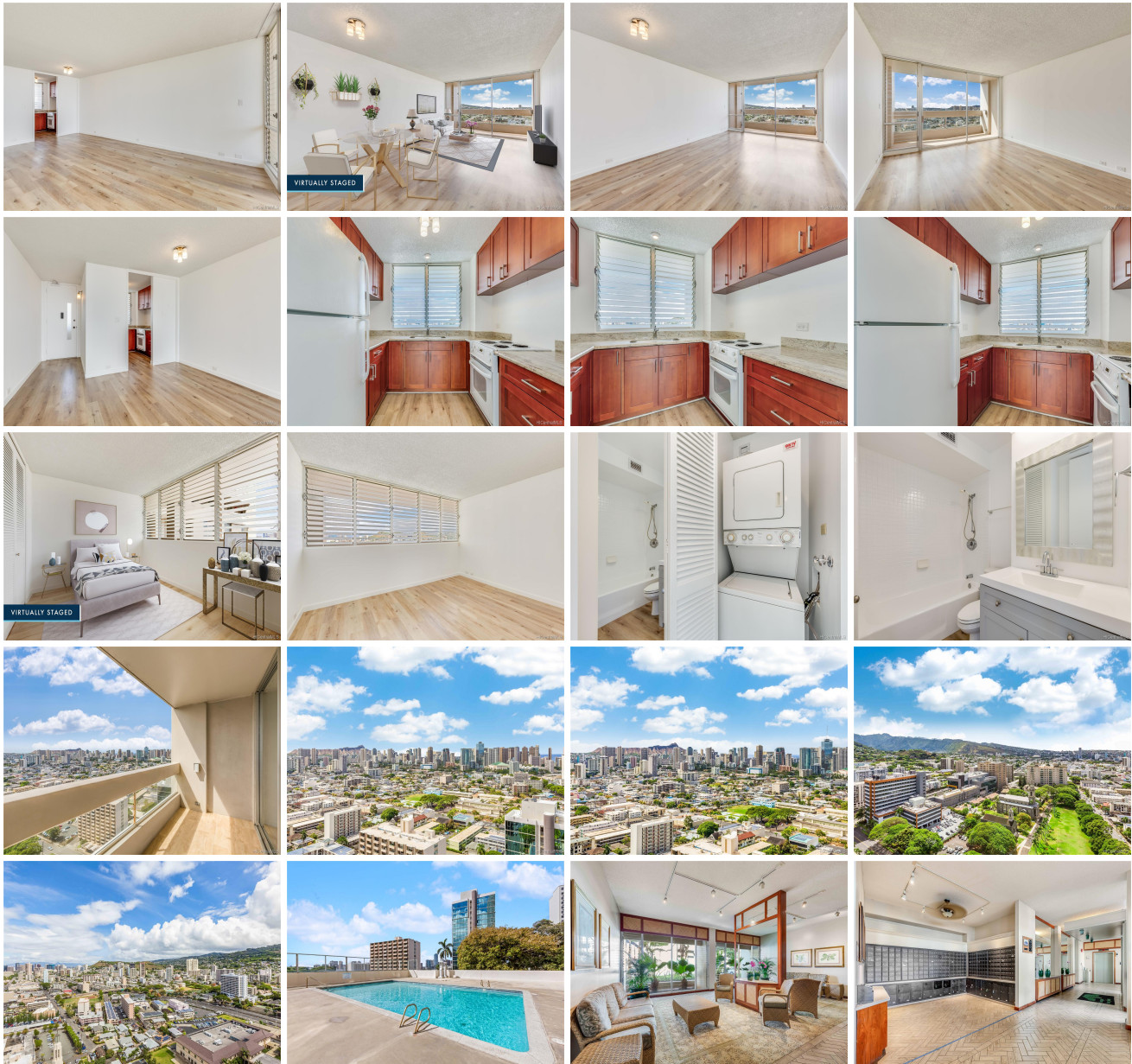
\$409,000 * Originally \$429,000

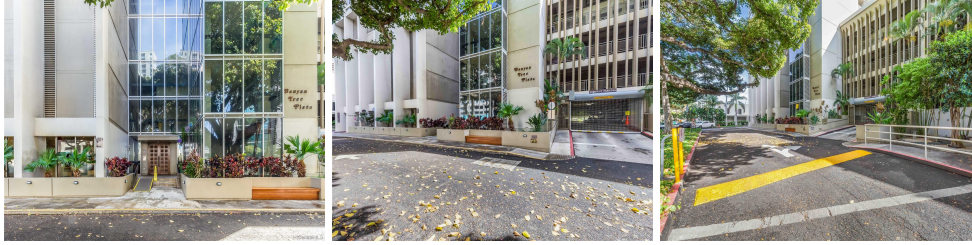
Sold Price: \$405,000	Sold Date: 11-13-2020	Sold Ratio: 99%
Beds: 1	MLS#: 202017089, FS	Year Built: 1974
Bath: 1/0	Status: Sold	Remodeled: 2020
Living Sq. Ft.: 715	List Date & DOM: 07-14-2020 & 86	Total Parking: 1
Land Sq. Ft.: 0	Condition: Above Average, Excellent	Assessed Value
Lanai Sq. Ft.: 78	Frontage: Other	Building: \$382,400
Sq. Ft. Other: 0	Tax/Year: \$125/2020	Land: \$47,100
Total Sq. Ft. 793	Neighborhood: Punahou	Total: \$429,500
Maint./Assoc. \$696 / \$0	Flood Zone : Zone X - Tool	Stories / CPR: 21+ / No
Parking: Assigned, Covered - 1, Guest, Secured Entry	Frontage: Other	

[Zoning](#): **13 - A-3 High Density Apartment**

View: **City, Diamond Head, Mountain**

Public Remarks: SEVERAL PHOTOS ARE VIRTUALLY STAGED! Come and see this newly renovated high floor condo unit with City and Diamond Head views. This one bedroom unit is larger than most at over 700 sq. ft. of living space plus a large usable lanai. The home offers lots of natural light and cool breezes. New paint, light fixtures, vinyl plank flooring, vanity and re-glazed bath tub are just a few of the recent improvements. Amenities include a pool and meeting room. Ample guest parking is available on the 5th floor. Not pet-friendly. **Sale Conditions:** None **Schools:** , , * [Request Showing](#), [Photos](#), [History](#), [Maps](#), [Deed](#), [Watch List](#), [Tax Info](#)





Address	Price	Bd & Bth	Living / Avg.	Land Avg.	Lanai	Occ.	FL	DOM
1212 Punahou Street 2702	\$409,000	1 & 1/0	715 \$572	0 \$inf	78	55%	27	86

Address	Tax Maint. Ass.	Assessed Land	Assessed Building	Assessed Total	Ratio	Year & Remodeled
1212 Punahou Street 2702	\$125 \$696 \$0	\$47,100	\$382,400	\$429,500	95%	1974 & 2020

Address	Sold Price	Sold Date	Sold Ratio	Original Ratio	Sold Terms
1212 Punahou Street 2702	\$405,000	11-13-2020	99%	94%	Conventional 0

[1212 Punahou Street 2702](#) - MLS#: [202017089](#) - Original price was \$429,000 - SEVERAL PHOTOS ARE VIRTUALLY STAGED! Come and see this newly renovated high floor condo unit with City and Diamond Head views. This one bedroom unit is larger than most at over 700 sq. ft. of living space plus a large usable lanai. The home offers lots of natural light and cool breezes. New paint, light fixtures, vinyl plank flooring, vanity and re-glazed bath tub are just a few of the recent improvements. Amenities include a pool and meeting room. Ample guest parking is available on the 5th floor. Not pet-friendly. **Region:** Metro **Neighborhood:** Punahou **Condition:** Above Average, Excellent **Parking:** Assigned, Covered - 1, Guest, Secured Entry **Total Parking:** 1 **View:** City, Diamond Head, Mountain **Frontage:** Other **Pool:** **Zoning:** 13 - A-3 High Density Apartment **Sale Conditions:** None **Schools:** , , * [Request Showing](#), [Photos](#), [History](#), [Maps](#), [Deed](#), [Watch List](#), [Tax Info](#)

DOM = Days on Market, Occ. = Occupancy, FL = Floor Number