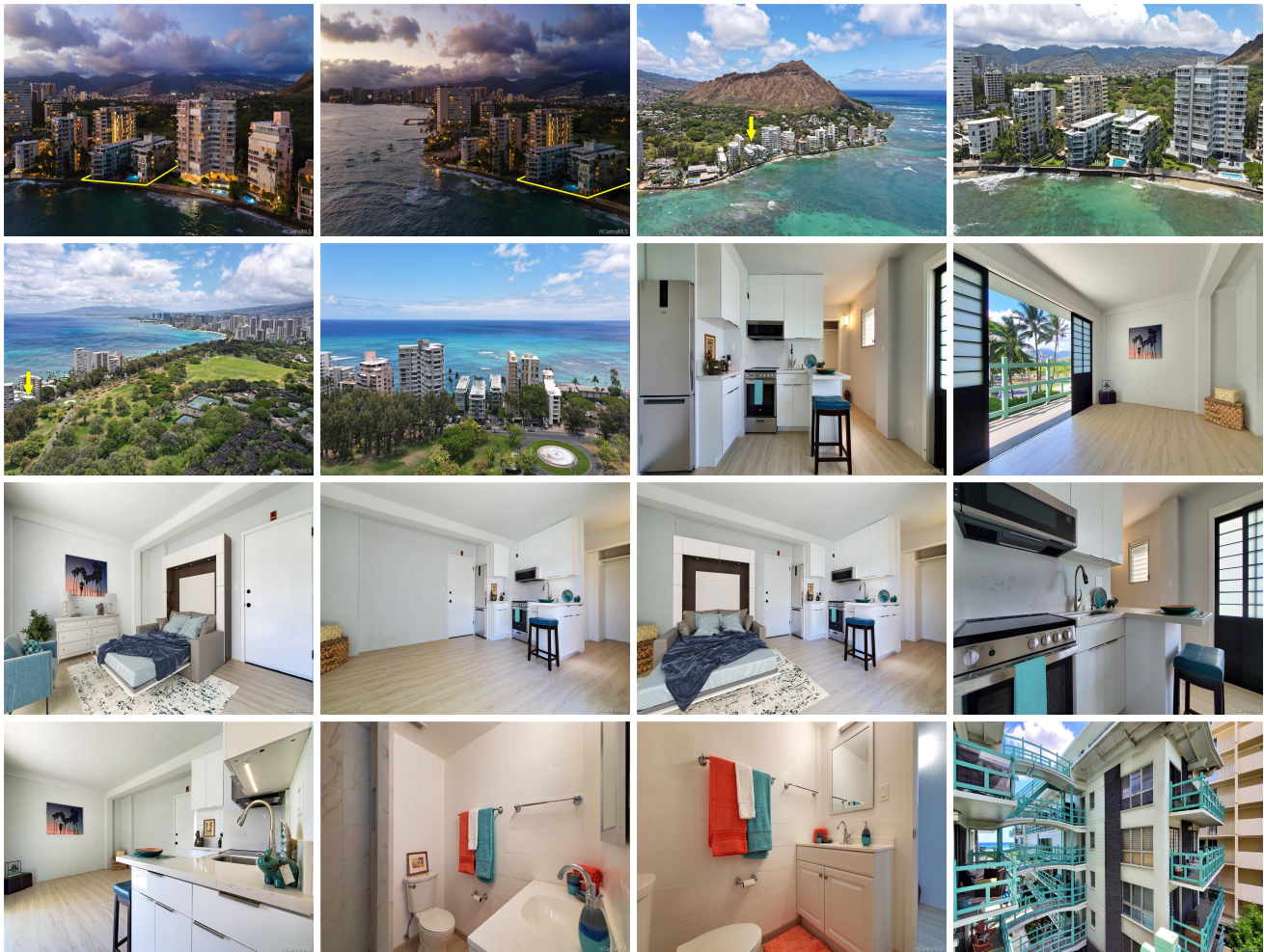
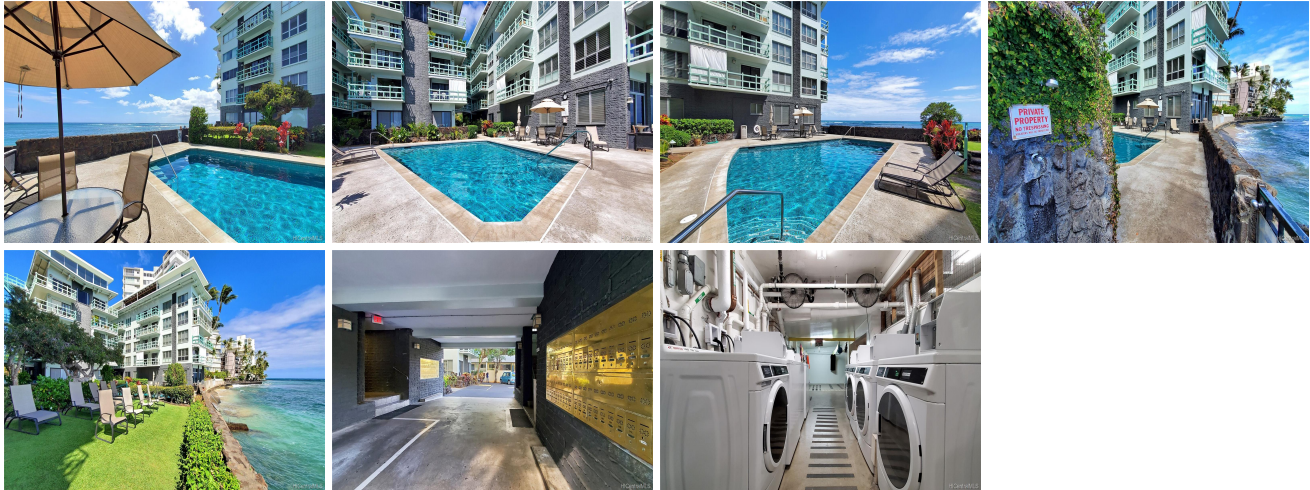


Diamond Head Ambassador B 2957 Kalakaua Avenue Unit 409, Honolulu 96815 * Diamond Head Ambassador B * \$339,900

| | | |
|---|--|-------------------------------------|
| Sold Price: \$325,000 | Sold Date: 05-03-2021 | Sold Ratio: 96% |
| Beds: 0 | MLS#: 202017109, FS | Year Built: 1959 |
| Bath: 1/0 | Status: Sold | Remodeled: 2020 |
| Living Sq. Ft.: 310 | List Date & DOM: 07-14-2020 & 234 | Total Parking: 0 |
| Land Sq. Ft.: 0 | Condition: Excellent | Assessed Value |
| Lanai Sq. Ft.: 0 | Ocean, Sandy Beach, Waterfront | Building: \$0 |
| Sq. Ft. Other: 0 | Tax/Year: \$110/2020 | Land: \$0 |
| Total Sq. Ft. 310 | Neighborhood: Diamond Head | Total: \$0 |
| Maint./Assoc. \$512 / \$0 | Flood Zone : Zone VE - Tool | Stories / CPR: One, 4-7 / No |
| Parking: None | Frontage: Ocean, Sandy Beach, Waterfront | View: Garden |
| Zoning : 12 - A-2 Medium Density Apartme | | |

Public Remarks: ASSESSMENT PAID IN FULL__Location, Location! Here is your chance to renovate & build an oceanfront island lifestyle w/ modern conveniences & historic charm. First on the Gold Coast, Diamond Head Ambassador is instantly recognized for its lava rock walls & turquoise Japanese bridges. This iconic studio offers stunning sunsets year-round from the lovely common garden area. Sunbathe on the lawn or dip in the newly remodeled pool. Direct beach & ocean access for swimming, surfing, snorkeling & more - right out the back gate. Tropical landscaped outdoor amenities w/ surfboard storage. This condo comes w/ large storage space in the basement. Situated across from Kapiolani Park & just yards from Outrigger Canoe Club & Elks Club, your personal slice of paradise awaits! **Sale Conditions:** Probate **Schools:** [Jefferson](#), [Washington](#), [Kaimuki](#) * [Request Showing](#), [Photos](#), [History](#), [Maps](#), [Deed](#), [Watch List](#), [Tax Info](#)





| Address | Price | Bd & Bth | Living / Avg. | Land Avg. | Lanai | Occ. | FL | DOM |
|--|---------------------------|----------|---------------|-------------|-------|------|----|-----|
| 2957 Kalakaua Avenue 409 | \$339,900 | 0 & 1/0 | 310 \$1,096 | 0 \$inf | 0 | 65% | 4 | 234 |

| Address | Tax Maint. Ass. | Assessed Land | Assessed Building | Assessed Total | Ratio | Year & Remodeled |
|--|---------------------|---------------|-------------------|----------------|-------|------------------|
| 2957 Kalakaua Avenue 409 | \$110 \$512 \$0 | \$0 | \$0 | \$0 | inf% | 1959 & 2020 |

| Address | Sold Price | Sold Date | Sold Ratio | Original Ratio | Sold Terms |
|--|------------|------------|------------|----------------|------------|
| 2957 Kalakaua Avenue 409 | \$325,000 | 05-03-2021 | 96% | 96% | Cash |

[2957 Kalakaua Avenue 409](#) - MLS#: [202017109](#) - ASSESSMENT PAID IN FULL _ Location, Location, Location! Here is your chance to renovate & build an oceanfront island lifestyle w/ modern conveniences & historic charm. First on the Gold Coast, Diamond Head Ambassador is instantly recognized for its lava rock walls & turquoise Japanese bridges. This iconic studio offers stunning sunsets year-round from the lovely common garden area. Sunbathe on the lawn or dip in the newly remodeled pool. Direct beach & ocean access for swimming, surfing, snorkeling & more - right out the back gate. Tropical landscaped outdoor amenities w/ surfboard storage. This condo comes w/ large storage space in the basement. Situated across from Kapiolani Park & just yards from Outrigger Canoe Club & Elks Club, your personal slice of paradise awaits!

Region: Diamond Head **Neighborhood:** Diamond Head **Condition:** Excellent **Parking:** None **Total Parking:** 0 **View:** Garden **Frontage:** Ocean,Sandy Beach,Waterfront **Pool:** **Zoning:** 12 - A-2 Medium Density Apartme **Sale Conditions:** Probate **Schools:** [Jefferson](#), [Washington](#), [Kaimuki](#) * [Request Showing](#), [Photos](#), [History](#), [Maps](#), [Deed](#), [Watch List](#), [Tax Info](#)

DOM = Days on Market, Occ. = Occupancy, FL = Floor Number