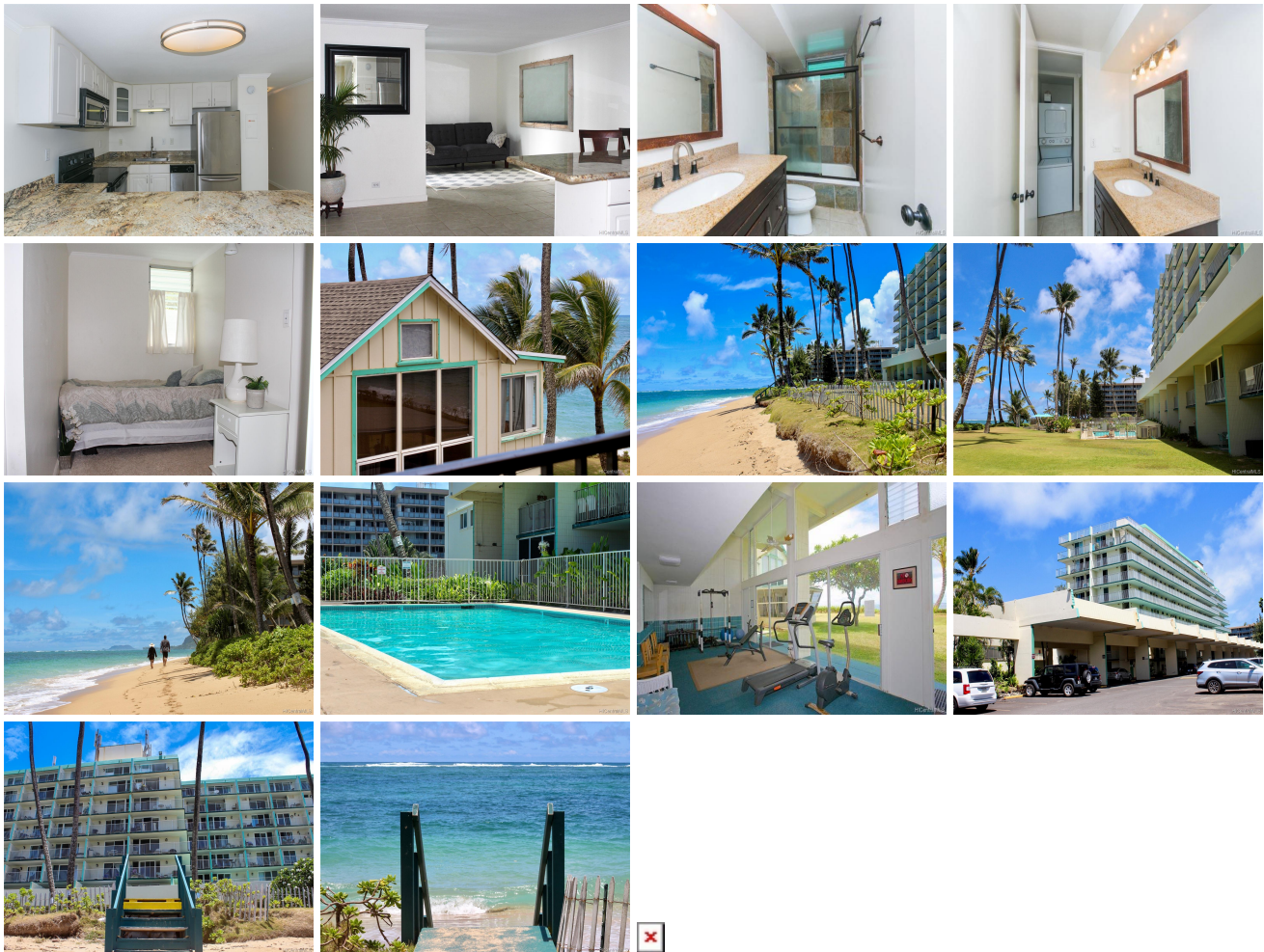


## **Pats at Punaluu 53-567 Kamehameha Highway Unit 303, Hauula 96717 \* Pats at Punaluu \***

**\$189,000**

Sold Price: \$189,000	Sold Date: 11-02-2020	Sold Ratio: 100%
Beds: <b>1</b>	MLS#: <b>202017625, FS</b>	Year Built: <b>1975</b>
Bath: <b>1/0</b>	Status: <b>Sold</b>	Remodeled: <b>2007</b>
Living Sq. Ft.: <b>524</b>	List Date & DOM: <b>07-20-2020 &amp; 52</b>	Total Parking: <b>1</b>
Land Sq. Ft.: <b>126,672</b>	Condition: <b>Above Average, Average</b>	<a href="#">Assessed Value</a>
Lanai Sq. Ft.: <b>150</b>	Frontage: <b>Ocean, Sandy Beach</b>	Building: <b>\$156,300</b>
Sq. Ft. Other: <b>0</b>	Tax/Year: <b>\$65/2020</b>	Land: <b>\$72,800</b>
Total Sq. Ft. <b>674</b>	Neighborhood: <b>Punaluu</b>	Total: <b>\$229,100</b>
Maint./Assoc. <b>\$694 / \$0</b>	<a href="#">Flood Zone</a> : <b>Zone AE - Tool</b>	Stories / CPR: <b>8-14 / No</b>
Parking: <b>Open - 1, Unassigned</b>	Frontage: <b>Ocean, Sandy Beach</b>	
<a href="#">Zoning</a> : <b>12 - A-2 Medium Density Apartme</b>	View: <b>Mountain, Ocean, Sunrise</b>	

**Public Remarks:** Here's your chance to own an ocean front condo in paradise! Fee simple 1 bedroom, 1 bathroom in Pats at Punaluu. Located at one of the nicest beaches on the island; you can enjoy swimming, kayaking, snorkeling & fishing just a few steps from your condo! Take a lovely stroll on the sandy beach, swim in the pool, or relax on the large grassy lawn. This is on the Windward side of Oahu (nice, cool & breezy) away from the hustle & bustle of downtown Honolulu. Close to Polynesian Cultural Center, Turtle Bay, and North Shore. Full kitchen renovated in '07 with a large granite counter top. Washer/dryer in the unit. It's a nice unit but it's priced to sell "As Is". Easy to show. Tenants just moved out. Please use 'Showing Time' as well text listor, Julie. **Sale Conditions:** None **Schools:** [Hauula](#), [Kahuku](#), [Kahuku](#) \* [Request Showing](#), [Photos](#), [History](#), [Maps](#), [Deed](#), [Watch List](#), [Tax Info](#)



Address	Price	Bd & Bth	Living / Avg.	Land   Avg.	Lanai	Occ.	FL	DOM
<a href="#">53-567 Kamehameha Highway 303</a>	<a href="#">\$189,000</a>	1 & 1/0	524   \$361	126,672   \$1	150	42%	3	52

Address	Tax   Maint.   Ass.	Assessed Land	Assessed Building	Assessed Total	Ratio	Year & Remodeled
<a href="#">53-567 Kamehameha Highway 303</a>	\$65   \$694   \$0	\$72,800	\$156,300	\$229,100	82%	1975 & 2007

Address	Sold Price	Sold Date	Sold Ratio	Original Ratio	Sold Terms
<a href="#">53-567 Kamehameha Highway 303</a>	\$189,000	11-02-2020	100%	100%	Conventional

[53-567 Kamehameha Highway 303](#) - MLS#: [202017625](#) - Here's your chance to own an ocean front condo in paradise! Fee simple 1 bedroom, 1 bathroom in Pats at Punaluu. Located at one of the nicest beaches on the island; you can enjoy swimming, kayaking, snorkeling & fishing just a few steps from your condo! Take a lovely stroll on the sandy beach, swim in the pool, or relax on the large grassy lawn. This is on the Windward side of Oahu (nice, cool & breezy) away from the hustle & bustle of downtown Honolulu. Close to Polynesian Cultural Center, Turtle Bay, and North Shore. Full kitchen renovated in '07 with a large granite counter top. Washer/dryer in the unit. It's a nice unit but it's priced to sell "As Is". Easy to show. Tenants just moved out. Please use 'Showing Time' as well text listor, Julie. **Region:** Kaneohe **Neighborhood:** Punaluu **Condition:** Above Average, Average **Parking:** Open - 1, Unassigned **Total Parking:** 1 **View:** Mountain, Ocean, Sunrise **Frontage:** Ocean,Sandy Beach **Pool:** **Zoning:** 12 - A-2 Medium Density Apartme **Sale Conditions:** None **Schools:** [Hauula](#), [Kahuku](#), [Kahuku](#) \* [Request Showing](#), [Photos](#), [History](#), [Maps](#), [Deed](#), [Watch List](#), [Tax Info](#)

DOM = Days on Market, Occ. = Occupancy, FL = Floor Number