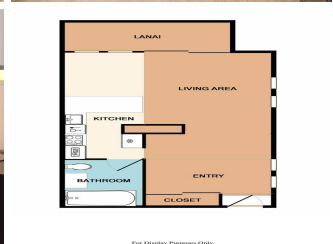
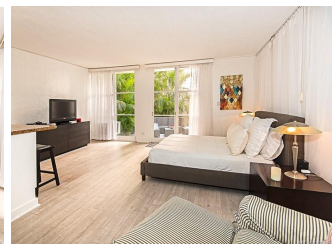
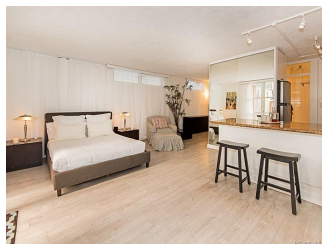


**2987 Kalakaua 2987 Kalakaua Avenue Unit 102, Honolulu 96815 \* 2987 Kalakaua \***

**\$559,000 \* Originally \$599,000**

Sold Price: \$509,000	Sold Date: 10-09-2020	Sold Ratio: 91%
Beds: <b>1</b>	MLS#: <b>202018068, FS</b>	Year Built: <b>1953</b>
Bath: <b>1/0</b>	Status: <b>Sold</b>	Remodeled: <b>2015</b>
Living Sq. Ft.: <b>616</b>	List Date & DOM: <b>07-27-2020 &amp; 20</b>	Total Parking: <b>0</b>
Land Sq. Ft.: <b>15,377</b>	Condition: <b>Above Average</b>	<a href="#">Assessed Value</a>
Lanai Sq. Ft.: <b>205</b>	Frontage: <b>Ocean, Other</b>	Building: <b>\$296,600</b>
Sq. Ft. Other: <b>0</b>	Tax/Year: <b>\$152/2019</b>	Land: <b>\$122,700</b>
Total Sq. Ft. <b>821</b>	Neighborhood: <b>Diamond Head</b>	Total: <b>\$519,300</b>
Maint./Assoc. <b>\$516 / \$0</b>	<a href="#">Flood Zone</a> : <b>Zone AE - Tool</b>	Stories / CPR: <b>One / No</b>
Parking: <b>None, Street</b>	Frontage: <b>Ocean, Other</b>	
<a href="#">Zoning</a> : <b>12 - A-2 Medium Density Apartme</b>	View: <b>Garden</b>	

**Public Remarks:** \*\* Back Up Offers now accepted \*\* VA Approved Building according to lenders. LOWEST PRICED FEE SIMPLE CONDO On the Gold Coast! (Not a Coop like Tropic Seas, DH Ambassador & Coral Strand). 821 Total Square Feet. Building is oceanfront in the foothills of Diamond Head with security, low maintenance fee and direct access to swimming and surfing. Extra large open floor plan with UNIQUE PRIVATE PATIO LANAI FOR THIS UNIT ONLY. Also includes a board approved AIR CONDITIONER. Features include granite counter tops, stainless steel appliances, air-conditioning, laminate wood flooring. Fee simple condo means best financing options are available unlike the coops in the area. This unit does not have a parking stall but there is plenty of parking at Kapiolani Park across the street. **Sale Conditions:** None **Schools:** , , \* [Request Showing](#), [Photos](#), [History](#), [Maps](#), [Deed](#), [Watch List](#), [Tax Info](#)



For Multiple Properties Photo



Address	Price	Bd & Bth	Living / Avg.	Land   Avg.	Lanai	Occ.	FL	DOM
<a href="#">2987 Kalakaua Avenue 102</a>	<b>\$559,000</b>	1 & 1/0	616   \$907	15,377   \$36	205	1%	1	20

Address	Tax   Maint.   Ass.	Assessed Land	Assessed Building	Assessed Total	Ratio	Year & Remodeled
<a href="#">2987 Kalakaua Avenue 102</a>	\$152   \$516   \$0	\$122,700	\$296,600	\$519,300	108%	1953 & 2015

Address	Sold Price	Sold Date	Sold Ratio	Original Ratio	Sold Terms
<a href="#">2987 Kalakaua Avenue 102</a>	\$509,000	10-09-2020	91%	85%	VA

[2987 Kalakaua Avenue 102](#) - MLS#: [202018068](#) - Original price was \$599,000 - \*\* Back Up Offers now accepted \*\* VA Approved Building according to lenders. LOWEST PRICED FEE SIMPLE CONDO On the Gold Coast! (Not a Coop like Tropic Seas, DH Ambassador & Coral Strand). 821 Total Square Feet. Building is oceanfront in the foothills of Diamond Head with security, low maintenance fee and direct access to swimming and surfing. Extra large open floor plan with UNIQUE PRIVATE PATIO LANAI FOR THIS UNIT ONLY. Also includes a board approved AIR CONDITIONER. Features include granite counter tops, stainless steel appliances, air-conditioning, laminate wood flooring. Fee simple condo means best financing options are available unlike the coops in the area. This unit does not have a parking stall but there is plenty of parking at Kapiolani Park across the street. **Region:** Diamond Head **Neighborhood:** Diamond Head **Condition:** Above Average **Parking:** None, Street **Total Parking:** 0 **View:** Garden **Frontage:** Ocean, Other **Pool:** Zoning: 12 - A-2 Medium Density Apartme **Sale Conditions:** None **Schools:** , , \* [Request Showing](#), [Photos](#), [History](#), [Maps](#), [Deed](#), [Watch List](#), [Tax Info](#)

DOM = Days on Market, Occ. = Occupancy, FL = Floor Number