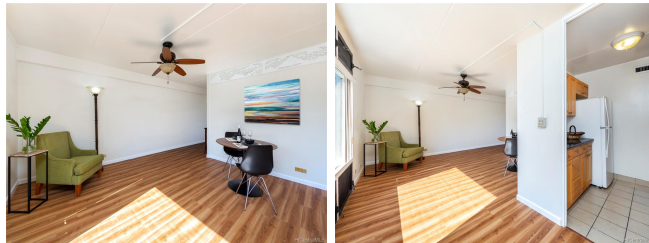


## **Sandalwood 910 Ahana Street Unit 1002, Honolulu 96814 \* Sandalwood \* \$412,000**

Beds: <b>2</b>	MLS#: <b>202018112, FS</b>	Year Built: <b>1965</b>
Bath: <b>1/0</b>	Status: <b>Expired</b>	Remodeled:
Living Sq. Ft.: <b>780</b>	List Date & DOM: <b>07-27-2020 &amp; 361</b>	Total Parking: <b>1</b>
Land Sq. Ft.: <b>41,818</b>	Condition: <b>Average</b>	<a href="#">Assessed Value</a>
Lanai Sq. Ft.: <b>0</b>	Frontage: <b>Other</b>	Building: <b>\$255,700</b>
Sq. Ft. Other: <b>0</b>	Tax/Year: <b>\$116/2020</b>	Land: <b>\$112,500</b>
Total Sq. Ft. <b>780</b>	Neighborhood: <b>Pawaa</b>	Total: <b>\$368,200</b>
Maint./Assoc. <b>\$846 / \$0</b>	<a href="#">Flood Zone</a> : <b>Zone X - Tool</b>	Stories / CPR: <b>8-14 / No</b>
Parking: <b>Assigned, Covered - 1, Garage, Secured Entry, Street</b>	Frontage: <b>Other</b>	
<a href="#">Zoning</a> : <b>13 - A-3 High Density Apartment</b>	View: <b>City</b>	

**Public Remarks:** Superb opportunity to capture this centrally located, nicely-kept Honolulu condominium. Refreshed and updated with new paint and luxury vinyl flooring, this well designed 2 bedroom, 1 bath, 780 sq.ft. floor plan adds privacy by keeping the bedrooms around the corner from the main living area. An extra large closet provides plenty of storage options. Located just a few short blocks from Ala Moana Center, Target, Wal Mart, Don Quixote, and many nearby restaurants, this is the ultra-convenient town lifestyle you've been looking for! **Sale Conditions:** None **Schools:** [Kaahumanu](#), [Washington](#), [Mckinley](#) \* [Request Showing](#), [Photos](#), [History](#), [Maps](#), [Deed](#), [Watch List](#), [Tax Info](#)



Address	Price	Bd & Bth	Living / Avg.	Land   Avg.	Lanai	Occ.	FL	DOM
<a href="#">910 Ahana Street 1002</a>	<a href="#">\$412,000</a>	2 & 1/0	780   \$528	41,818   \$10	0	60%	10	361

Address	Tax   Maint.   Ass.	Assessed Land	Assessed Building	Assessed Total	Ratio	Year & Remodeled
<a href="#">910 Ahana Street 1002</a>	\$116   \$846   \$0	\$112,500	\$255,700	\$368,200	112%	1965 & NA

[910 Ahana Street 1002](#) - MLS#: [202018112](#) - Superb opportunity to capture this centrally located, nicely-kept Honolulu condominium. Refreshed and updated with new paint and luxury vinyl flooring, this well designed 2 bedroom, 1 bath, 780 sq.ft. floor plan adds privacy by keeping the bedrooms around the corner from the main living area. An extra large closet provides plenty of storage options. Located just a few short blocks from Ala Moana Center, Target, Wal Mart, Don Quixote, and many nearby restaurants, this is the ultra-convenient town lifestyle you've been looking for! **Region:** Metro **Neighborhood:** Pawaa **Condition:** Average **Parking:** Assigned, Covered - 1, Garage, Secured Entry, Street **Total Parking:** 1 **View:** City **Frontage:** Other **Pool:** **Zoning:** 13 - A-3 High Density Apartment **Sale Conditions:** None **Schools:** [Kaahumanu](#), [Washington](#), [Mckinley](#) \* [Request Showing](#), [Photos](#), [History](#), [Maps](#), [Deed](#), [Watch List](#), [Tax Info](#)

DOM = Days on Market, Occ. = Occupancy, FL = Floor Number