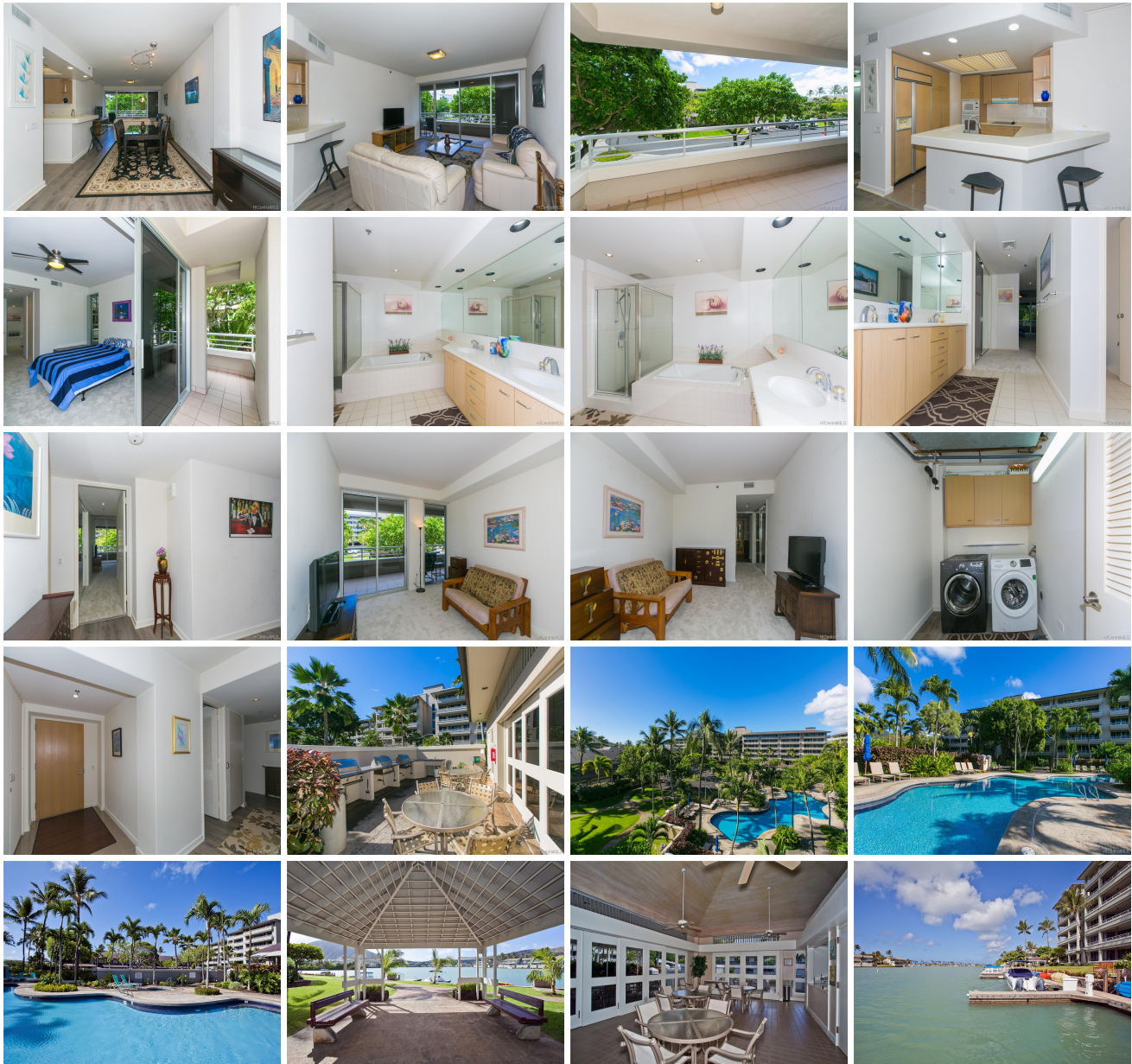


**Kalele Kai 1 Keahole Place Unit 1218, Honolulu 96825 \* Kalele Kai \* \$749,000 \* Originally \$758,000**

Sold Price: \$749,000	Sold Date: 01-21-2021	Sold Ratio: 100%
Beds: <b>2</b>	MLS#: <b><u>202018599</u></b> , FS	Year Built: <b>1993</b>
Bath: <b>2/0</b>	Status: <b>Sold</b>	Remodeled:
Living Sq. Ft.: <b>1,427</b>	List Date & DOM: <b>09-24-2020 &amp; 70</b>	Total Parking: <b>2</b>
Land Sq. Ft.: <b>373,091</b>	Condition: <b>Excellent</b>	<a href="#">Assessed Value</a>
Lanai Sq. Ft.: <b>373</b>	Frontage: <b>Marina</b>	Building: <b>\$545,700</b>
Sq. Ft. Other: <b>0</b>	Tax/Yr: <b>\$228/2020</b>	Land: <b>\$235,700</b>
Total Sq. Ft. <b>1,800</b>	Neighborhood: <b>West Marina</b>	Total: <b>\$781,400</b>
Maint./Assoc. <b>\$865 / \$0</b>	<a href="#">Flood Zone</a> : <b>Zone D - Tool</b>	Stories / CPR: / <b>No</b>
Parking: <b>Assigned, Covered - 2, Guest, Secured Entry</b>	Frontage: <b>Marina</b>	
<a href="#">Zoning</a> : <b>12 - A-2 Medium Density Apartme</b>	View: <b>Mountain</b>	

**Public Remarks:** Welcome to Kalele Kai. This prestigious marina front, gated community has resort-like amenities including pool, hot tub, BBQ, walking path and security. Shopping, stores and restaurants are within walking distance. This large, upscale two-bedroom condo has a beautiful tree-top view. This unit is located in building 1 facing the interior of the complex (not roadside), and being a corner-end unit, you gain an extended wrap-around (2 sides) lanai. The two covered parking stalls are conveniently located next to each other. In excellent condition and with new flooring, this condo is ready for you to enjoy. If available, deeded boat docks may be purchased. **Sale Conditions:** None **Schools:** [Hahaione](#), [Niu Valley](#), [Kaiser](#) \* [Request Showing](#), [Photos](#), [History](#), [Maps](#), [Deed](#), [Watch List](#), [Tax Info](#)





Address	Price	Bd & Bth	Living / Avg.	Land   Avg.	Lanai	Occ.	FL	DOM
<a href="#">1 Keahole Place 1218</a>	<b>\$749,000</b>	2 & 2/0	1,427   \$525	373,091   \$2	373	59%	2	70

Address	Tax   Maint.   Ass.	Assessed Land	Assessed Building	Assessed Total	Ratio	Year & Remodeled
<a href="#">1 Keahole Place 1218</a>	\$228   \$865   \$0	\$235,700	\$545,700	\$781,400	96%	1993 & NA

Address	Sold Price	Sold Date	Sold Ratio	Original Ratio	Sold Terms
<a href="#">1 Keahole Place 1218</a>	\$749,000	01-21-2021	100%	99%	Conventional

[1 Keahole Place 1218](#) - MLS#: [202018599](#) - Original price was \$758,000 - Welcome to Kalele Kai. This prestigious marina front, gated community has resort-like amenities including pool, hot tub, BBQ, walking path and security. Shopping, stores and restaurants are within walking distance. This large, upscale two-bedroom condo has a beautiful tree-top view. This unit is located in building 1 facing the interior of the complex (not roadside), and being a corner-end unit, you gain an extended wrap-around (2 sides) lanai. The two covered parking stalls are conveniently located next to each other. In excellent condition and with new flooring, this condo is ready for you to enjoy. If available, deeded boat docks may be purchased.  
**Region:** Hawaii Kai **Neighborhood:** West Marina **Condition:** Excellent **Parking:** Assigned, Covered - 2, Guest, Secured Entry **Total Parking:** 2 **View:** Mountain **Frontage:** Marina **Pool:** **Zoning:** 12 - A-2 Medium Density Apartme **Sale Conditions:** None **Schools:** [Hahaione](#), [Niu Valley](#), [Kaiser](#) \* [Request Showing](#), [Photos](#), [History](#), [Maps](#), [Deed](#), [Watch List](#), [Tax Info](#)

DOM = Days on Market, Occ. = Occupancy, FL = Floor Number